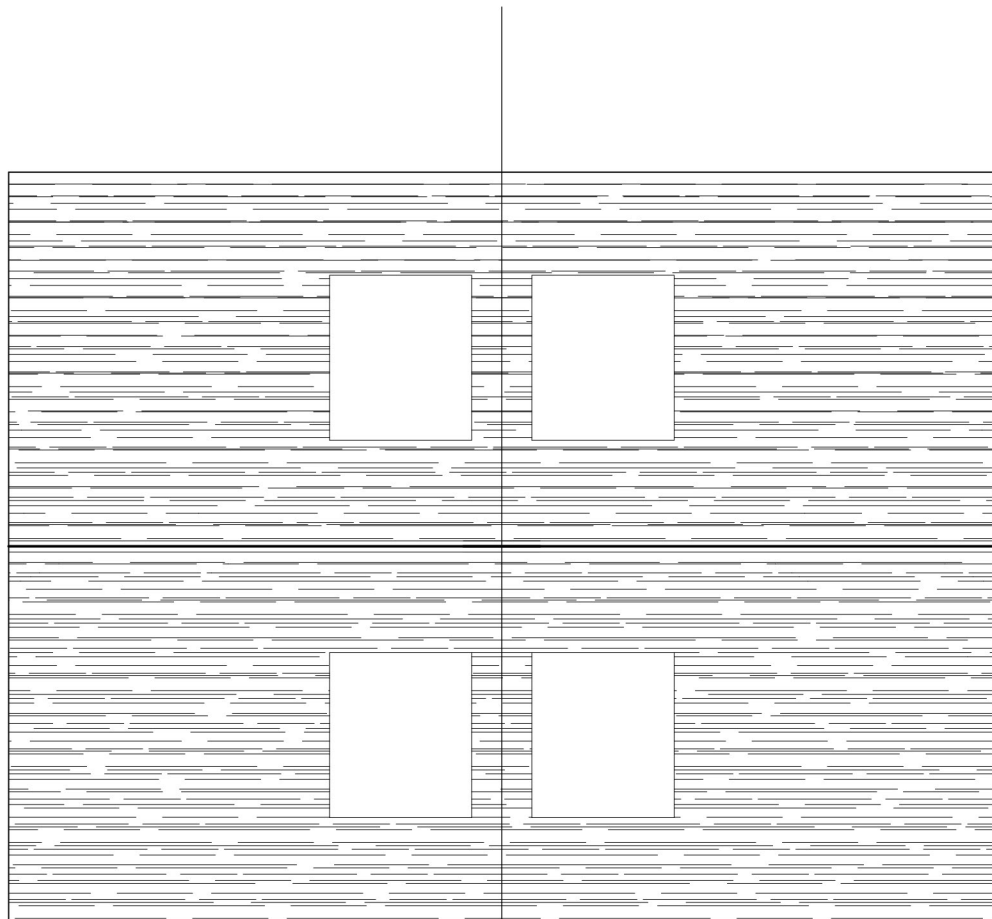


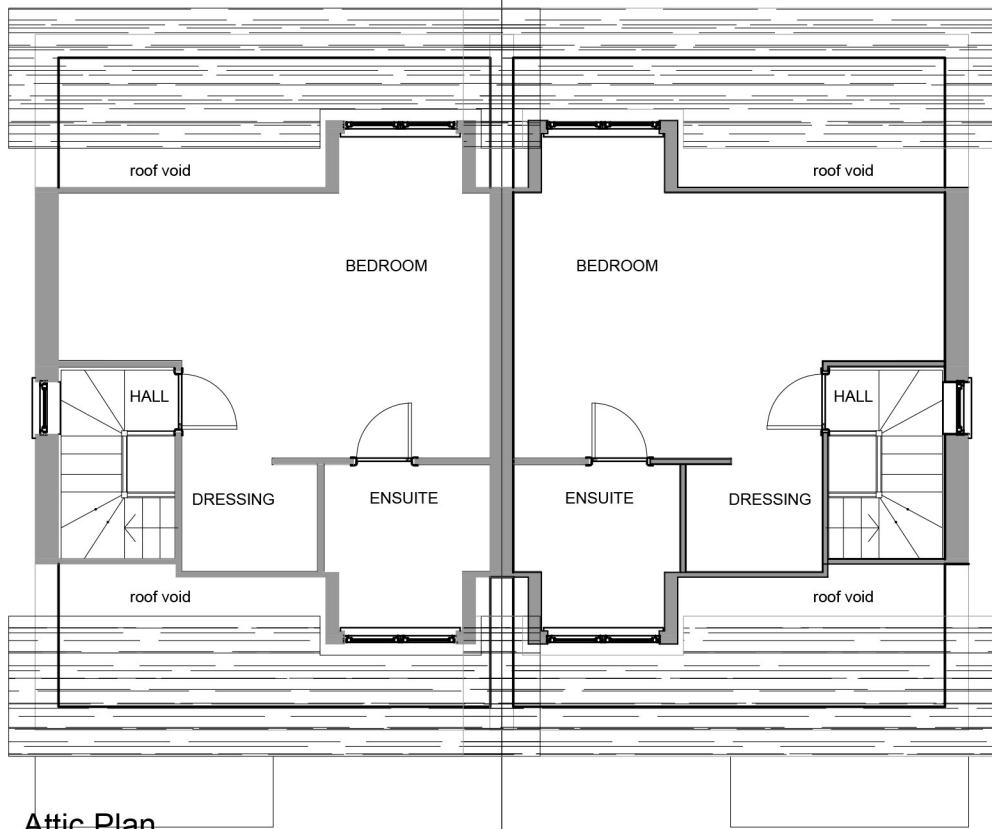
**General Notes:**

Do not scale from this drawing: refer only to stated dimensions. If in doubt request clarification from this office. This drawing, and associated copyright, is the property of Convery Prently Architects Ltd.

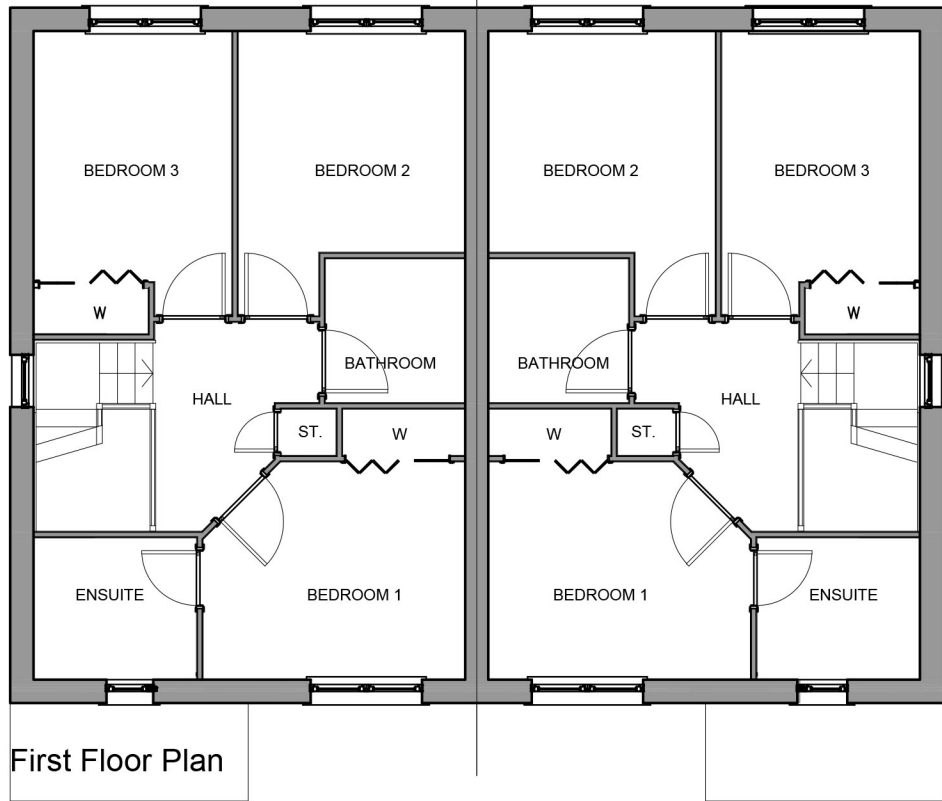
revision	date	note
-	20/03/20	Revision Notes



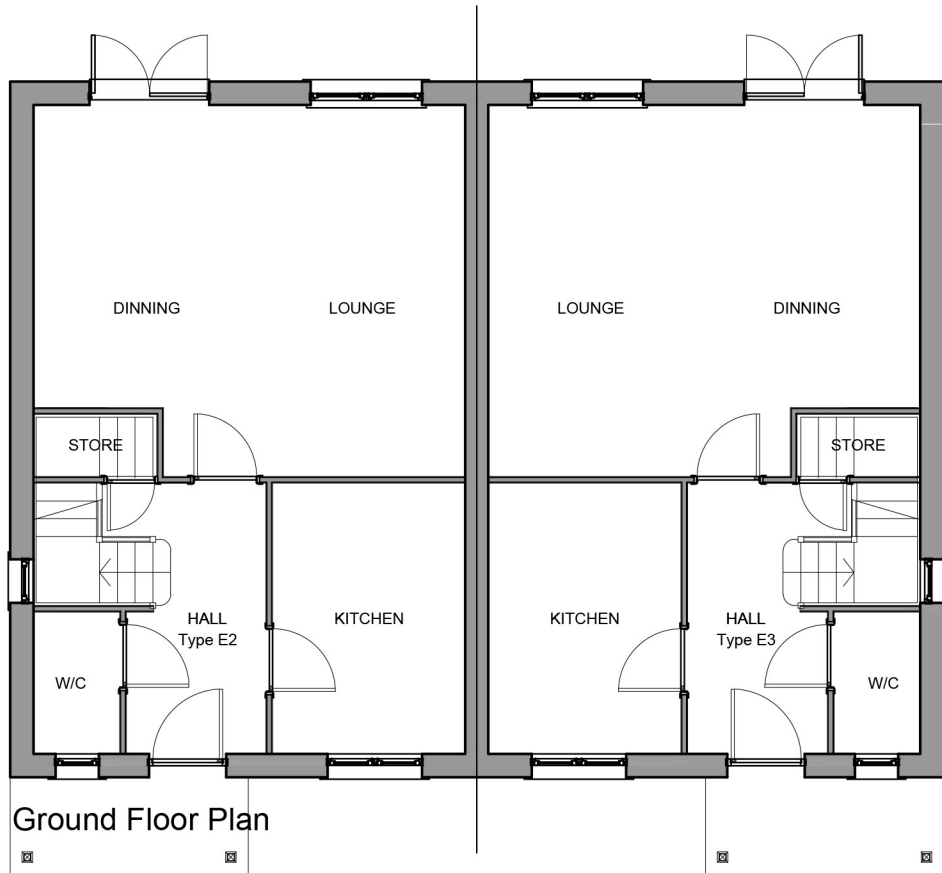
Roof Plan



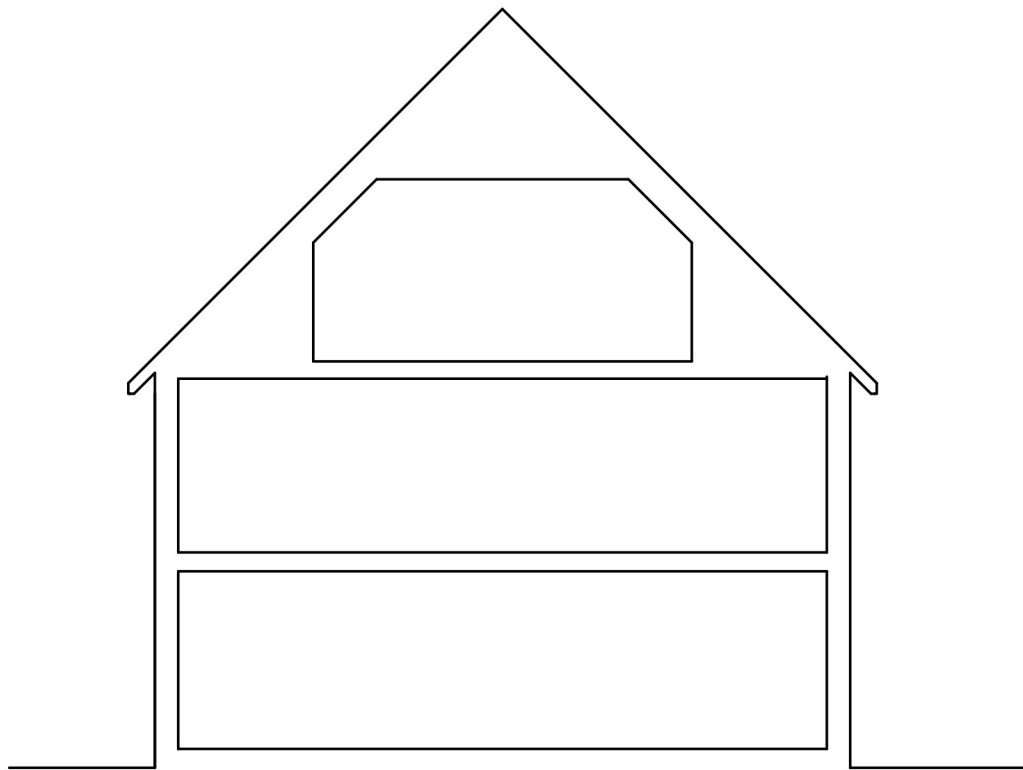
Attic Plan



First Floor Plan



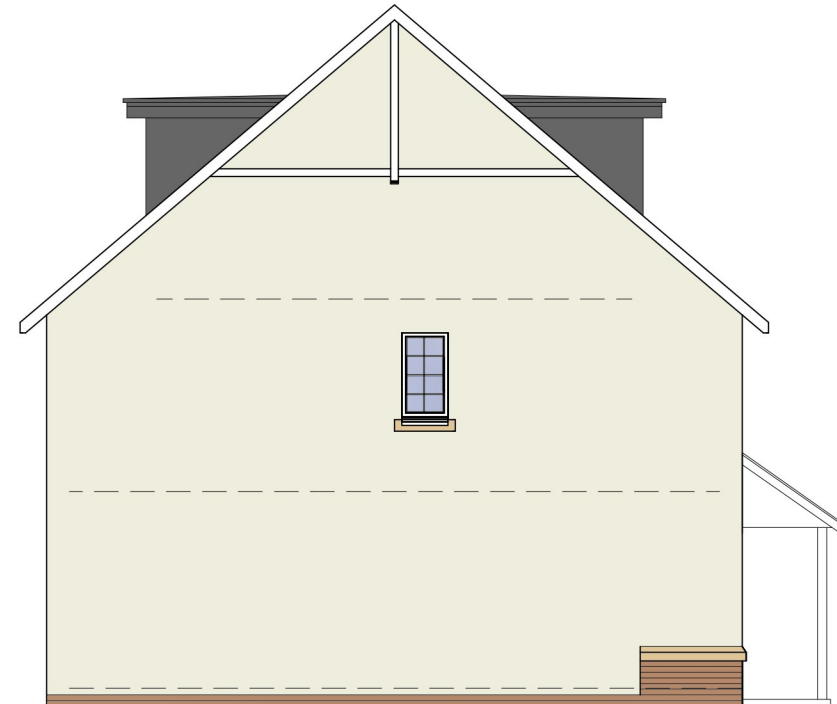
Ground Floor Plan



Typical Section



Front Elevation

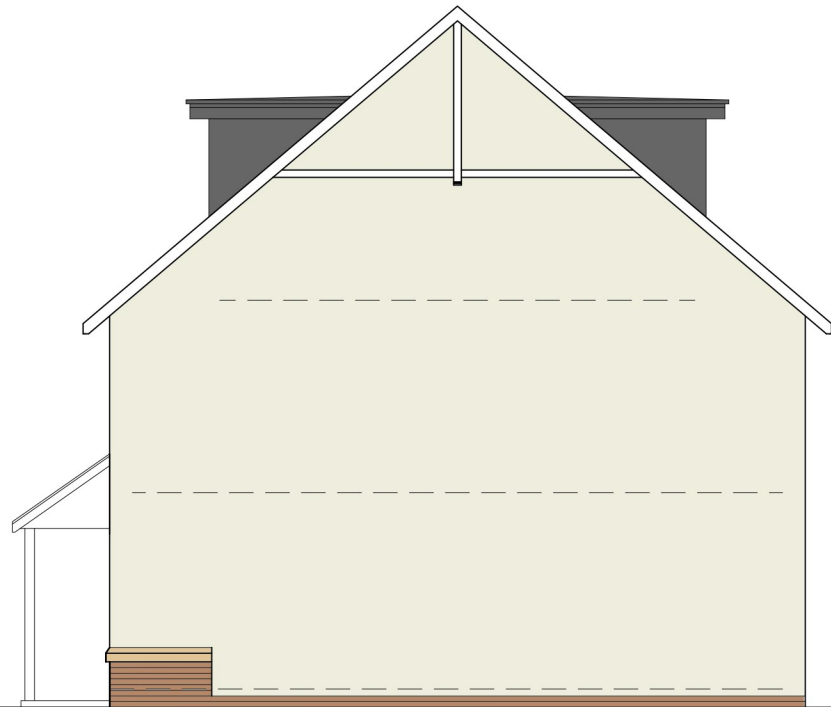


Gable 1 Elevation



Rear Elevation

Rear Elevation



Gable 2 Elevation

**Location**

Type E2 occurs as drawn at Plots 34,35

**Area**

Type E2 120m² GIFA

**External Materials**

**Walls:-**

- ashlar faced reconstituted facing stone features, colour buff
- brick infill panels and base course, colour buff
- smooth thru coloured render system generally, colour ivory
- painted timber fascias and soffits, white

**Windows & Doors:-**

- double glazed uPVC framed windows, frame colour white
- double glazed uPVC framed doors, frame colour white

**Roof:-**

- Marley Modern Duo interlocking concrete Roof tile, colour anthracite
- lead verge flashings generally
- uPVC rainwater goods, colour Black

**Boundaries:- (refer to landscape drawings)**

- generally slatted timber fencing
- box hedging
- shrub belts
- low level brick walling



building today | defining tomorrow

**CONVERY PRENTLY ARCHITECTS**

20 High Craighall Road, Glasgow, G4 9LD  
www.cparth.co.uk 0141 227 1718

**CLIENT** APSIS Homes

**PROJECT** RESIDENTIAL DEVELOPMENT LAND WEST OF TOFTCOMBS CRES STONEHOUSE

**DRAWING** Proposed House Type E2, Plans, Sections & Elevations shown

PAPER SIZE	SCALE	DATE
A1	1/100	April 15
DRAWING NUMBER	REVISION	
309-107	-	

