

## Have your say

Due to current constraints on organising public events, we are hosting two virtual exhibitions where you can find detailed information about our proposals and have the opportunity to speak to members of the project team via scheduled live chat sessions. The virtual exhibitions will be hosted on our dedicated project website [www.overwooderf.com](http://www.overwooderf.com).

Before we submit a planning application to South Lanarkshire Council, we want to know your views on our proposals\*. We welcome your feedback, which where possible will help to shape the application that is submitted. The deadline for submitting your comments is **5pm on Thursday 22nd April 2021**.

The first virtual exhibition will be online from Thursday 11th February 2021, with two live chat events taking place on:

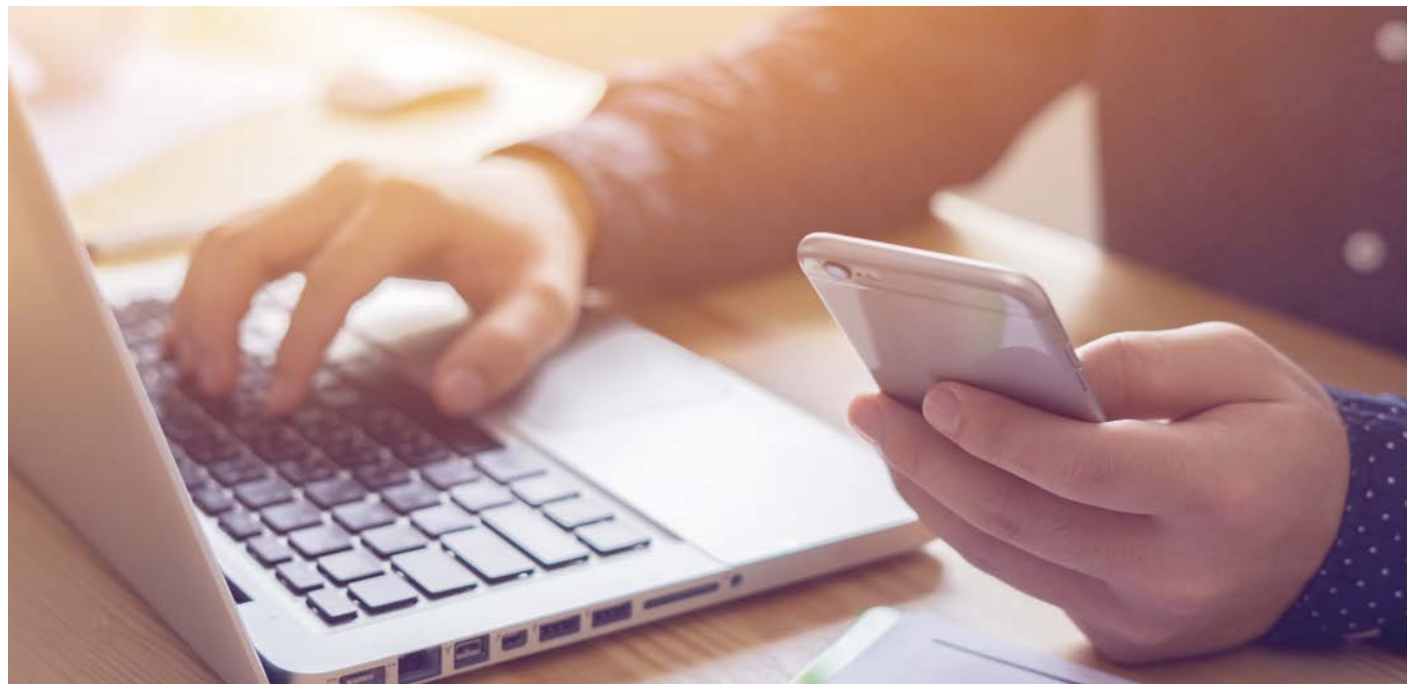
- Thursday 18th February 2021 - 2pm to 6pm
- Thursday 25th February 2021 - 4pm to 8pm

The second virtual exhibition (the first virtual exhibition will also remain live) will be online from Thursday 1st April 2021, with two live chat events taking place on:

- Thursday 8th April 2021 - 2pm to 6pm
- Thursday 15th April 2021 - 4pm to 8pm

You can also provide feedback or request hard copies of the consultation materials by calling **0800 098 8157** (between 9am and 5:30pm) or by email at [enquiries@overwooderf.com](mailto:enquiries@overwooderf.com).

\*Any comments made to the prospective applicant are not representations to the planning authority. There will be an opportunity to make representations to the planning authority once a planning application has been submitted.



# Overwood Energy Recovery Facility



Artist's impression of Overwood ERF

## Our plans

Viridor is preparing a planning application for the construction of an Energy Recovery Facility (ERF) at Overwood Farm, on the Dovesdale Complex, 2km south-east of the village of Stonehouse in South Lanarkshire.

The proposed facility will transform 330,000 tonnes per annum of locally sourced non-recyclable waste into energy and other reusable by-products. This waste would otherwise be sent to landfill or exported abroad. In 2019, Scotland sent 1.4m tonnes of non-recyclable waste to landfill. If the infrastructure existed, this waste could be sent to an ERF and turned into energy.

The Overwood ERF would generate 34.1MW of electricity of which 30.7MW would be exported to the national grid. This is enough electricity to power around 82,200 homes (over half the homes in South Lanarkshire).

An application for a similar facility at Dovesdale, the Carlisle Road Resource Recovery Facility (CRRRF), brought forward by Scotgen, was approved by South Lanarkshire Council in 2011. This planning permission will be revoked should Viridor obtain planning permission for the Overwood ERF.

## Virtual Public Exhibition

In light of the COVID-19 restrictions and guidance from the Scottish Government, we are unable to hold public events. However, as part of our community consultation programme, we will be hosting two virtual exhibitions to provide detailed information about the proposals. Visitors to the virtual exhibition will be able to record their views on our proposal via an online feedback form.

More information can be found about our proposals on the project website at [www.overwooderf.com](http://www.overwooderf.com). The virtual exhibition will also be hosted on this website and will be live from **Thursday 11th February 2021**.

Additionally, visitors will have an opportunity to talk directly to members of the project team via our scheduled live chat sessions.

You can also provide feedback or request hard copies of the consultation materials by calling **0800 098 8157** (between 9am and 5:30pm) or by email at [enquiries@overwooderf.com](mailto:enquiries@overwooderf.com).

We hope you are able to join us at the virtual exhibition to learn more about our proposal for South Lanarkshire. Please see page four for details of our virtual exhibitions and live chat sessions.

## Next steps

The key next step after our public consultation will be to prepare the planning application which takes on board comments from the local community to inform the design and assessment process.

All comments and feedback will be included in our pre-application consultation (PAC) report. This will be submitted to South Lanarkshire Council as part of the planning application in Spring/Summer 2021.

Once the application has been submitted there will be a period of consideration and consultation by South Lanarkshire Council and the Scottish Environment Protection Agency, before any decision is made.



## Site Location

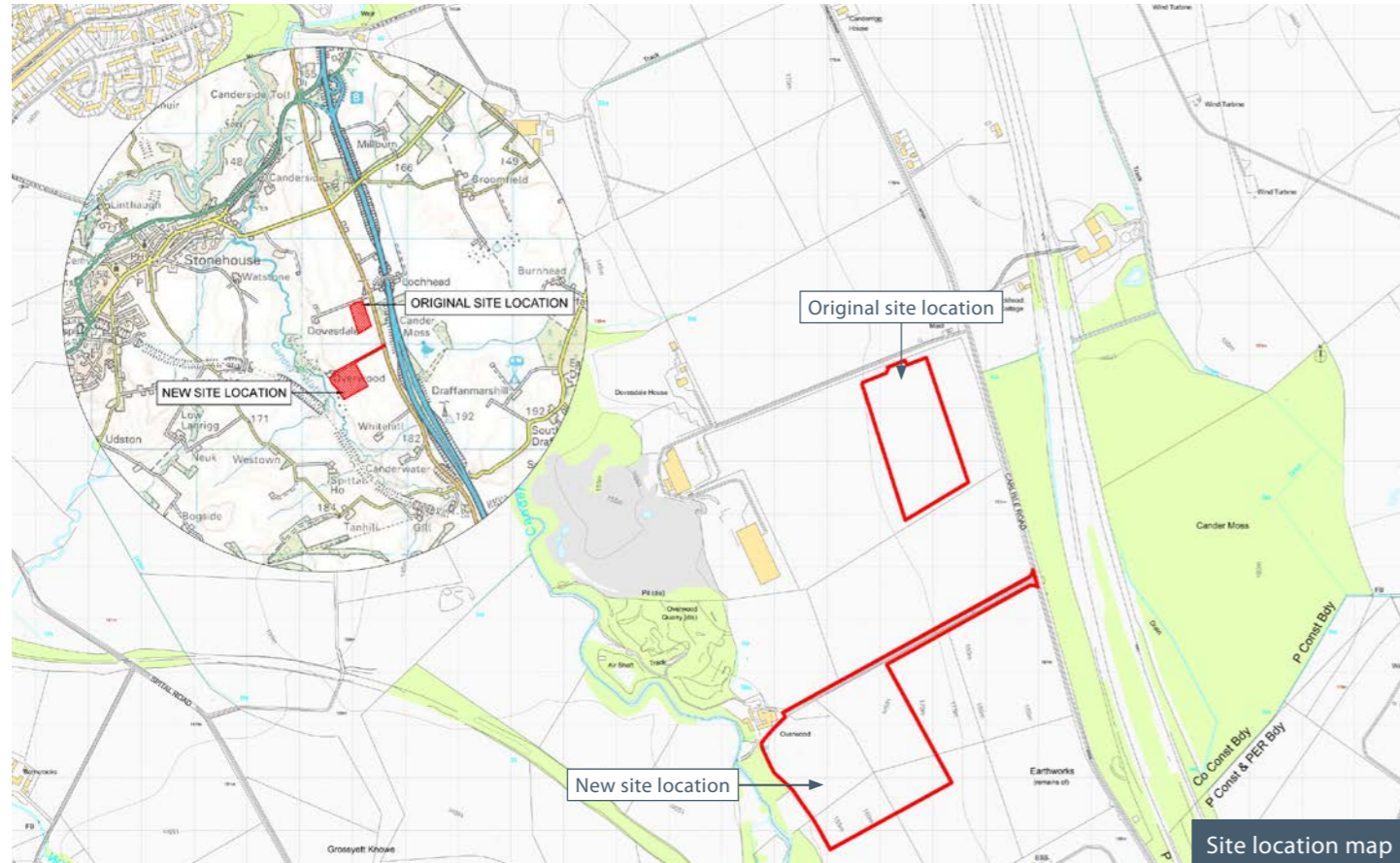
The Overwood ERF site will be located in South Lanarkshire, approximately 2 km south-east of the village of Stonehouse, situated near the B7078 (Carlisle Road).

The application site comprises circa 7 hectares of pastoral agricultural land. It forms part of the Dovesdale Complex, alongside William Hamilton & Sons who operate a recycling and inert landfill facility on the adjoining site.

The Overwood ERF lies 500m from the Scotgen CRRRF which currently has an extant consent. This consent will be revoked, if the Overwood ERF gets planning permission.

The facility will create around 500 job opportunities during construction and up-to 55 permanent full-time jobs when operational. As part of this, Viridor will create apprenticeship schemes and will encourage local firms to tender for subcontract packages during the three-year build programme.

There will also be contracts available for ancillary services and maintenance works during the operational period of the ERF.



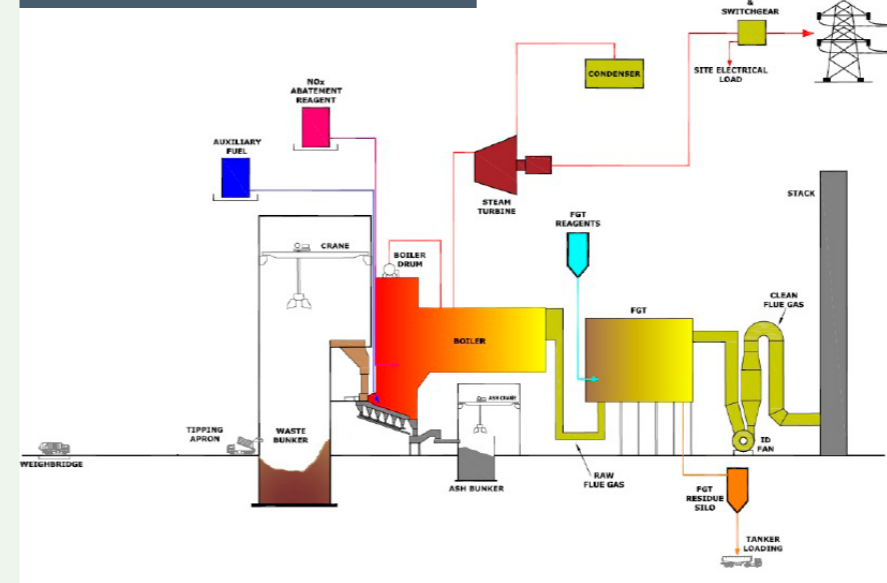
## How does it work?

The Overwood Energy Recovery Facility will use moving grate technology to transform non-recyclable waste into energy and other reusable by-products.

The process involves non-recyclable waste being treated at high temperatures in carefully controlled conditions to create high pressure steam. This steam then rotates turbines at the facility to generate electricity that can be exported to the national grid.

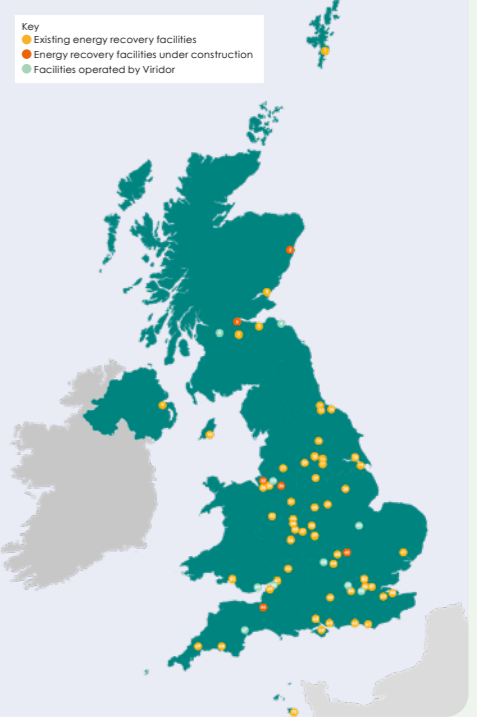
The process creates a number of useful by-products such as heat and electricity that can be used in nearby homes and businesses (including direct connections for local businesses, where possible); and ash and metals, which can be recycled for use in construction and other products. The creation and use of these by-products mean that 100 percent of the waste treated by the ERF can be diverted away from landfill.

How an Energy Recovery Facility works



## ERF's in the UK

This technology is safe, environmentally sustainable and reliable and is tried and tested throughout the world. Over 1,000 similar plants operate around the globe, the majority of which use mass-burn moving grate technology, including Viridor's existing ERF at Dunbar in East Lothian.



## Scotland's targets

Our plans are designed to help Scotland deliver its ambitious climate change and circular economy targets.

The Scottish Government will place a ban on landfilling biodegradable waste by December 2025. This date was originally scheduled for January 2021, but has been put back, in part, due to the lack of waste treatment infrastructure (including energy recovery facilities) available to meet the ban.

In 2019, Scotland sent 1.4million tonnes of non-recyclable waste to landfill that could have been sent to an ERF and turned into energy.

## Key benefits

The proposed development includes the following:



Process up to 330,000 tonnes of non-recyclable waste per annum that would otherwise be sent to landfill



Creating enough electricity to power around 82,200 homes



Contributing at least £1million in business rates to South Lanarkshire Council every year



Supporting Scottish Government's climate change and circular economy objectives



Supporting up-to 500 jobs during the construction of the ERF



Creation of up-to 55 permanent full-time jobs when operational

## Managing Air Quality and Emissions

The type of technology installed will ensure that the level of emissions fall within guidelines stipulated by the Scottish Environment Protection Agency (SEPA) and will also meet air quality standards set by South Lanarkshire Council.

The gases created in the ERF are cleaned using highly sophisticated technology before being released. All facilities using ERF technology must comply with strict emissions standards, which are designed to protect public health.

SEPA will monitor emissions to ensure they remain within permitted levels. Emissions from the proposed Overwood ERF will be monitored every 10 seconds, 7 days a week, 365 days a year. The results will be fed back to the ERF control room, so any potential issues are known about immediately and appropriate action can be taken.

