
ANNUAL FLOWER SHOW

KIRKINTILLOCH
HORTICULTURAL
SOCIETY

ESTABLISHED 1842

Saturday 7th September 2019

1.30pm – 3.30pm

St Mary's Parish Church Halls

TEA ROOM RAFFLE TOMBOLA

SALE OF CUT FLOWERS at 3.30pm

Admission by donation



Billingtons of Lenzie 114 Kirkintilloch Rd Lenzie 0141 776 8090 www.billingtonsoflenzie.co.uk

Billington's
Deli & Ice Cream

0141 776 8090 • info@billingtonsoflenzie.co.uk
— www.billingtonsoflenzie.co.uk —
114 KIRKINTILLOCH RD, LENZIE
GLASGOW G66 4LQ (just next to the train station)

Billington's
Coffee House

01360 310620 • info@billingtonscoffeehouse.co.uk
— www.billingtonscoffeehouse.co.uk —
2 BIRDSTON RD, MILTON OF CAMPSIE
GLASGOW G66 8BQ



www.lenziegin.co.uk • info@lenziegin.co.uk • 0141 776 8090



2017 WINNER

Regional winner Scotland





रसोई
RASOI
INDIAN RESTAURANT & DELI

COME DINE WITH US

2 Courses and a side for £12 per person

Monday All Evening
Tuesday, Thursday & Sunday 4pm - 6pm
Friday & Saturdays 4pm - 5.15pm

TAPAS TUESDAY

Served from 6pm

A selection of smaller plates and curries for those who can't decide!

TANDOORI GRILL THURSDAY

Served from 6pm

1 Tandoori Dish & a 175ml glass of wine £15 per person

Served with pilau rice, house salad & traditional curry sauce

LENZIE DELHI EXPRESS

TWA BAWBEE OR WAN RUPEE

TAKE AWAY, FINE FOOD AND WINES



TEA TIME SPECIAL

SET MEAL FOR 1 FROM £9.75
AVAILABLE MONDAY - THURSDAY 4.30 - 7PM

SUNDAY SPECIAL

SET MEAL FOR 2 FROM £18.95
AVAILABLE EVERY SUNDAY 4.30PM - CLOSE

FULLY LICENSED - WE CAN DELIVER DRINKS TO YOUR HOME

VIEW THE FULL MENU AND OFFERS AT WWW.RASOI-KITCHEN.COM

OPEN 7 DAYS 365 DAYS A YEAR

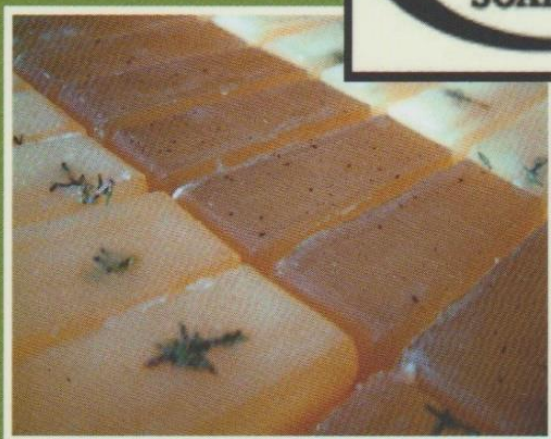
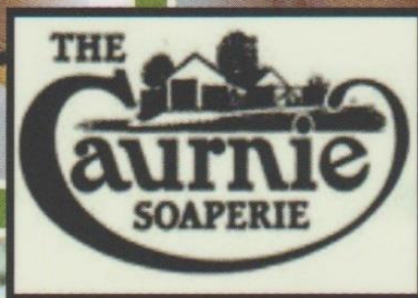
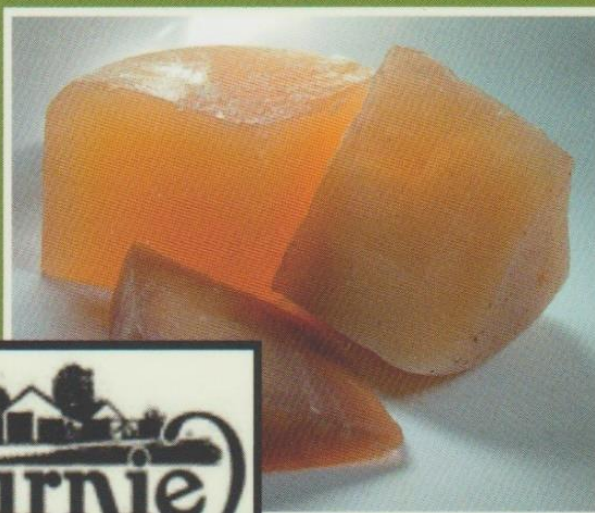
EXPRESS HOME DELIVERY AVAILABLE TO ALL SURROUNDING AREAS
1 MILLERSNEUK SHOPPING CENTRE, LENZIE

TEL: 0141 777 9090

WWW.RASOI-KITCHEN.COM 

1 MILLERSNEUK SHOPPING CENTRE, LENZIE

TEL: 0141 777 9090 WWW.RASOI-KITCHEN.COM 



Cairnie Soaperie: bringing you the finest quality natural skincare since 1922.

Locally sourced ingredients and ethical processing for clear skin and conscience.

Our solution to problem skin, Nettle Cleansing products; soap, shampoo, conditioner and moisturiser. As seen in Vogue.

Web: www.cairnie.com Email: office@cairnie.com
Phone: 0141 776 1218 www.facebook.com/CairnieSoaperie

Cairnie Soap, The Soaperie Organic Herb Garden,
Canal Lane, Kirkintilloch, G66 1QZ, Scotland

KIRKINTILLOCH HORTICULTURAL SOCIETY

The Society has a varied programme of speakers and topics at our monthly meetings, followed by tea or coffee and biscuits – the social part of the evenings. There is also an annual dinner, spring and summer outings to different gardens, and an annual plant sale as well as the Annual Flower Show.

New members are always welcome and the annual fee is only £5 - very good value for money! If you are interested in joining please speak to one of our committee members at the Show or complete your details in the tear off slip below and hand it in at the office desk at the show.



Kirkintilloch Horticultural Society - Membership application

Name.....

Address

.....Post code.....

Email

Telephone

COMPETITION RULES

Introduction: The Show will be conducted in accordance with the Show Handbook of the Royal Horticultural Society in all matters not dealt with within these rules.

Exhibitors: There will be no Show Membership fee.

Exhibits: Competitors may only enter exhibits which they have owned for 6 (six) weeks prior to the Show.

Entries: There will be a charge of £1 for entries up to 10 (ten) and £2 for 11 (eleven) entries or more. 2 (two) entries may be made in each class except the Domestic and Children sections where only one exhibit is allowed.

Refused Entries: The Committee reserves the right to refuse any entry without giving a reason.

Children: 15 Years and under. Entries are free. First name, surname and age required.

Competitors' Cards: The Society will provide combined Entry/Prize Cards. Competitors must ensure Class Number and Exhibitor Number are clearly printed in the correct spaces.

Staging and Preparation: Cut flowers must be displayed in the Society's vases except children's classes and classes 175 – 178 where own vases/containers may be used. Vegetables should be washed before staging.

Named Exhibits: Chrysanthemums and Dahlias will be judged according to the classification of the Scottish Chrysanthemum and Dahlia Society and should be named. Other horticultural exhibits should be named where possible.

Access to Hall: The hall will be open to exhibitors from 4.30pm to 9.30pm on the Friday and from 7.30am to 9am on the Saturday of the Show by which time all exhibits must be staged.

Judging: Judging will start at 9.30am on Saturday and competitors are not allowed in the hall while judging is in progress, except by special permission of the Committee.

Inspection of Gardens: The Committee has the right to visit gardens and greenhouses of competitors before or after the Show to adjudicate on any complaints or appeals.

Powers of Judges: Judges have the authority to withhold any award if they consider the exhibits are not worthy. Their decision will be final. Where no first prize is given special prizes may be reallocated to another class at the discretion of the Committee.

Protests: Protests may be made in writing to the Secretary by 3pm on the Show day with a 50p deposit returnable if the protest is sustained. The Committee's decision is final.

Prizes: Prizes will be presented at 3pm.

Claims: Prize money may be claimed from the Treasurer in the Show Office from 2.30pm. Prizes not claimed on the Show Day may be claimed by writing to the Secretary enclosing a stamped addressed envelope within 7 (seven) days of the Show. Any prize not claimed within this time will be deemed a donation to the Society.

Sale of Exhibits: Cut flowers entered for competition are the property of the Society and may be sold at the end of the Show unless "Not for Sale" is clearly displayed against the exhibit. Exhibits which are "Not for Sale" must be removed by 3.30pm when the Show closes.

Liability: While every precaution will be taken to preserve exhibits the Society is not liable for any loss or damage to the property of any exhibitor before, during or after the Show.

Trophies: All Trophies are the property of the Society for all time. Acceptance of such awards for one year is deemed to be a guarantee that such Trophies will be returned to the Secretary before the next Show.

Most Points in Show: Points awarded as follows: 1st = 6 pts, 2nd = 3 pts, 3rd = 2 pts. In the event of a tie the competitor with most 1st prizes will be given this award.

Failure to Observe Rules: If the Committee finds any competitor has not conformed to these rules or has used any deception in relation to his/her entries the Committee has the right to withhold any prizes awarded and to expel the competitor from the Society

SHOW PROGRAMME

9.30 am	Judging begins
12.00 noon	Lunch Break
1.30 pm	Exhibition Hall and Tea Room open to the public
3.00 pm	Prize Giving
3.30 pm	Show closes with Sale of Cut Flowers

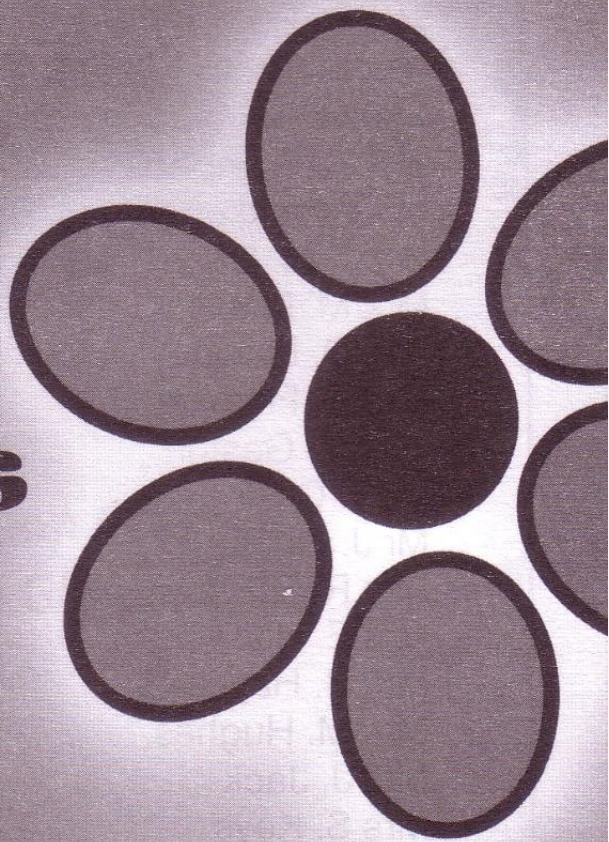
TEA, COFFEE AND HOME

BAKING AVAILABLE

IN THE MID-HALL

Flowers by Lynsey

Flowers
for all
occasions



9 Catherine St, Kirkintilloch, G66 1JB

Tel. 0141 777 8888

TELEFLORIST




**Pacitti
Jones**

**PROPERTY
DONE
PROPERLY**



Contact us on
0141 775 0005
or email
lenzie@pjglasgow.co.uk

96 Kirkintilloch Road, Lenzie G66 4LQ

KIRKINTILLOCH HORTICULTURAL SOCIETY

Office Bearers

President & Show Convenor	Paul Malcolm	578 1520
Vice President	Andrew Lothian	
Secretary	Andrea McDowall	776 1423
Treasurer & Membership Secretary	Robert Hatcher	776 1628
Speaker Secretary	Katherine Montgomery	
Press Secretary	Margaret Gibb	776 6160
Social Convenor	Anne Cairney	578 0075
Tea Convenor	Elizabeth McDonald	01360 319898

Committee Members

Errol Burchell Jack Keys David Stephenson

Life Members

June McCann Maggie Hood Andrew Lothian Pat McNeil

Show Judges

John MacLennan: Dahlias, Cut Flowers & Pot Plants,
Early Flowering Chrysanthemums

Alan Yates: Vegetables

Pat Simpson : Bonsai & Children

Jean Bickerton : Domestic



Take Away Pizzeria Fish and Chip Shop

*Delivery Service Available
Mon – Sun
5.00pm – 11.00pm*

Da Carlo

Opening Hours: Monday to Sunday 4.30pm to 11.00pm
4 Millersneuk Shopping Centre, Lenzie G66 5NP
Telephone: 0141 776 7743

THANK YOU!

The Committee and members of Kirkintilloch Horticultural Society wish to acknowledge the support of our advertisers who help make publication of our Show Schedule possible. We are very grateful and would encourage all of our readers to support our advertisers whenever possible.

ENTRY FORM

EXHIBITOR'S

ENTER CLASS NUMBERS BELOW

NUMBER.....

CUT FLOWERS	POT PLANTS	VEGETABLES	CHILDREN	DOMESTIC
			AGE..... .	

I hereby declare that the above entries are in accordance with the rules

Name.....

Address.....

.....Post Code.....

Tel Number..... Total No of Entries.....

DAHLIAS

Class	1 st	2 nd	3 rd
1. 1 vase giant or large decorative, 1 bloom	£1	50p	30p
2. 1 vase medium decorative, 3 blooms	£1	50p	30p
3. 1 vase small decorative, 3 blooms	£1	50p	30p
4. 1 vase miniature, 3 blooms	£1	50p	30p
5. 1 vase giant cactus or semi cactus, 1 bloom	£1	50p	30p
6. 1 vase medium cactus and/or semi cactus, 3 blooms	£1	50p	30p
7. 1 vase small cactus and/or semi cactus, 3 blooms	£1	50p	30p
8. 1 vase pompon, 3 blooms	£1	50p	30p
9. 1 vase, mixed for effect	£1	50p	30p
10. 3 vases, 3 varieties, 3 blooms of same variety in each vase	£2	£1.50	£1
11. 1 vase any type, any variety, 3 blooms	£1	50p	30p
12. 1 basket any type, any variety or mixed, minimum 5 blooms	£1	50p	30p

Baskets will be supplied by the Society

**Rosette – Best Exhibit
Medal – Most Points**

EARLY FLOWERING CHRYSANTHEMUMS

Class	1 st	2 nd	3 rd
15. 3 vases, 3 varieties, 3 blooms of same variety each vase	£2	£1.50	£1
16. 1 vase large incurved/intermediate, 1 variety, 3 blooms	£1	50p	30p
17. 1 vase large reflex, 1 variety, 3 blooms	£1	50p	30p
18. 1 vase large mixed, 3 blooms	£1	50p	30p
19. 1 vase medium incurved/intermediate, 1 variety, 3 blooms	£1	50p	30p
20. 1 vase medium reflex, 1 variety, 3 blooms	£1	50p	30p
21. 1 vase medium mixed, 3 blooms	£1	50p	30p
22. 1 specimen bloom	£1	50p	30p
23. 1 vase sprays, 3 stems	£1	50p	30p
24. 1 vase any variety, any type	£1	50p	30p

**Rosette – Best Vase
Medal – Most Points**

ROSES

Class	1 st	2 nd	3 rd
30. 1 miniature grown in pot	£1	50p	30p
31. 1 vase HT, 5 blooms	£1	50p	30p
32. 1 vase HT, 3 blooms	£1	50p	30p
33. 1 vase HT, 1 bloom	£1	50p	30p
34. 1 bloom for fragrance only	£1	50p	30p
35. 1 vase floribunda, 3 stems	£1	50p	30p
36. 1 vase floribunda, single stem	£1	50p	30p
37. 1 vase any type	£1	50p	30p

Rosette - Best Exhibit

Medal – Most Points

GLADIOLI

Class	1st	2nd	3rd
40. 2 vases large flowering, 2 spikes per vase, any variety	£2	£1.50	£1
41. 1 vase large flowering, 3 spikes, any variety	£1	50p	30p
42. 1 vase, 2 spikes, any variety	£1	50p	30p
43. 1 vase primulinus/butterfly, 3 spikes, any variety	£1	50p	30p
44. 1 vase, 1 spike, any variety	£1	50p	30p

Rosette – Best Single Spike – Class 44

Medal – Best Vase

Medal – Most Points

CUT FLOWERS

Class	1st	2nd	3rd
46. 1 vase hydrangea, 3 heads	£1	50p	30p
47. 1 vase perennials	£1	50p	30p
48. 1 vase annuals	£1	50p	30p
49. 1 vase African marigolds, 5 blooms	£1	50p	30p
50. 1 vase Scotch marigolds, 5 blooms	£1	50p	30p
51. 1 vase French marigolds, 5 blooms	£1	50p	30p
52. 1 vase antirrhinums, 5 spikes	£1	50p	30p
53. 1 vase double asters, 5 blooms	£1	50p	30p
54. 1 vase single asters, 5 blooms	£1	50p	30p
55. 1 vase phlox, 5 stems	£1	50p	30p
56. 1 board violas, 6 blooms	£1	50p	30p
57. 1 board pansies, 6 blooms	£1	50p	30p
58. 1 vase sweet peas, 7 spikes, mixed	£1	50p	30p
59. 2 vases of 7 spikes, single colour	£1	50p	30p
60. 2 vases sweet peas, 9 spikes per vase	£1	50p	30p

Rosette - Best Exhibit

Medal - Most Points

Medal - Class 60

POT PLANTS

Class	1 st	2 nd	3 rd
HANGING BASKET			
61. 1 hanging basket	£2	£1.50	£1
Medal – Best Exhibit			
FUCHSIAS			
62. 2 fuchsias, max 3.5" (9cm) pots	£1	50p	30p
63. 1 standard fuchsia any size, max 8" (20cm) pot	£1	50p	30p
64. 1 fuchsia bush, max 8" (20cm) pot	£1	50p	30p
Medal – Best Exhibit			
BEGONIAS			
65. 1 begonia in flower, fibrous rooted	£1	50p	30p
66. 1 begonia in flower, tuberous rooted	£1	50p	30p
67. 2 begonias in flower, tuberous rooted	£1	50p	30p
Medal – Best Exhibit			
MIXED POTS			
68. 1 geranium in bloom	£1	50p	30p
69. 2 geraniums in bloom	£1	50p	30p
70. 1 pot plant, foliage only	£1	50p	30p
71. 1 coleus	£1	50p	30p
72. 3 plants, any, max 5" (13cm) pots	£1	50p	30p
73. 1 gloxinia	£1	50p	30p
74. Any single pot plant in flower, excluding classes 61-73	£1	50p	30p
75. 1 container of plants, any size, any shape	£1	50p	30p
76. 3 pots cacti, 3 varieties, max 6" (15cm) pots	£1	50p	30p
77. 1 pot cacti, max 3" (8cm) pot	£1	50p	30p
78. 1 pot cacti, over 3" (8cm) pot	£1	50p	30p
79. 3 pots succulents, 3 varieties, max 6" (15cm) pots	£1	50p	30p
80. 1 pot succulent, max 3" (8cm) pot	£1	50p	30p
81. 1 pot succulent, over 3" (8cm) pot	£1	50p	30p
82. 1 pot marigolds	£1	50p	30p
83. 1 Alpine plant	£1	50p	30p
84. 1 heath or heather in bloom	£1	50p	30p
85. 1 pot lobelia	£1	50p	30p
Medal – Best Exhibit			
BONSAI			
86. 1 specimen bonsai, evergreen	£1	50p	30p
87. 1 specimen bonsai, deciduous	£1	50p	30p
Medal – Best Exhibit			
ORCHID			
88. 1 orchid	£1	50p	30p
Medal – Best Exhibit			
89. PLANTER with single plant	£1	50p	30p
Medal – Best Exhibit			
90. TROUGH OF ALPINES	£1	50p	30p
Medal – Best Exhibit			

Medal – Most Points– Classes 61-90

VEGETABLES

Class		1 st	2 nd	3 rd
91.	1 basket of vegetables for kitchen use, 6 kinds	£2	£1.50	£1
92.	2 leeks, long	£1	50p	30p
93.	2 leeks, pot	£1	50p	30p
94.	3 onions, seed	£1	50p	30p
95.	3 carrots, long pointed	£1	50p	30p
96.	3 carrots, stump	£1	50p	30p
97.	3 parsnips	£1	50p	30p
98.	1 pot herb, 1 plant, max 8" (20cm) pot	£1	50p	30p
99.	3 beet, ball	£1	50p	30p
100.	3 beet, long or cylindrical	£1	50p	30p
101.	3 turnips, golden ball	£1	50p	30p
102.	2 swedes	£1	50p	30p
103.	1 cabbage, round	£1	50p	30p
104.	1 cabbage, conical	£1	50p	30p
105.	1 cauliflower	£1	50p	30p
106.	1 cucumber	£1	50p	30p
107.	6 pods peas	£1	50p	30p
108.	6 French beans	£1	50p	30p
109.	6 runner beans	£1	50p	30p
110.	6 broad beans	£1	50p	30p
111.	6 tomatoes, quality	£1	50p	30p
112.	1 truss tomatoes, quality	£1	50p	30p
113.	6 cherry tomatoes	£1	50p	30p
114.	3 uncut sticks rhubarb including 2" (5cm) of leaf	£1	50p	30p
115.	1 exhibit of any other vegetable	£1	50p	30p
116.	3 onions from sets	£1	50p	30p
117.	3 onions from sets, red	£1	50p	30p
118.	6 shallots, round or pear shaped	£1	50p	30p
119.	12 potatoes, 4 each of 3 varieties	£1	50p	30p
120.	4 potatoes, white	£1	50p	30p
121.	4 potatoes, coloured	£1	50p	30p
122.	3 apples on plate, 3 of same, any variety	£1	50p	30p
123.	3 pears on plate, 3 of same, any variety	£1	50p	30p
124.	3 pieces of fruit on plate, 3 of same, any variety	£1	50p	30p
125.	Novelty Class - 1 misshapen fruit or vegetable	£1	50p	30p
126.	3 courgettes	£1	50p	30p
127.	1 marrow	£1	50p	30p

**Rosette – Best Exhibit
Medal– Most Points Classes 91-127
Medal – Class 119**

**Rosette
Best Exhibit in Horticultural Sections
Classes 1-127**

**Caulders Voucher
Most Points in Show
Classes 1-185**

CHILDREN

Only 1 entry per exhibitor per class

Class		1 st	2 nd	3 rd
130.	1 bonsai	£1	50p	30p
131.	1 pot plant, max 5" (13cm) pot	£1	50p	30p
132.	1 potato head	£1	50p	30p
133.	1 arrangement of garden flowers	£1	50p	30p
134.	1 miniature garden, max 24"x18" (60cmx45cm)	£1	50p	30p
135.	1 greetings card	£1	50p	30p
136.	2 iced cupcakes	£1	50p	30p
137.	1 painting or drawing of garden or favourite flower	£1	50p	30p
138.	1 handwritten poem on a floral or nature theme 8"x5" (20cmx13cm)	£1	50p	30p
139.	1 poster for Flower Show - A4 sheet	£1	50p	30p
140.	1 animal made from vegetable(s)	£1	50p	30p
141.	1 sunflower, flower head for largest diameter	£1	50p	30p
142.	1 flower made with dried seeds and pasta stuck on card – for 8 years and under	£1	50p	30p
143.	1 mounted photograph of vegetable(s), flower(s) or fruit – for age 9 to 15 years	£1	50p	30p

Medal – Class 130
Medal – Best Exhibit
Medal – Most Points Classes 130-143
Medal and Society Prize – Class 142
Medal and Society Prize – Class 143

DOMESTIC

Only 1 entry per exhibitor per Class

Class	1 st	2 nd	3 rd
JAMS & CHUTNEY			
145. 1 pot jelly, any type	£1	50p	30p
146. 1 pot lemon curd	£1	50p	30p
147. 1 pot marmalade	£1	50p	30p
148. 1 pot blackcurrant jam	£1	50p	30p
149. 1 pot raspberry jam	£1	50p	30p
150. 1 pot strawberry jam	£1	50p	30p
151. 1 pot jam any type other than above	£1	50p	30p
152. 1 pot chutney	£1	50p	30p

Medal – Best Exhibit

All baking exhibits should be placed on paper doilies, supplied

BAKING			
153. 4 plain scones	£1	50p	30p
154. 4 fruit scones	£1	50p	30p
155. 4 pancakes	£1	50p	30p
156. 4 shortbread fingers	£1	50p	30p
157. 1 sultana cake	£1	50p	30p
158. 4 iced cupcakes	£1	50p	30p
159. 1 lemon drizzle cake	£1	50p	30p
160. 1 cherry cake	£1	50p	30p
161. 1 apple tart	£1	50p	30p
162. 1 gingerbread	£1	50p	30p
163. 1 banana loaf	£1	50p	30p
164. 1 afternoon tea plate, 3 items	£1	50p	30p
165. 4 chocolate chip cookies	£1	50p	30p
166. 6 truffles	£1	50p	30p
167. 1 bar tablet	£1	50p	30p
168. 4 petit fours	£1	50p	30p

Medal – Best Exhibit

CRAFT			
169. 1 item patchwork or quilting	£1	50p	30p
170. 50g yarn, best use	£1	50p	30p
171. 1 knitted toy	£1	50p	30p
172. 1 sewn soft toy	£1	50p	30p
173. 1 baby's jacket	£1	50p	30p
174. 1 scenic photograph	£1	50p	30p
175. 1 photograph plant(s) or flower(s) max 7"x5" (18x13cm)	£1	50p	30p
176. 1 cross stitch picture	£1	50p	30p
177. 1 adult knitted garment	£1	50p	30p
178. 1 piece of embroidery work	£1	50p	30p
179. 1 item of handicraft other than above	£1	50p	30p
180. 1 floating bowl arrangement, max 8" (20cm)	£1	50p	30p
181. 1 floral arrangement in a cup and saucer	£1	50p	30p
182. 1 floral arrangement in an unusual container	£1	50p	30p
183. 1 floral arrangement in miniature, max 4"x4"x4" (10cmx10cmx10cm)	£1	50p	30p
184. 1 decoupage picture	£1	50p	30p
185. 1 hand crafted greetings card	£1	50p	30p

Medal – Best Exhibit

Medal – Most Points – Classes 145-185

Rosette – Best Exhibit – Classes 145-185

CLAIM FORM

Exhibitor's
No.....

Class Number	Prize 1 st 2 nd 3 rd	Prize Money	Class Number	Prize 1 st 2 nd 3 rd	Prize Money
				Carried Forward	
	Carry Forward			Grand Total	

Enter Class Number in appropriate column
 Then enter Prize i.e. 1st, 2nd or 3rd
 Then enter Prize Money e.g. £1, 50p, 30p
 Carry forward money to last column if necessary

Name.....

Address.....

.....

Post CodeTel Number.....



viewfield

DESIGN | DISPLAY | PRINT


Unit 11, Whitegates Business Park,
Lenzie Road Kirkintilloch, Glasgow G66 3BQ

T. **0141 776 0500**

E. sales@viewfieldgallery.com

PROUD TO SPONSOR LENZIE RUGBY CLUB

gallery 
& framer



A selection of
Scottish and
Local Artists

No parking problems
and we can deliver



Framing service
with a full
selection of
traditional and
modern frames

tel: 0141 775 3533

web: galleryandframer.com

Btable13 express

Your local coffee shop and deli specialising in fresh, locally sourced Scottish produce.

From soups and sandwiches to coffee and cakes.....
everything made fresh every day.

- Coffee
- Homemade soups
- Fresh salads
- Sandwiches
- Wraps
- Breakfast
- Snacks
- Pies
- Cakes
- Deli
- Buffet platters

Table 13 express.... 39 DONALDSON STREET....KIRKINTILLOCH....G66 1XE

TEL - 0141 776 1313 FACEBOOK - Table 13 express



MARTIN VETERINARY CENTRE

10 STRATHKELVIN PLACE, SOUTHBANK MARINA,

KIRKINTILLOCH, G66 1XT

0141 775 2503



Long established, locally run veterinary practice

- LARGE PURPOSE-BUILT SURGERY
- SEPARATE DOG AND CAT WAITING AREAS WITHIN A LARGE BRIGHT RECEPTION AREA
- TWO PURPOSE BUILT OPERATING THEATRES AND DENTAL SUITE
- DOG AND CAT HOSPITALISATION WARDS WHICH ARE FULLY AIR-CONDITIONED AND CENTRALLY HEATED FOR YOUR PETS COMFORT
- QUIET ROOM WHERE YOU CAN SPEND ALL THE TIME YOU REQUIRE WITH YOUR PET AT THOSE DIFFICULT TIMES
- IN HOUSE XRAY FACILITIES AND WELL-EQUIPPED LABORATORY
- SEPARATE ISOLATION FACILITIES FOR PETS THAT MAY HAVE INFECTIOUS ILLNESS
- CAR PARKING RIGHT OUTSIDE THE SURGERY FOR EXCLUSIVE USE OF OUR CLIENTS
- WE WOULD LIKE TO WELCOME YOU ALL TO OUR PRACTICE



Please phone reception for more information on our

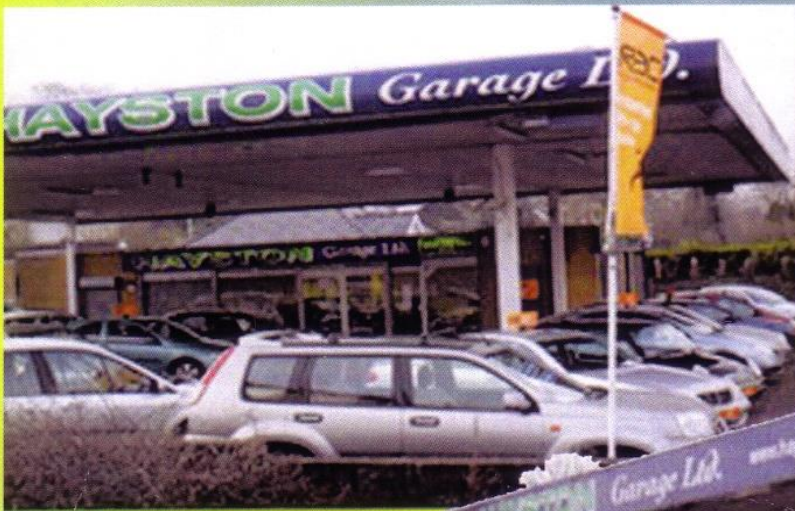
Puppy and kitten vaccination club

It includes; a free first worming dose, free microchip (normally £10), full initial health check, full vaccination course, opportunity to attend puppy parties and a free 5-month-old health check. All to help get your puppy or kitten the very best start in life.

HAYSTON Garage Ltd.

RAC
warranty

First For Quality Used Cars



Where experience counts

OVER 50 CARS IN STOCK

Visit our website: www.haystongarage.co.uk

54-56 Kilsyth Road, Kirkintilloch

0141 776 1708





Everything
for the
garden
and more
at Caulders



We are a local, independent family run group of garden centres.

We have 7 garden centres which are located in:
Milngavie, Kirkintilloch, Newton Mearns, Erskine, Cupar,
Cumbernauld and Kinross.

Everything for the garden and more at Caulders Garden Centres


MUGDOCK
Mugdock Country Park,
Milngavie,
Glasgow,
G62 8EL
Tel: 0141 955 0011



KIRKINTILLOCH
63 Kilsyth Road
Kirkintilloch,
Glasgow,
G66 1QF
Tel: 0141 776 2001


NEWTON MEARNS
Mearns Road South,
Mearnskirk,
Newton Mearns,
Glasgow G77 6RS
Tel 0141 639 9777


ERSKINE
Erskine
Bishopton,
Renfrewshire,
PA7 5PU
TEL: 0141 814 4626


CUPAR
Eden Valley Business Park
Cupar
Fife
KY15 4RB
TEL: 01334 655 766


CUMBERNAULD
Westerwood Roundabout,
Cumbernauld,
Glasgow,
G68 0EB
TEL: 01236 736 100


KINROSS
Turthills,
Kinross,
KY13 0NQ
TEL: 01577 863 327

OPEN 7 DAYS FROM 9 - 5.30 • FREE PARKING • DISABLED FRIENDLY

www.caulders.co.uk www.facebook.com/cauldery