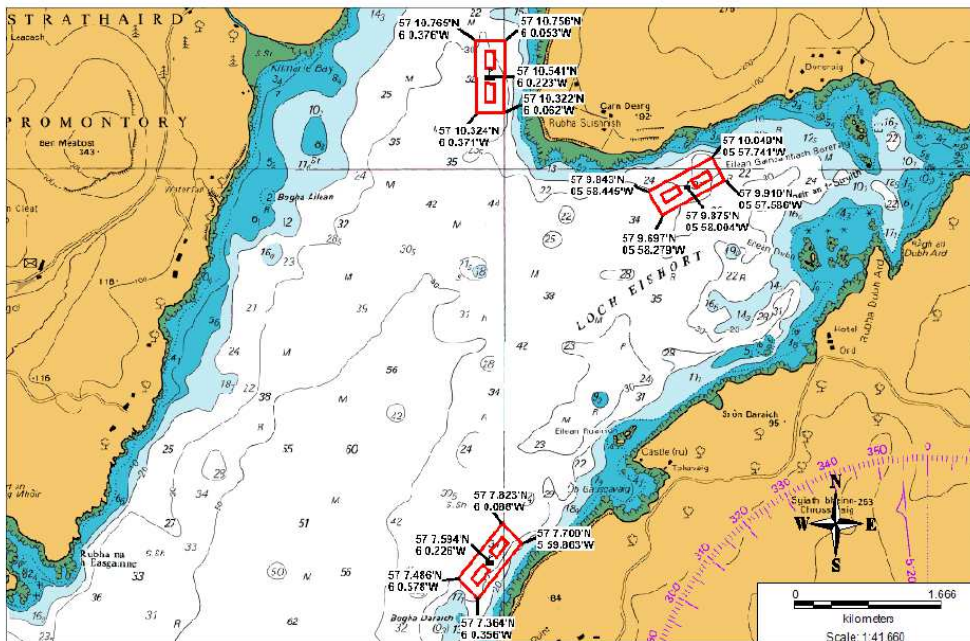


BIODIVERSITY

of Loch Eishort

An opportunity for residents of Sleat (and others) to visit a local seashore and witness its spectacular wildlife above and below the water, with particular consideration of predictable harmful ecological effects of the proposed fish farm developments.



Led by local biologists James Merryweather and Roger Cottis

Contact: 01599 566291 or 01471 833325

Meet at Ord on the sea front

11.30 a.m. on 15th November 2012

Low tide around 1.15 p.m. End approx. 2.30 p.m.

Wear warm, waterproof clothing and bring your lunch. Wellies or waders are essential and thermal rubber gloves recommended. *The going will be rough in places: grassy/muddy slopes, slippery boulders etc.*

