

Pride in Portbury

Portbury Parish Newsletter – Spring 2024



Spring is finally here! The bluebells are out and the village is full of visitors, coming to enjoy them. There are lots of activities taking place at the Church, School, Village Hall and elsewhere.

The Bluebell café is open at the Church for the next two weekends – donations of cakes and biscuits are always welcome! Anyone with time to donate to help serve would also be very welcome! See below for more information about Bluebell Season in Portbury.

We always approach local organisations and businesses to contribute to the newsletter. If you would like to add to the next edition, please email crisc@portburyPC.org.uk. We are keen to include stories and information relevant to all residents of the village.

Parish News

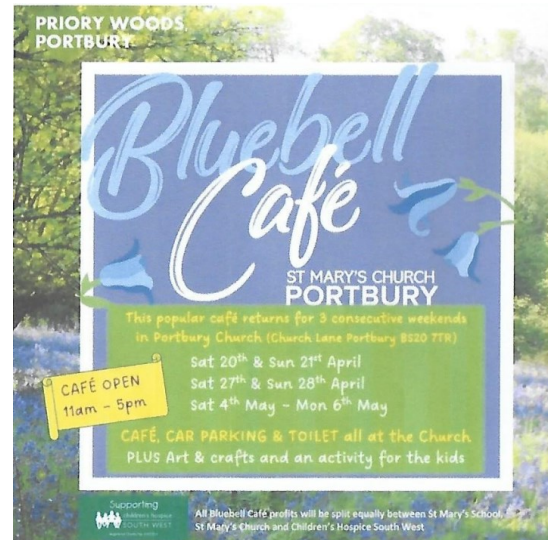
Flood Actions Meeting

Following the recent flooding in the Parish and concerns raised by residents, the Parish Council held a meeting to canvass residents' issues and to discuss possible ways forward to mitigate further flooding incidents. The meeting proved especially useful for councillors and residents alike, giving a real 'Parish-wide' view of the impact of the flooding from Sheepway to the High Street.

It was clear from the discussions that how the water is managed and diverted away from residences in the Parish is a multi-faceted problem with no easy 'one-stop' fix.

During the meeting, many possible mitigations were put forward such as drain, gully and drainage ditch clearing. One suggestion put forward by a resident was to get a professional inspection and report of all the drainage issues and the best mitigation option for the Parish. The Parish Council is now in the process of organising that as a first step for prioritising any other following work.

The Parish Council would like to thank all those residents who came along and contributed to the meeting, which was productive and positive.



Flooding outside the Village Hall
Picture: Barbara Langdon

No Parking Cones for Bluebells

The Parish Council have a supply of cones which can be used during the Bluebell season to help direct visitors to park safely and sensibly. If you are a resident on Caswell Lane or Station Road and feel there is a need for cones outside your house, on one side of the road, these will be available to collect on Fridays from the allotments on Station Rd. Please store during the week and return after the crowds have subsided on Monday 6th May.

The cones may not be left out during the week and are advisory (it is not illegal to park by them) but they help to usher people towards the Church. Parking is available at the school, next door to the Bluebell Café so walkers can enjoy a cup of tea and some cake at either end of their walk. Sadly, the Rugby Club parking is in use this year so please do not direct people there.

The Priory Pub are offering parking as well, but their car park is for customers so please be aware that people who park there are expected to make a purchase from the pub!



Traffic updates

The Parish council are continuing to work on ideas to reduce the volume and speed of traffic through the village. Although progress is slow, we have been working with North Somerset Council (NSC) to establish appropriate locations and get permission to use a mobile speed indicator device. We hope to be able to procure a device soon which will be employed in the village to help deter drivers from speeding and collect valuable data on average speeds, top speeds, and traffic volume. This data can then support traffic scheme requests to NSC to improve village traffic.

Some good news to share is that a traffic regulation order, which prevented police from carrying out speed checks in the village, has now been corrected and lifted. Therefore, the police have now returned and will be performing regular speed checks in the village.

Community Speed Watch

We're continuing our efforts to establish a Community Speed Watch, but unfortunately, we do not currently have enough volunteers to initiate and sustain it. The speed watch isn't solely about discouraging speeding or notifying drivers of their speed in our village; its primary goal is to gather essential data to demonstrate to NSC the speed at which people are driving here. So, if you can spare even a small amount of your free time, and are willing to help reduce the speed of traffic in our village, please email simonp@portburypc.org.uk to find out how you can help.



Parish Council meetings and vacancies: this is an opportunity to help to represent the views of the village. Everyone is welcome to attend meetings (1st Tuesday of the month in the Village Hall). Agendas are published one week before meetings and **only agenda items** can be discussed. Any member of the community may add items to the agenda prior to publication. Full details are on the Parish Council website, together with information about joining the council.

The Parish Council Annual Residents' Meeting is on 15th May, 7.00pm at the Village Hall – all are welcome!



Above: New Year

Below: Renovations!



Portbury Village Hall and Social Club

The New Year started at the Village Hall with a fantastic **New Years' Party**. Strangely, we can't seem to find too many photos from later in the night but it was a great way to see in 2024 at the heart of the community – watch out for booking details for next year!

Since the start of the year, **renovations and repairs** have continued: with the Hall originally having been constructed in 1892, there are always jobs to be done and it is thanks to a fantastic group of volunteers that we have restored the floor (including replacement of some very "delicate" sections! If you fancy a bit of carpentry, painting, sanding or you have any other skills and would like to get involved, drop in and let us know!

We welcomed live music back to the Village Hall with a fantastic performance from **Rhiannon Paige** – a singer/songwriter from Bristol – at the start of April. Everyone who came along had a great time and Rhiannon will be returning to the Village with a full band later in the year. We will also be hosting other singers and bands so watch this space!



Above: Rhiannon Paige live at the Village Hall

We now have a **monthly Quiz Night**, taking place (usually) on the third Saturday of each month - £5 per couple to enter. Numbers are growing each time and, with a Bingo format, knowing all of the answers is not the only way to win! This year, profits are split between the renovation of the club and Pancreatic Cancer UK as our chosen charity.

Our **Eurovision Song Contest Night** will be on again – join us for a night of glamour, class and drunken silliness on **11th May!**

Rock and Roll Bingo is returning – a loud and enjoyable night which is always very popular. Come and join us on Friday 7th June: arrive early to make sure you get a table in the main bar area – the Alley seats never seem to win!

Summer Skittles Season returns on Wednesday 29th May. Six village teams will be competing. This is a great way to meet your neighbours and enjoy a fun night out each week. All of the teams are welcoming and always happy to have new members. If you just fancy dropping in, the clubroom is open from 8pm on Wednesdays, Thursdays and Fridays for the skittles matches.

Follow us on Facebook for a regular update of events which are coming up.

The hall and clubroom are run by volunteers and we are always looking for people to join the team (full training can be given!)

Membership: the Social Club is funded through membership – although anyone is welcome to come and visit (£1 day fee): prices have remained the same as in previous years: £10 individual, £20 family, £5 Senior. Forms can be collected (and payment taken) at the bar or you can renew by BACS or Direct Debit to Portbury Village Hall - sort code 54 30 06 account number 34334408.

Hire the Hall, Club room or whole facility for your next event:

www.portburyvh.org.uk or email

bookingssec@portburyvh.org.uk

St Mary's Church Events

St Mary's Church continues to offer a welcoming space for all villagers who would like to sit, think, pray or just enjoy the beauty of the building and space.

The churchyard is a lovely, quiet space to enjoy nature and the beauty of the area.

April

After a prolonged winter break, our regular **Community Creative Café** returned on **Saturday 13th April**. It was open all day from 10 a.m. – 4 p.m. & offering a delicious array of home-made cakes & a selection of drinks.

The programme included **The Happy Hearts** from 10 – 12 a.m.; a great art session full of positivity & fun for children led by Jo Green.

Our well known & popular **Bluebell Café** opens this year and we saw fantastic numbers on our opening weekend of **Saturday 20th April & Sunday 21st April**. The café will be open again on **Saturday 27th April from 10 a.m.- 4 p.m & Sunday 28th April from 12 – 4 p.m.** The café splits profits equally between Children's Hospice South West, St Mary's School and St Mary's Church. We welcome donations of cakes, biscuits and other baked goods, as well as willing volunteers to help staff the café over the Bluebell period.

May

The **Bluebell Café** returns on **Saturday 4th May, from 10am – 4pm** and on both **Sunday 5th May & Bank Holiday Monday 6th May at the same times.**

The **Community Creative Café** including the **Happy Hearts** continues with the same arrangements on **Saturday 11th May.**

HeartBeats

Making music from your heart

- **Beginners Sessions**
Wednesdays 5pm to 5.30pm
Fridays 3.30pm to 4pm
- **Orchestra Practice**
Wednesdays 6pm to 7pm
- **HeartBeats Singers**
Wednesdays 6pm to 7pm

EVERYONE WELCOME - FREE

St Mary's Church
Portbury BS20 7TR



The interior of St Mary's Church – John Liddle

Friends of Portbury Wharf Nature Reserve



Working with Industrial Modern Furniture, Friends of Portbury Wharf Nature Reserve have recently installed a 'Bug Hotel'. This was commissioned after constant liaison and crafted by John as a steel honeycomb. This was installed at the Nature Reserve on 10th April, made possible by a grant from National Grid Customers UK and facilitated by North Somerset Council.



The structure will be filled with various dried materials in order that this piece of art serves as a 'Bug House' for nesting and hibernating invertebrates. This will help provide a resting place for the busy pollinators as they go about their business over the coming months.

St Mary's Primary School

Are you looking for an opportunity to volunteer to support your community? We are looking for Foundation Governors with a variety of skills and backgrounds to join the team at St Mary's and Wraxall Primary Schools Federation.

This is a fantastic opportunity to learn a range of new skills, directly contribute to the learning and life experiences of local children. You do not need to have children attending the school and we are actively seeking applications from those in the wider community.

For more information, please contact Cath Campbell, Chair of Governors at cath.campbell@stmarysprimaryportbury.org



Portbury Women's Institute (WI)

Approaching our 90th Birthday, Portbury WI members have been busy making pennants to create bunting. Members have stitched or embroidered their name and the artistic amongst us have quilted or added embellishments too. Our talented President has created a beautiful PORTBURY WI section of bunting and will be adding our named pennants to each side to give us something to display to mark this special year.

Our numbers are growing, with four new members in the last two months. If you would like to come and try us out, you are welcome to attend a meeting or two before you join. We have monthly meetings, usually with a speaker or activity, walks with lunch and ad hoc craft and social activities through the year.

Being a Portbury WI member means you are also a member of the Avon Federation of WIs and National Federation of WIs which opens up opportunities for more activities, educational opportunities through our online Denman courses and the ability to get involved with our Campaigning too.

This May, WIs across the country will be discussing the resolution to be put at our AGM: Dental Health Matters.

June will be our 90th birthday and we are celebrating with a party. The entertainment for the evening is being kept a closely guarded secret but is sure to surprise!

Then in July we will be having a talk about the WC&P Railway Group – hearing how they work to remember the Weston, Clevedon and Portishead Railway.

We meet on third Tuesday of each month (except August) at 7.30pm, Portbury Village Hall (side entrance). To find out more before you come along, please contact Helen Francis on 07503 134817. Find us on Facebook: Portbury WI

Thank you!

Thank you for taking the time to read our newsletter. Please let us know what you would like to see in our next issue – due out in July. If you would like to contribute an article or feature, please contact crisc@portburypc.org.uk

Remember, the Parish Council Annual Residents' Meeting is on 15th May, 7.00pm at the Village Hall – all residents of Portbury are welcome!

Please email [Portbury parish council@hotmail.com](mailto:Portbury_parish_council@hotmail.com) to let us know if you are coming so we can arrange the Hall accordingly.