

North Frodingham  
*Village Voice*  
May 2022



A team at Robinwood



Dress to impress!

Pupils from North Frodingham Primary School enjoying a wide range of activities.

**Contact *your* Village Voice:**

Joanne Parker 07596 719763 [joanne@jpwritingservices.co.uk](mailto:joanne@jpwritingservices.co.uk)

Peter Bemard 01262 488983 [peterbemard@live.co.uk](mailto:peterbemard@live.co.uk)

**Deadline for inclusion in next edition: 15 June 2022**





**Tel: 01262 488 300**

#### **NEW OPENING HOURS**

	<b>Bar</b>	<b>Food</b>
<b>Monday</b>	5-10pm	Kitchen closed
<b>Tuesday</b>	5-10pm	Kitchen closed
<b>Wednesday</b>	12-2pm & 5-10pm	12-2pm & 5-8pm
<b>Thursday</b>	12-2pm & 5-11pm	12-2pm & 5-8pm
<b>Friday</b>	12noon - 11pm	12-2pm & 5-8pm
<b>Saturday</b>	12noon - 11pm	12-2pm & 5-8pm
<b>Sunday</b>	12noon – 10pm	12-3pm & 5-8pm

*Please book your table in advance to avoid disappointment*

*To book your function or private dining event please contact us*

### **SUNDAY LUNCH**

**Traditional Homecooked Sunday Lunch**

**£11.95**

### **BURGER NIGHT**

**Every Wednesday**

**Burger, Chips and a Pint**

**£11.95**

### **AFTERNOON TEA**

**A selection of sandwiches, cakes & savouries inc tea or coffee**

**Every Friday & Saturday**

**2pm – 5pm**

**Booking Essential**

**(24 hours notice required)**

**£11.95 per person**

### **LUNCHTIME SPECIAL**

**Eat In or Takeaway**

**Wednesday – Saturday**

**12 – 2pm**

**Choice of Baguette or Wrap (various fillings), Pipers Crisps & Can of Coke/Fanta/Sprite or Tea/Coffee**

**£5.00**

**Monthly Charity Quiz Night**

**Last Friday of each month**

**In aid of North Frodingham Playing Fields**

## Editorial

Welcome to the latest edition of the Village Voice.

I hope you all enjoyed the Easter break.

Anyone else taken aback that we are already at the end of April?

Thank you to the organisers of the book hunt around the village. It was a lovely idea, and I am sure many families had fun finding and reading the books. Do drop us a line and let us know if your children enjoyed a particular book.

It will not be long until the extra Bank Holiday in June to mark the Queen's Platinum Jubilee. Is anyone planning a street party or other celebration?

I have great memories from the Silver Jubilee when we had a massive street party and all the neighbours celebrated together. If you have any memories from past celebrations or photographs from any events you are running this year, please share them in the next edition.

Photographs, poems, memories and anecdotes are all welcome. If you have something to submit but can't send us a digital file, a handwritten piece is no problem.


As always, I want to say a big thank you to Peter for his continued support and to all of our regular contributors and advertisers and our loyal and dedicated band of distributors who make the magazine possible.

Don't forget to support the new weekly post office facility in the Community Centre.

Joanne Parker  
Editor

### Advertisement rates

If you have a service to offer or you are a trades person, remember, this newsletter is delivered to every household in the village, so it is the ideal low-cost way to promote your business.



 **YVONNE TURNER**  
FOOT HEALTHCARE PRACTITIONER  
NAIL TRIMMING, CORN REMOVAL, VERRUCAS  
DIABETIC FOOT HEALTHCARE, CALLUS REDUCTION  
26a Main Street  
North Frodingham  
Tel: 01262 488958  
Mobile: 07811888473  
Email: turneryvonne1@sky.com

Size	B&W £	Colour £
Credit card	5	n/a
Quarter page	8	n/a
Half page	12	17
Full page	22	28
Back cover	n/a	30
Front cover strip	n/a	5

## **News from the Parish Council**

Councillors Brian Rookes and Carl Silcock recently resigned as Councillors and the Parish Council would like to thank them for their considerable hard work over the years and to also to welcome new Councillors David Mahl and John Murray.

The Post Office service in the Social Centre began last week and is running every Wednesday from 12 noon to 1:30pm. Please visit if you can to keep the service viable. The service provides all post office services with the exception of foreign currency. It even sells birthday cards!

After a recent incident, residents who have loose stones on their driveways are asked to please make sure the stones are regularly swept off pavements to prevent accidents, especially for the elderly and disabled.

The Parish Council is still looking to employ someone to look after the maintenance of the benches in the village, if you are interested, please contact the Clerk on 01964 603220 or email [clerk@northfrodinghampc.org](mailto:clerk@northfrodinghampc.org)

---

## **Winding Up the NOW Campaign Funds – a letter from Angela McKie, NOW group chairman**

The NOW committee held a meeting 18<sup>th</sup> February 2022 to discuss the way forward with the funds held in the NOW Group bank account.

The bank account has £29,158.76. The only outstanding expense is £63.17 for the last 3 years web site annual fees leaving a total of £29,095.59.

This amount will be shared equally between the villages of Beeford, North Frodingham and Foston on the Wolds and each village will receive £9,598.53 on 1<sup>st</sup> July 2022. Beeford Playing Fields, North Frodingham Playing Fields and Foston Village Hall have agreed to accept the transfers and will use the funds within their communities.

The NOW Group will be disbanded after the transfer of funds has been completed and the bank account closed and on behalf of the NOW Group I would once again like to thank everyone who has been involved with the campaign. The past and present members of the committee who gave so much in time and dedication and all members of the communities who donated in time and money and who came together to achieve a very strong and successful campaign.

Thank you.

Angela McKie

On behalf of the NOW Group committee

Angela McKie, Dave Goodwin, Di Blanchard, Sally and Dave Young, Nick Muirhead, Catherine and Peter Whiffin



*Established family business  
offering lots of love & care*



**Warley Cross**  
Kennels & Cattery

**Five Star Rated by East  
Riding of Yorkshire Council**



## ***Full Boarding Service - Single Day to Long Stays***

- Purpose-built kennels all heated with covered runs.*
- Large exercise paddocks for quality playtime.*
- Fabulous purpose-built cattery.*
- Beautiful countryside setting. Stimulating environment for your pets.*



***Viewings Welcome - No Appointment Required***

East Riding of Yorkshire Council

Rating: ★★★★★

Licence Holder: Warley Cross Kennels and Cattery

Licence No.: AA4244827

***www.warleycrosskennels.co.uk Telephone: 01262 488330***

*Warley Cross, Brandesburton, East Yorkshire, YO25 8EW. Located just off the A165 between Beverley and Bridlington*

## Useful information

The mobile library will be visiting North Frodingham on **3** and **31 May**. It will be in the Blue Post car park between 10.50 am and 11.35 am.

Neighbourhood Watch	488640
Beeford Surgery Reception opening hours 8 am to 12 pm and 4 pm to 6 pm. Closed Wednesday afternoon.	488234 – including emergencies
Vicar	488042
Church Warden	488647
Parish Council	01946 603220 northfrodpc@gmail.com
Social Centre	481240
Priory Vets	481005
Blue Post	488300
Village Voice	488983
School	488227
Beeford Post Office	488220
Jonathan Owen	420550
Sir Greg Knight MP <a href="mailto:secretary@gregknight.com">secretary@gregknight.com</a> or <a href="mailto:sothcottt@parliament.uk">sothcottt@parliament.uk</a>	01377 812123
Street lighting	01482 395740
Dog fouling	01482 396301
Antisocial behaviour	01482 396380
ERYC customer service centre	01482 887888
Police non-emergency	101

<p><b>SEASONED DRY HARDWOOD</b>  <b>LOGS</b>  <b>BULK BAGS - FREE LOCAL DELIVERY</b>  <b>SUITABLE FOR OPEN FIRES &amp; STOVES</b>  <b>01262 481090    07939 205737</b>  <b>BE QUICK - SUPPLIES LIMITED!</b></p> 	<p><b>EAST RIDING</b>    <b>ARBORISTS Ltd</b>  <b>Tree Care Specialists</b></p> <p>28 Main Street, North Frodingham, YO25 8LA  Tel: 01262 481090    Mobile: 07939 205737  <a href="http://www.EastRidingArborists.co.uk">www.EastRidingArborists.co.uk</a></p>	<p><b>Tree Felling &amp; Surgery</b>  <b>Tree Pruning</b>  <b>Hedge Cutting</b>  <b>Roadside Tree Safety &amp;</b>  <b>Storm Damage, Etc.</b></p> <p><b>Let Some Daylight In!</b>  <b>Call Us!</b></p>
-------------------------------------------------------------------------------------------------------------------------------------------------------------------------------------------------------------------------------------------------------------------------------------------------------------------------	------------------------------------------------------------------------------------------------------------------------------------------------------------------------------------------------------------------------------------------------------------------------------------------------------------------------------------------------------------------------	----------------------------------------------------------------------------------------------------------------------------------------------------------------------------------------------------------------------------

# *Willowgarth* Cake & Coffee Shop

**Homemade Cakes and Scones  
and Freshly Made Sandwiches**

*Cappuccino, Latte, Mocha, Flat White  
Americano, Tea, Hot Chocolate  
Milkshakes, Cold Drinks and  
Mr Moos Ice Cream*

**Monday: 9.30am – 3pm**

**Tuesday: 9.30am – 3pm**

**Wednesday: CLOSED**

**Thursday: 9.30am – 3pm**

**Friday: 9.30am – 3pm**

**Saturday: 9.30am – 3pm**

**Sunday: 9.30am – 3pm**



**99 Main Street, Beeford**

**Tel: 01262 488070**

**Find us on Facebook**



**Willowgarth Cake and Coffee Shop**



## **St Elgin's Church**

### **Rector**

Rev. James Grainger-Smith: tel.01262 488042

### **Churchwarden:**

Mrs Kathryn Kell: tel.01262 488647

### **Monthly Services**

2nd Sunday 9.30am Holy Communion

4th Sunday 9.30am Family Service

More info. about St Elgin's can be found at  
[www.achurchnearyou.com/north-frodingham-st-elgin](http://www.achurchnearyou.com/north-frodingham-st-elgin)

### **Diary Dates**

Thurs. 12th May 2022 Quiz to be held in the Village Hall. 7.30 for 8pm start, £3.00 each, no more than 6 members per team. Light snacks will be provided. There are prizes for the winning team and spot prizes & a raffle.

### **News update**

After 15 years our Rector, the Revd. James Grainger-Smith is moving on to another parish. We wish him well for his future ministry. He has been a large part of our village and we are grateful for his ministry as he has taken regular Sunday services, baptisms, weddings, and funerals. He has been part of the life of the school taking assembly and special services throughout the year for Easter, Harvest, Christmas, and Year 6 leavers as well as being a regular face at our quizzes.

His final service in the parish will be at North Frodingham on June 12th at 9.30am. This will be followed at 12.30pm by a farewell lunch in the Community Centre at Beeford for all his parishioners from the 7 churches. We are having a collection for James; if you wish to donate, please see Angela Wilkinson or put it through her letterbox - 52 Main Street, N Frod.

After James' departure if you have any enquiries, please contact Revd Shirley Hebden 01262 488284. We are able to continue with

regular services on the 2nd and 4th Sunday of the month - these will be led by Revd Susan Walker our Deanery Priest and Revd Shirley Hebden our Area Dean.

Again, we are grateful to James who has been involved in so many milestones in the lives of our village family.

Kathryn Kell

## **North Frodingham Primary School**

We were delighted with the outcome of our recent OFSTED inspection where the school was once again judged to be a good school. We were particularly proud of the Outstanding judgement for personal development which recognises the work of the school community in ensuring that our children are well prepared for the next stage of education and to become future citizens.

The Inspector found that

'From the moment pupils join North Frodingham Primary School, they are surrounded by kindness and care. Staff have a genuine interest in the pupils they work with. They aim for every pupil to enjoy their time at school, and to be fully prepared for the next stage of education when the time arrives.'

This comment and the whole report are a real testament to the hard work and dedication of the fantastic staff, governors, parents, and children.

The children were a big part of the inspection process and were able to explain to the OFSTED team just what makes North Frodingham Primary School so special. We were all very proud of each one of them.

If your child is due to start school with us or you would like to know more about places at your local village school, please contact the school office on 01262 488227.

Michelle Bell

# Driffield Navigation Trust

In aid of the restoration and upkeep of the historic Driffield Canal



Driffield Navigator can carry up to 10 people

## Boat Trips on Driffield Canal

Depart from Frodingham Landing

Experience beautiful countryside and wildlife not seen from the roadside.

New for hire at Frodingham Landing: Family paddleboard,  
canoe and rowing boat with or without engine

For more information contact 01262 488599/07770 937772 or 01377 270508 or visit [www.driffieldnavigationtrust.org](http://www.driffieldnavigationtrust.org)

## COOKERBURRA® OVEN CLEANING SERVICES

Amazing localised service based in Driffield that's  
guaranteed to have your cooker looking like new  
again!



**OVER 10,000 COOKERS  
CLEANED IN 14 YEARS**



**01262 488618 / 07889 099656**  
**cookerburra@hotmail.com    www.cookerburra.co.uk**



# Londis



*Beeford*



## SHOP OPENING HOURS POST OFFICE HOURS

MONDAY	6:30AM - 7:00PM
TUESDAY	6:30AM - 7:00PM
WEDNESDAY	6:30AM - 7:00PM
THURSDAY	6:30AM - 7:00PM
FRIDAY	6:30AM - 7:00PM
SATURDAY	7:00AM - 7:00PM
SUNDAY	8:00AM - 1:00PM

9:00 AM - 5:30 PM
9:00 AM - 5:30 PM
9:00 AM - 5:30 PM
9:00 AM - 5:30 PM
9:00 AM - 5:30 PM
9:00 AM - 12:30PM
CLOSED

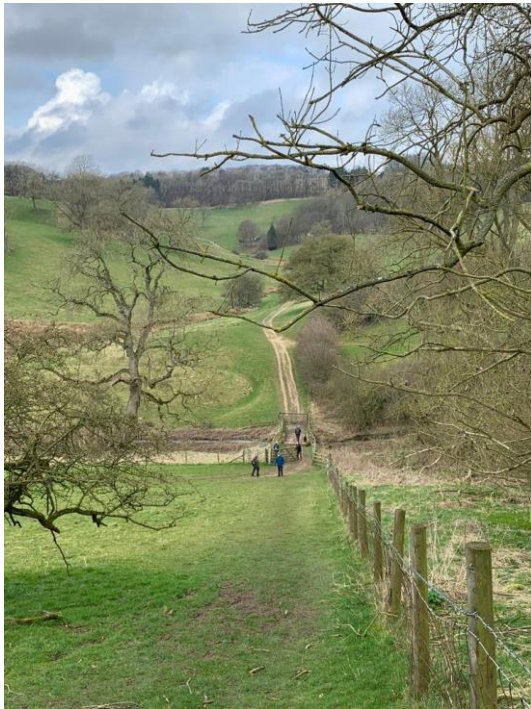


Everything you  
expect from a local  
store and more!





# WOLDS WANDERERS



A favourite walk was revisited in March, starting from Millington and heading over to Great Givendale. A bright early Spring day but a stiff wind which drove us on beyond the church to find a more sheltered lunch spot. We were surprised and thrilled to see a pair of goosanders on the Givendale pond and we also had good sightings of nuthatches.

**Photos of the descent into Whitekeld Dale and at Givendale thanks to Barbara**



The April walk from Lowna Bridge took us along the River Dove and a display of wild daffs to match those further up at Farndale but without the crowds (**photo left thanks to Ann**).

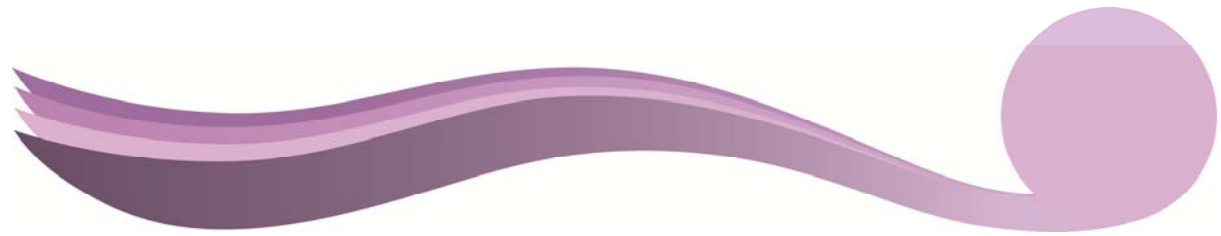
Walking up onto Harland Moor we found the perfect lunch spot overlooking Farndale and across to Blakey Ridge.



A beautiful sunny Spring day and a (mostly) moderate walk with daffodils throughout the woods followed by superb panoramic views once we were up on the Moor made for a very satisfying walk.







# The West-Gate Clinic of Osteopathy and Complementary Therapies

Proprietor  
Irene Bradbury

WE OFFER A WIDE VARIETY OF TREATMENTS TO SUIT YOUR  
INDIVIDUAL REQUIREMENTS

Osteopathy

Remedial Massage

Nutritional Therapy

Ear Candling

Sports Injuries

Cranial Osteopathy

Hypnotherapy

Professional Foot Health Care

Aromatherapy Massage

Reflexology

Swedish Massage

Indian Head Massage

Hot Stone Therapy Massage

Acupuncture for Pain Relief



## WE DON'T JUST TREAT BACKS!

Appointments 01377 256835 or call at the Clinic

28 West-Gate Drifffield YO25 6SY

[www.thewest-gateclinic.com](http://www.thewest-gateclinic.com)

[info@thewest-gateclinic.com](mailto:info@thewest-gateclinic.com)

All therapist are fully qualified and registered with their own professional body

## Local Village Joiner/ Builder Handyman

All UPVC work/repairs

Glass Replacement

No Job Too Small

Ring **John** on mobile 07971727694  
or 01262 488736



### Additional noticeboard in place



# atlas

## EMBROIDERY

**07813 129462**

Embroidery and Printing

*Personalised clothing  
that gets you noticed.*

T Shirts  
Polos  
Hoodies  
Sports Kits  
Workwear



Businesses  
Clubs  
Schools  
Teams  
Events

[www.atlasembroidery.co.uk](http://www.atlasembroidery.co.uk)  
34 Main Street, North Frodingham  
Email: [ian@atlasembroidery.co.uk](mailto:ian@atlasembroidery.co.uk)

### Please support the new post office service

We now have a post office service every  
Wednesday in the Community Centre  
between 12.30pm and 1pm.



Please support the advertisers in this newsletter



## My epic charity swim by Catherine Ludolf

This summer I am taking on the ultimate challenge in swimming. I will be swimming the Channel for Aspire (a UK spinal injury charity). I've always been a wetsuit warrior, a fan of warm water and calm lakes. So, what better way to raise money for an amazing charity than to force myself into cold water for months on end and then swim to France?

The challenge of swimming the Channel is not to be underestimated.

- The English Channel is 21 miles.
- The temperature of water in a swimming pool is 27 degrees, whereas the Channel is more like 16-18 degrees.
- The swim will be observed and verified by the CS&PF so will be following strict Channel swim rules.
- We cannot wear a wetsuit for this swim
- The Channel is the busiest shipping lane in the world with 800 tankers and 200 ferries etc passing through a day.
- Six swimmers will swim in rotation (one hour each) until we touch down in France.
- The fastest relay swim crossing is 6 hours 52 minutes by the US National Men's Swim Team in 1990. The average time for an English Channel relay swim crossing is 12 hours and 45 minutes

and 11 seconds.



**CATHERINE AFTER A SEA SWIM**



**QR CODE FOR MORE INFORMATION**

### Why am I swimming for Aspire?

6 people a day are paralysed by spinal cord injury. It can happen at any time, anywhere and to anyone. Many spinal injuries happen when people are living their lives and minding their own businesses - a fall, a traffic accident, or sports accidents. The consequences of spinal injury can be huge and varied. Not just leaving people paralysed or in wheelchairs, but also impacting people's mental health, access to housing and ability to work. Aspire provide support and advice to help people get their lives back together - legal advice, support accessing healthcare and helping people access benefits or houses.

I will be documenting my training, cold water dips and across social media (@Channel\_Dreams on Instagram). I also have an online sponsorship page [www.justgiving.com/fundraising/channel-dreams](http://www.justgiving.com/fundraising/channel-dreams). Any donation, no matter how small would be really appreciated and would make a massive difference to people experiencing spinal injury.

Please support the advertisers in this newsletter

## STEPHEN HARRISON

### *Family Butchers of Quality*

We accept major credit cards

Tel: Beeford 01262 488538

Mob: 07766 176382

Local fed beef, lamb & pork.

Large discounts for the caterer  
and on all freezer packs.

Telephone orders can be  
delivered.



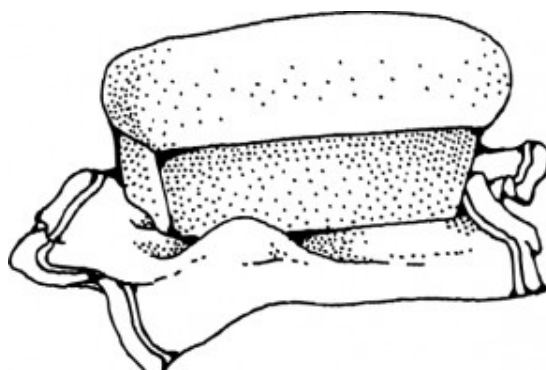
Home cooked meats.  
Homemade pork  
pies, sausages,  
burgers & BBQ packs.

In addition to the established  
business, Tracy is starting a new  
enterprise

## Opening Soon

### T.M. Wood

### *Artisan Baker*



### Chris Newland

- Motor Engineer -

To Rear of 77 Main Street

North Frodingham Driffeld YO25 8LG

**ALL MECHANICAL REPAIRS AND SERVICING**

Telephone: 01262 488344



*Diagnostics*

*Tyres*

*Batteries*





# PENEMENT DESIGN

Home to a small but perfectly formed  
**FREELANCE GRAPHIC DESIGNER,**  
**Lorraine Wood**

I specialise in creative design and visual communication, creating logo designs, stationery, leaflets, brochures and much more...



WANT TO SEE A LITTLE MORE?

[www.penementdesign.co.uk](http://www.penementdesign.co.uk)

GIVE ME A CALL ON:

**07970538393**



The children learn about bird boxes at school



## C S SERVICES

All aspects of groundwork and garden works carried out

Paving and Driveways

Repair, Renew or New Fencing

Grass Cutting

Hedge Trimming

Power Wash Drives Patios

Call Craig for a free quote

**07710550650**



## History Group

Our second meeting of the year found us in Edwardian times in Hull with extracts from a magazine of its time called "The Hull Lady".

Our speaker was Michelle Beadle.

She gave a great account of what the magazine had to offer at that time, including architecture, Hull's leading ladies, cookery, fashion and theatre. A few articles took some of us down memory lane from when we were children and showed us how times had changed especially for women.

Our next meeting is Thursday 19th May at 7.30pm in the social centre, and the topic is Wansford.

All welcome.

Hope to see you there.

Anne

## Leven & Beeford Medical Practice

have recently set up a

## Patient Participation Group

*If you would like to:*

**Contribute to the continuous improvement of services**

**Help improve communication between the practice and its patients**

**Help patients to take more responsibility for their health**

**....if you are aged 16 or over,**

**We would like to hear from you**

**Telephone: 01964542155 or 01262 488234 for further information**



## Medibus and Dial a Ride

Medibus contact number: 03456 445959

Medibus email: [passengerbookings@eastriding.gov.uk](mailto:passengerbookings@eastriding.gov.uk)



Mr P.L. TURNER  
Local Builder  
New Development  
Conversions  
Extensions etc

Knutwood  
26A Main Street  
North Frodingham  
YO258LA  
01262 488958



## **East Riding of Yorkshire Council Update: Helping the Ukraine**

News of the harrowing situation in the Ukraine is to be found or heard in every media outlet and is something that has touched the hearts of millions of people.

We thought it might be of interest to update you on what is happening in our area. At the time of writing there are 82 households in the East Riding matched with around 170 Ukrainian residents. The first Ukrainian residents due to arrive through this scheme should be here on 10<sup>th</sup> April.

ERYC are currently undertaking DBS, accommodation and safeguarding checks on all residents that have agreed to host a Ukrainian and have found a match with a Ukrainian resident. All host households are being given advice to support their guests with school admissions, access to healthcare, translation services, support with benefits or job applications and so on.

The Council has set up a dedicated private Facebook group for host families and has developed a welcome website aimed at both host families and their guests. We have also worked with Hull City Council to set up a helpline manned by Ukrainian, Russian and English speakers to provide support and advice.

For those residents that may not be able to offer accommodation, but would still like to offer help, the best way to support the cause is to donate to the national Disasters Emergency Committee (DEC) charity, which is a coalition of 15 leading UK charities working collectively to provide emergency aid and rapid relief to civilians suffering during the conflict.

More information on all of this can be found on our website: <https://www.eastriding.gov.uk/living/support-for-ukraine/>

It will not surprise you to hear that the council has been overwhelmed with the kind offers and generosity of our residents who want to help with this cause.

## **Mature Mayhem**

Our weekly get-togethers are each Friday from 2-4pm in the Village Hall, where we chat, do gentle exercises and play games using the mind and body. A group meeting would not be the same without a cup of tea or coffee and a biscuit, so that is also provided. It doesn't matter if you are new to the village or have lived here all your life, if you would like to come and join us, you are most welcome.

## **Paperback Book Swap**

If you would like a book to read, please come along to see our extensive collection. Hopefully there will be something of interest for you. The book swap runs at the same time as Mature Mayhem - each Friday from 2-4pm.

Joan



Straight Lane, Beeford, Driffeld  
East Yorkshire. YO25 8BE

[01262 481005](tel:01262481005)

[beeford@prioryvet.co.uk](mailto:beeford@prioryvet.co.uk)

## Priory Vets

Dedicated and affordable vet care in Bridlington,  
Beeford and Driffeld

VIDEO VET

EMERGENCIES

At Priory Vets we aim to provide the highest standard of professional veterinary care with dedicated and caring personnel - in a friendly environment. If you have a problem with any aspect of the service you or your pet have received, please do not hesitate to call in or telephone us. We are always here to listen, and will assist in any way we can.

## New Puppy?

No need to go to the pet shop to spend money  
buying things you may not even need

Through extensive market research, we have designed for you a simple bespoke catalogue of amazing products containing ALL you will possibly need to successfully settle your puppy into their new home.

### IMPORTANT NOTICE

During these difficult times we ask that you **CONTACT US** ahead of any requirement to visit the practice.

For any routine enquiries or requests for food and repeat medications please email us if at all possible.

We are doing our best to continue to provide services, but unfortunately due to the current situation these are reduced. Bridlington is remaining open daily, but Driffeld and Beeford will have varying opening hours. Please contact us to find out when we will be next available.

Please support the advertisers in this newsletter



Sales with  
Service  
for 74 Years!



Specialising in Sales, Service & Hire of Agricultural & Horticultural Machinery for 74 Years.

We have an extensive range of Equipment, Parts & Accessories available in our Store & Showroom. With our sales department onsite we offer expert advice, enabling us to find the right machine for the job!

Our well equipped workshop and skilled mechanics enable us to carry out servicing & repairs on Agricultural & Horticultural equipment on & off site.

At Cherrys we have a self use hire department with equipment for your every need, from Hedgecutters and Compact Tractors to a 6T Digger we have it all!

Main Street, North Frodingham,  
Driffield, YO25 8JU

01262 488275

[www.cherrycountryhardware.co.uk](http://www.cherrycountryhardware.co.uk)

Email: [service@cherryhire.co.uk](mailto:service@cherryhire.co.uk)



Find us on Facebook!

**Eliza Tinsley**  
Superior quality since 1851

**TORO**

**DRAPER**

**StocksAG**

**W Winton Agri-Machinery**

**VAP VAPORMATIC**

**brüder**

**WEIDEMANN**  
designed for work

**KIOTI**

**LE CHAMEAU**  
1927

**ABBAY MACHINERY**

**KÄRCHER**

**HAYTER**  
MAKERS OF THE FINEST MOWERS

**GRASS HOPPER**  
IT'S SO MUCH MOWER

**Snickers WORKWEAR**

**STIHL**

**ISEKI**

**POLARIS**

**Larrington Trailers**

**FLEMING**