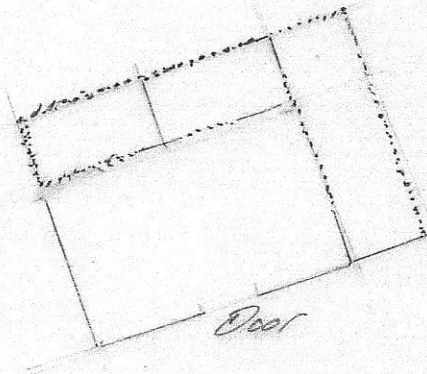


Little Swordale Farmstead.
Bonar Bridge NH6292 9012.
HER 19296. Canmore 91379.

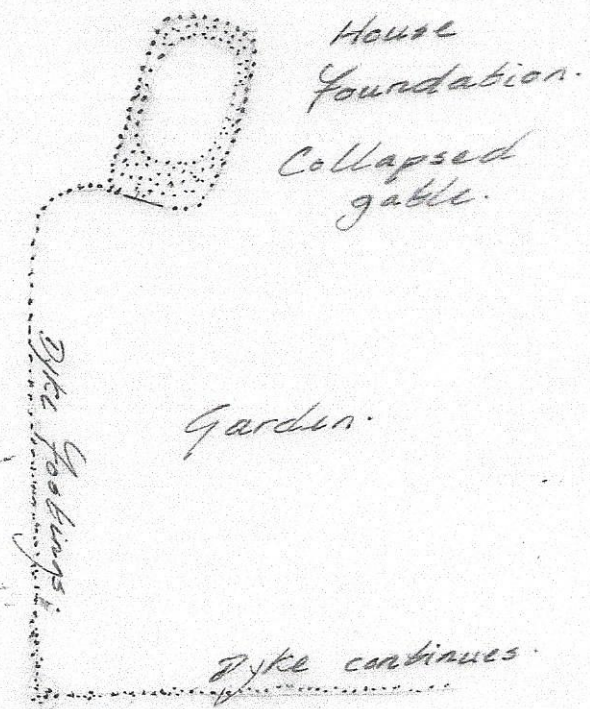


18/19thc Farm
20thc ? Stable.

NOSAS survey
20-4-2024.
Scale 1:500

0 5 10 15 20m.

D.W. Ross



well.



Building Foundation
obscured by gorse & bracken.