

a Farrar skywalk

SP9.43B Deanie Ridge

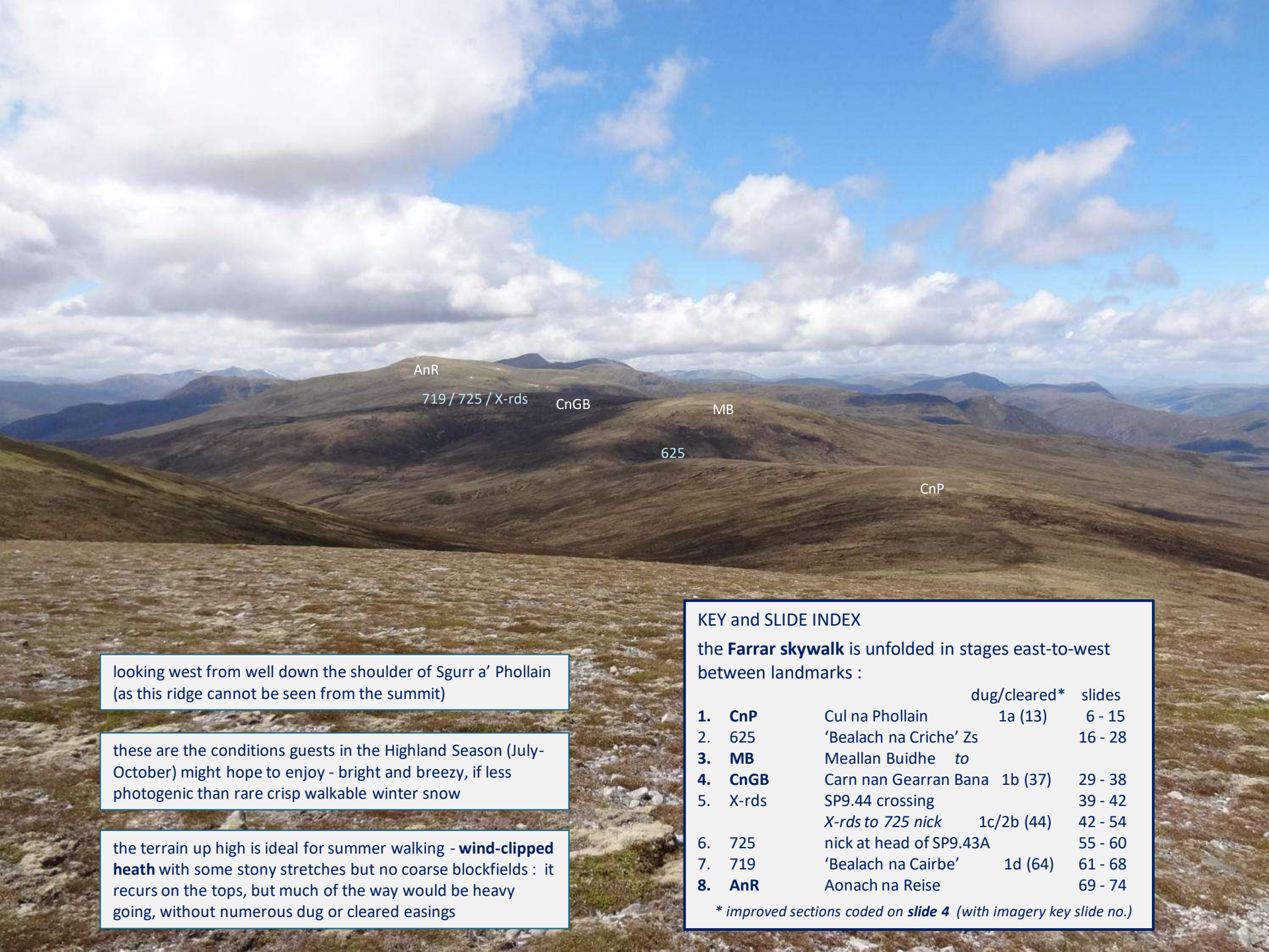
David Jarman

- mountain path research -
Ross-shire Scotland
davidjarman914@gmail.com

June 2026

looking west from Beinn a' Bhathaich Ard, the eastmost peak of
the Western Glens, to the Farrar Munros **Index** : slide 2





looking west from well down the shoulder of Sgurr a' Phollain (as this ridge cannot be seen from the summit)

these are the conditions guests in the Highland Season (July-October) might hope to enjoy - bright and breezy, if less photogenic than rare crisp walkable winter snow

the terrain up high is ideal for summer walking - **wind-clipped heath** with some stony stretches but no coarse blockfields : it recurs on the tops, but much of the way would be heavy going, without numerous dug or cleared easings

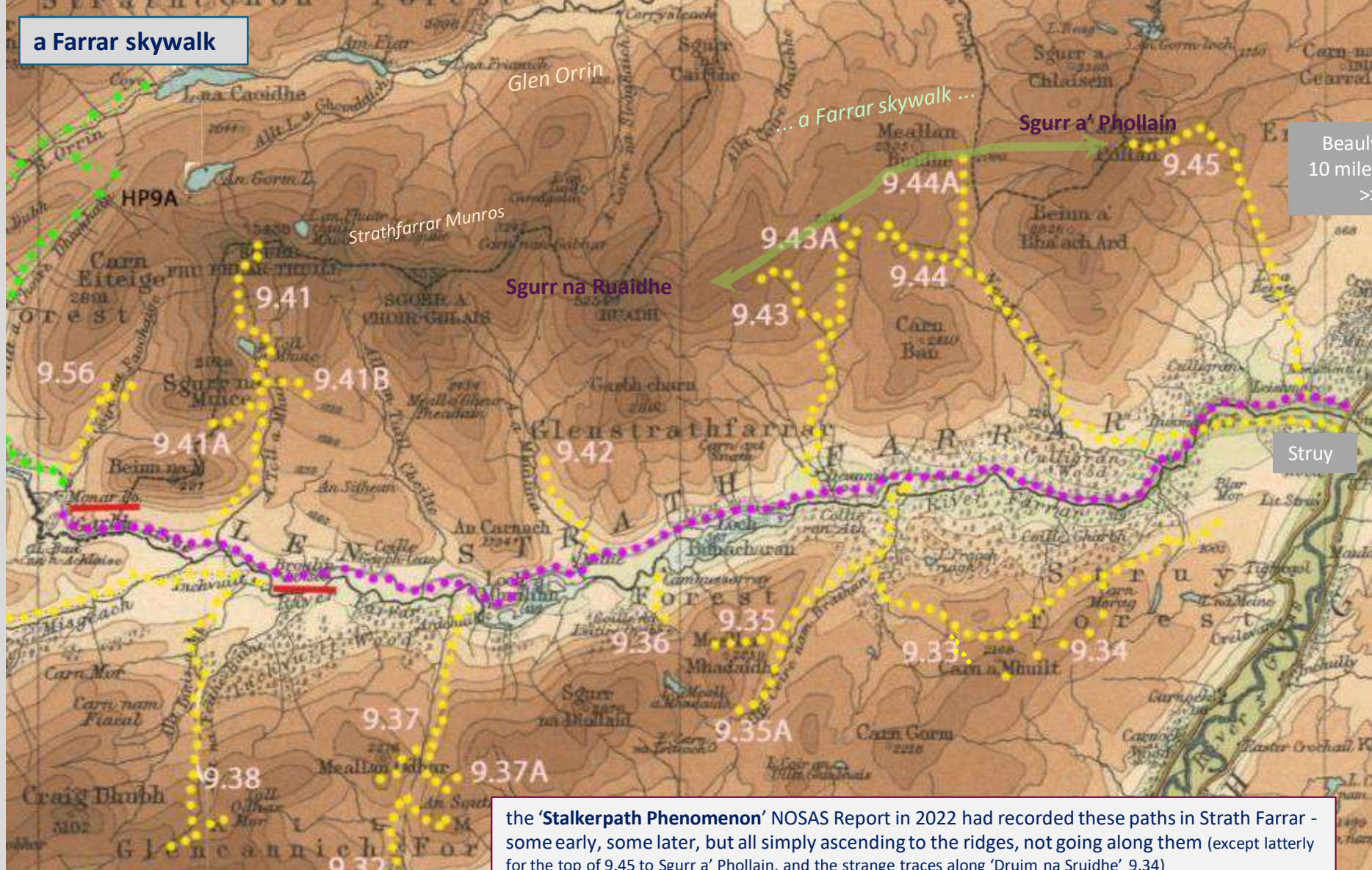
KEY and SLIDE INDEX

the **Farrar skywalk** is unfolded in stages east-to-west between landmarks :

		dug/cleared*	slides
1.	CnP	Cul na Phollain	1a (13) 6 - 15
2.	625	'Bealach na Criche' Zs	16 - 28
3.	MB	Meallan Buidhe	to
4.	CnGB	Carn nan Gearran Bana	1b (37) 29 - 38
5.	X-rds	SP9.44 crossing	39 - 42
		X-rds to 725 nick	1c/2b (44) 42 - 54
6.	725	nick at head of SP9.43A	55 - 60
7.	719	'Bealach na Cairbe'	1d (64) 61 - 68
8.	AnR	Aonach na Reise	69 - 74

* improved sections coded on **slide 4** (with imagery key slide no.)

a Farrar skywalk



the 'Stalkerpath Phenomenon' NOSAS Report in 2022 had recorded these paths in Strath Farrar - some early, some later, but all simply ascending to the ridges, not going along them (except latterly for the top of 9.45 to Sgurr a' Phollain, and the strange traces along 'Druim na Sruidhe' 9.34)

on the north side, hints of unmapped links between the four closely-spaced path-heads SP9.43-44 were being picked up, until by May 2026 a new entry was created : **SP9.43B Deanie Ridge**

only in June 2026 did a full traverse reveal near-continuity with SP9.45 - a 'Farrar skywalk'

a Farrar skywalk

- no link path along the ridge ever mapped*
- but several 'easings' suggest the intention:

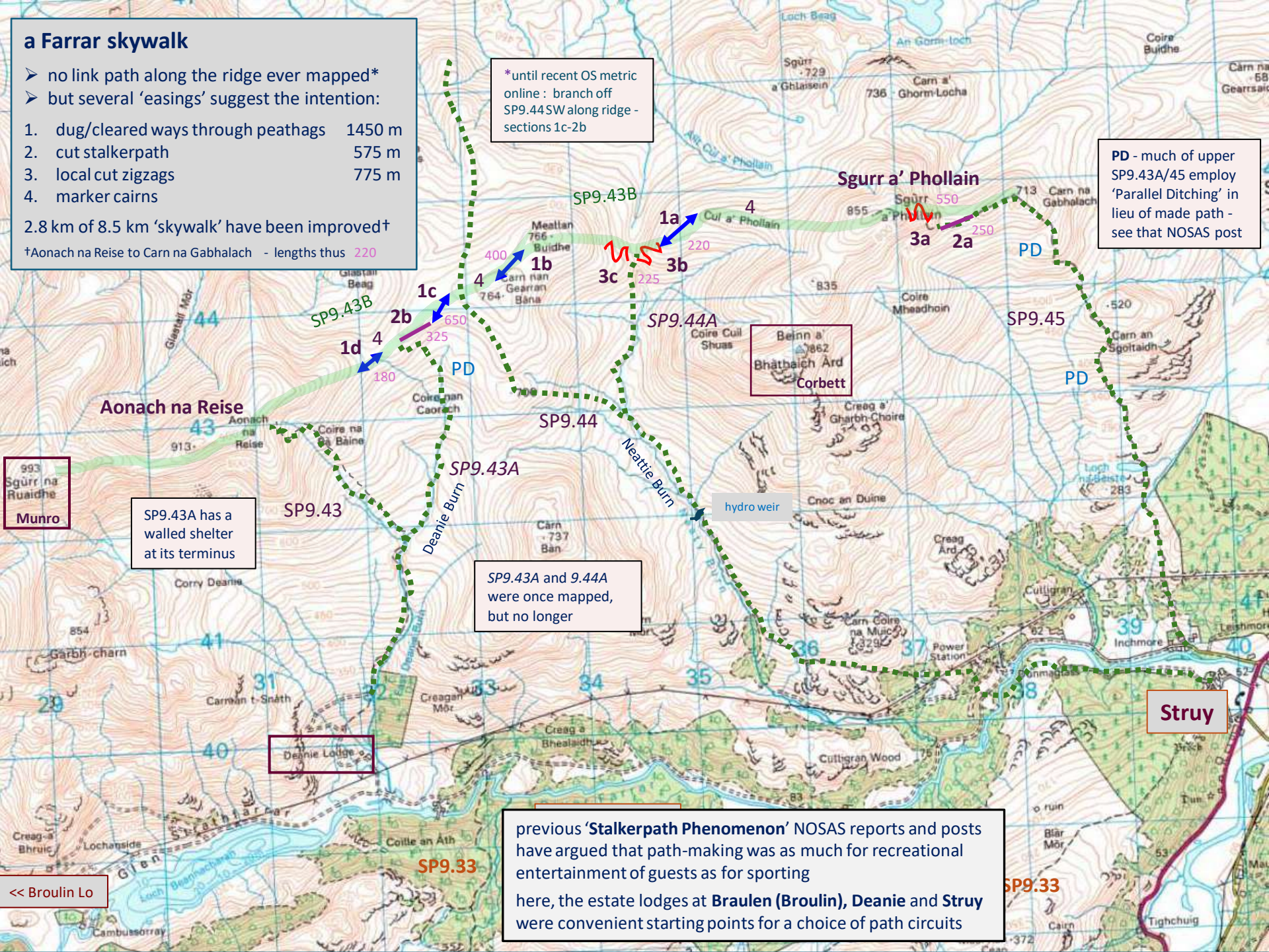
1. dug/cleared ways through peathags 1450 m
2. cut stalkerpath 575 m
3. local cut zigzags 775 m
4. marker cairns

2.8 km of 8.5 km 'skywalk' have been improved†

†Aonach na Reise to Carn na Gabhalach - lengths thus 220

*until recent OS metric online : branch off SP9.44 SW along ridge - sections 1c-2b

PD - much of upper SP9.43A/45 employ 'Parallel Ditching' in lieu of made path - see that NOSAS post



Munro

SP9.43A has a walled shelter at its terminus

SP9.43A and 9.44A were once mapped, but no longer

Struy

previous 'Stalkerpath Phenomenon' NOSAS reports and posts have argued that path-making was as much for recreational entertainment of guests as for sporting here, the estate lodges at Braulen (Broulin), Deanie and Struy were convenient starting points for a choice of path circuits

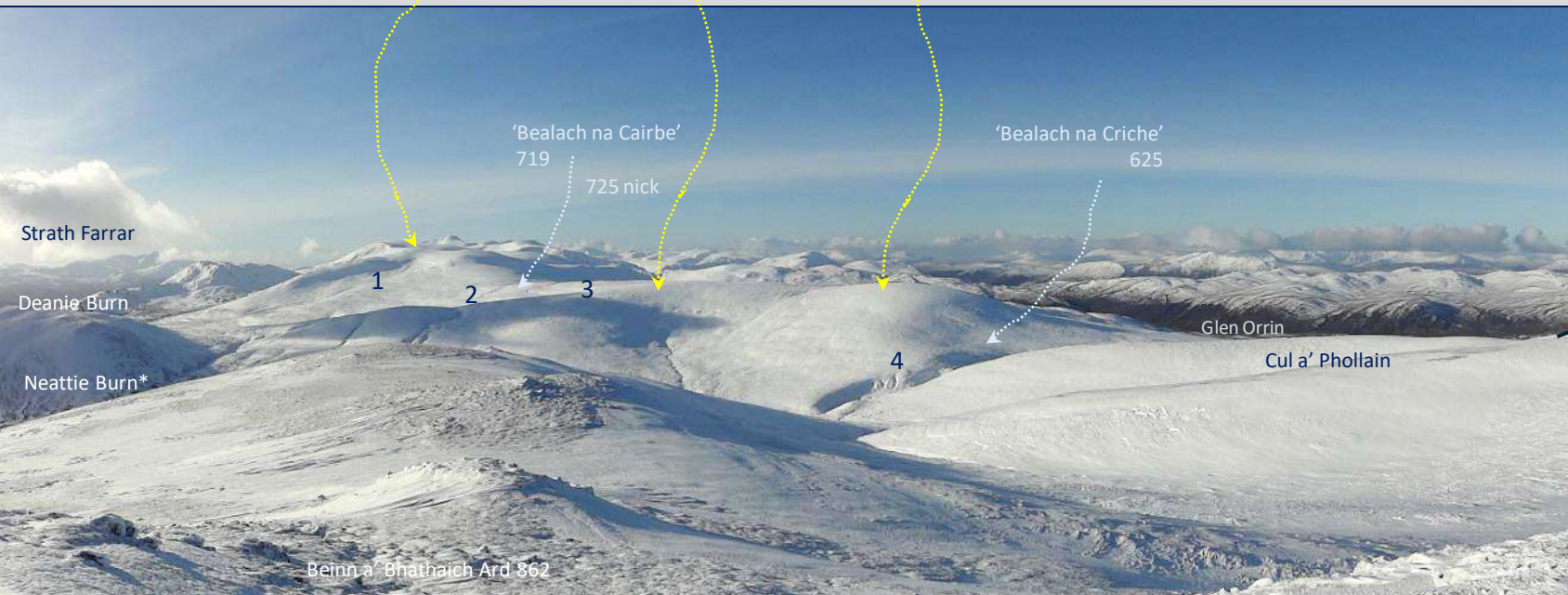
<< Broulin Lo

Sgurr na Ruaidhe 993

Aonach na Reise 913 - bookends the Farrar skywalk with Sgurr a' Phollain

Carn nan Gearran Bana 764

Meallan Buidhe 766 - are the midway hills, plateau and dome



Sgurr a' Phollain
855

- eastern bookend
(1 km)

5

- zigzags up east
proW (inset)
- see separate ppt
for **SP9.45 / PD 3**
- including cut
path approach **2a**

the broad ridge stays above 700m for 7 km between bookends, save for a 1 km dip across the 625m nick

- the 'skywalk' is aided by a largely unmapped cleared way
- and gained by remains of five stalkerpaths from Strath Farrar :

stalkerpaths coming up to the ridge :

- | | | |
|----|---------|--------------------------------------|
| 1. | SP9.43 | Deanie Burn |
| 2. | SP9.43A | Deanie Burn NE † |
| 3. | SP9.44 | Neattie Burn * |
| 4. | SP9.44A | Neattie Burn NE † |
| 5. | SP9.45 | Sgurr a' Phollain (from Farrar gate) |
| | SP9.43B | Deanie Ridge 'skywalk' |

*original spelling - OS has Neaty † not on current OS maps

beyond Aonach na Reise, the 'Farrar Four' Munros offer fine high-level ridge-walking, with no need for way-making - but mid-level ridges are much more arduous, with thick tussock grass, heather, moss, and peat



zigzags **3a Z=8**

before this June 2026 'skywalk', only one small indication of improvement east of MB had been found in the field or on imagery - an unmapped short zigzag flight this side (east) of nick 625

2

the revelation - wholly unsuspected - comes between CnP and 625

the arrow is the natural 'height of land' line to the nick

athwart it (brown line) is the edge of a dense tussock sward ... (next slide)



2

CnP

1

1

the broad shoulder of Cul na Phollain (725m) has a slight dip supporting wetter tussock and peat

there are premonitions of 'way-cutting' through the shallow peat, but these are probably deer trods exploited by occasional ATVs

looking west from well down the shoulder of Sgurr a' Phollain

dug/cleared ways through peathags 1a 220 m



tip of Sgurr a' Phollain bookend
just visible behind its west brow

CnP

looking east

... athwart the desire line (arrow)
is the edge of a dense tussock sward
(dashed line)

the walker is tempted to tackle the
tussock, as so often, but keeps being
deflected right, slightly off-slope,
hoping for a chink - a deer trod maybe

2



625

looking SW

... until, astonishingly, an entrance opens,
with a dead-straight way through - dug
from the feet-deep tussock-covered peat



625



the dead-straight way is only dug through the peat for the first 30 m

it then becomes a shallow scrape through the tussock grass to the periglacial tundra surface of stony grit

a well-chosen line - could so easily have been missed





CnP

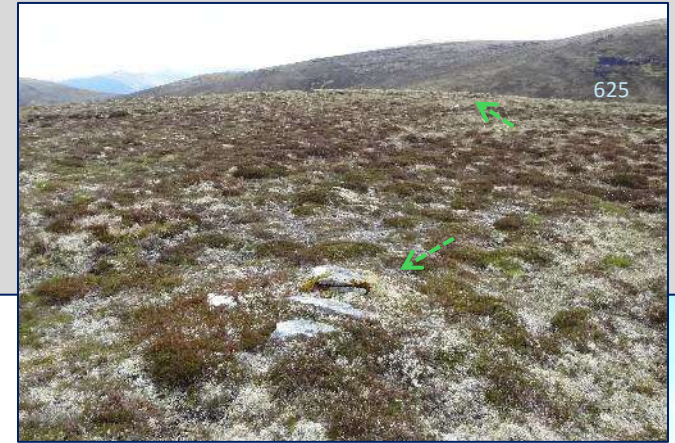


625

the shallow scrape is framed by banks - the long-surviving tussock turves ?
- which may have worsened drainage...



CnP



625

the long straight scrape (>100 m) ends messily, with a muddle through to the next rise of bare ground
- which has traces of cairns across it (inset)
to a second dug stretch before the 625 nick



625

CnP

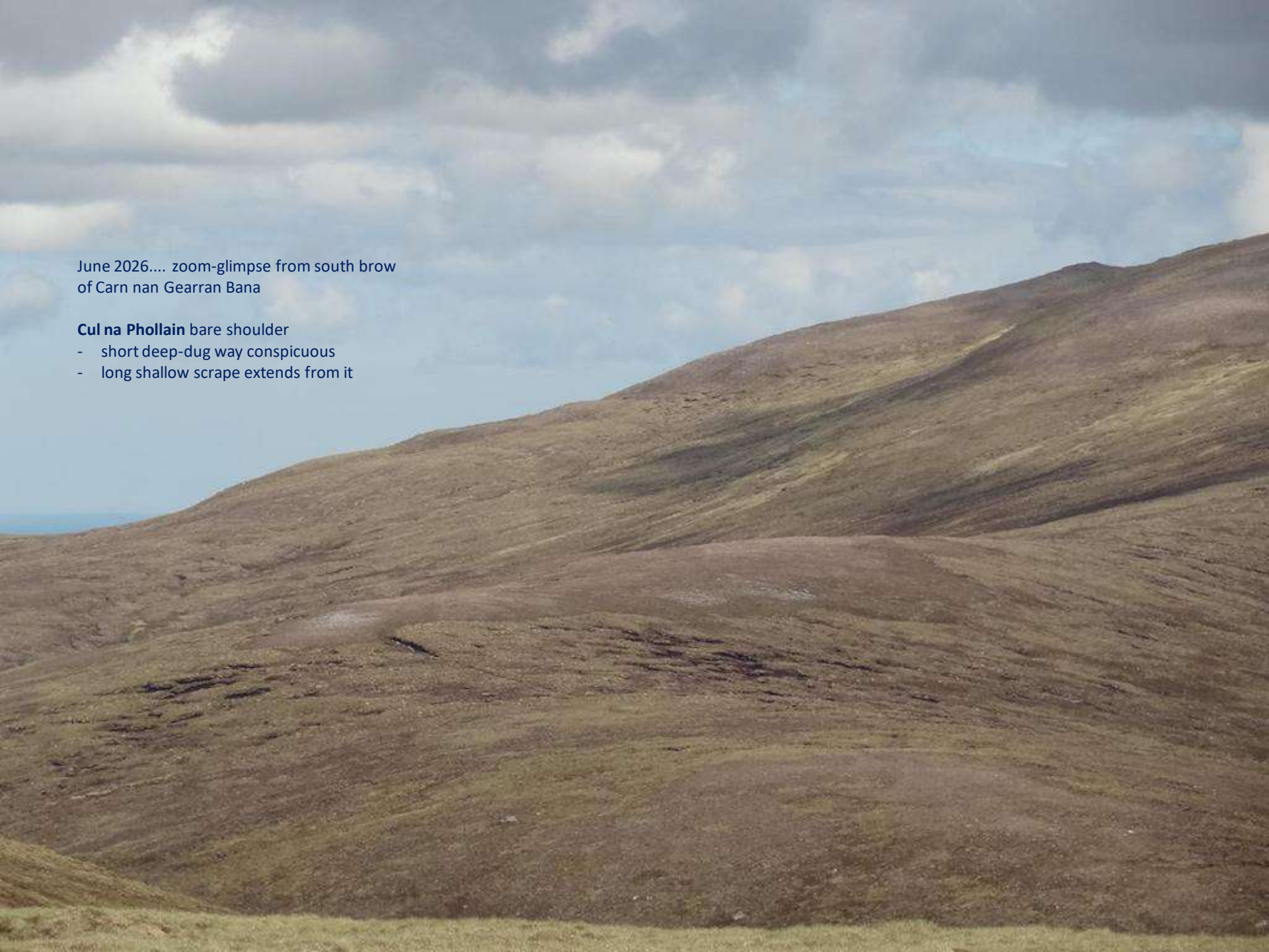


oh dear, the second dug stretch has not gone so well - is no longer followable : the price of digging across a shallow depression, with no sign of drainage being attempted





- a) short deep-dug way through peat - 30 m
- b) long shallow scrape - 100 m+ - obscure exit
- c) failed scrape - non-linear

A landscape photograph showing a hillside with a deep-dug way and a shallow scrape. The sky is cloudy. The foreground is a grassy slope, and the background shows a larger hillside with a deep-dug way and a shallow scrape.

June 2026.... zoom-glimpse from south brow
of Carn nan Gearran Bana

Cul na Phollain bare shoulder

- short deep-dug way conspicuous
- long shallow scrape extends from it



nick 625 is here termed '**Bealach na Criche**' after the Allt na Criche on its north, *criche* being a boundary - and the old county boundary passes through it

- strange never to have been named, given it is the major feature along this interfluve (even on Peter May's 1750s estate map)

it has to be crossed



'Bealach na Criche' 625 is a glacial meltwater overflow channel, one of several southwards from a temporary 'Orrin lake', incising the ancient gentle north-side bay by ~25 m

- it adds spice to the smooth preglacial land surface
- and to the fashioning of a 'skywalk' along it

AnR

MB

CnP

625

BBA west ridge



this prominent 'tor' (akin to Cairngorms or Dartmoor granite, but here on schist) was mapped as a 'possible shieling hut' on ancient monuments - at 750 m up - until this visit (it is marked by OS on 6-1, but as a rough rectangle)

March 2022 zoom-glimpse from south brow of
Carn nan Gearran Bana....

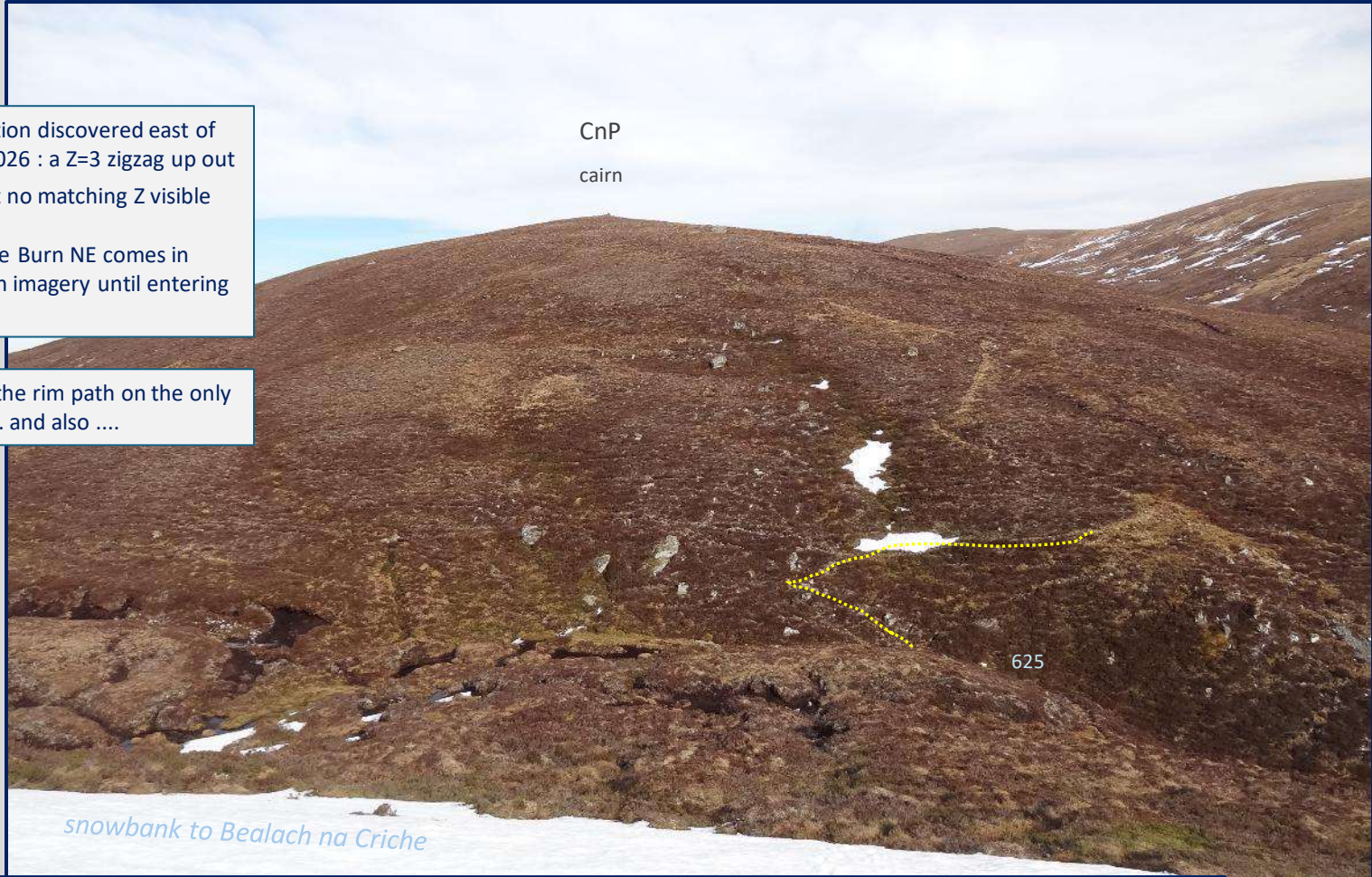


this is that sole small intervention discovered east of Meallan Buidhe before June 2026 : a Z=3 zigzag up out

- discernible on imagery, but no matching Z visible the opposite side
- the head of SP9.44A Neattie Burn NE comes in along the west rim, clear on imagery until entering the col

CnP
cairn

the fat snowbank blotted out the rim path on the only previous visit (March 2022) and also



... the fat snowbank had blotted out the rim path on the only previous visit (March 2022) and also *

... the merest scratch aslant the opposite side of the nick

MB

Neattie
Burn

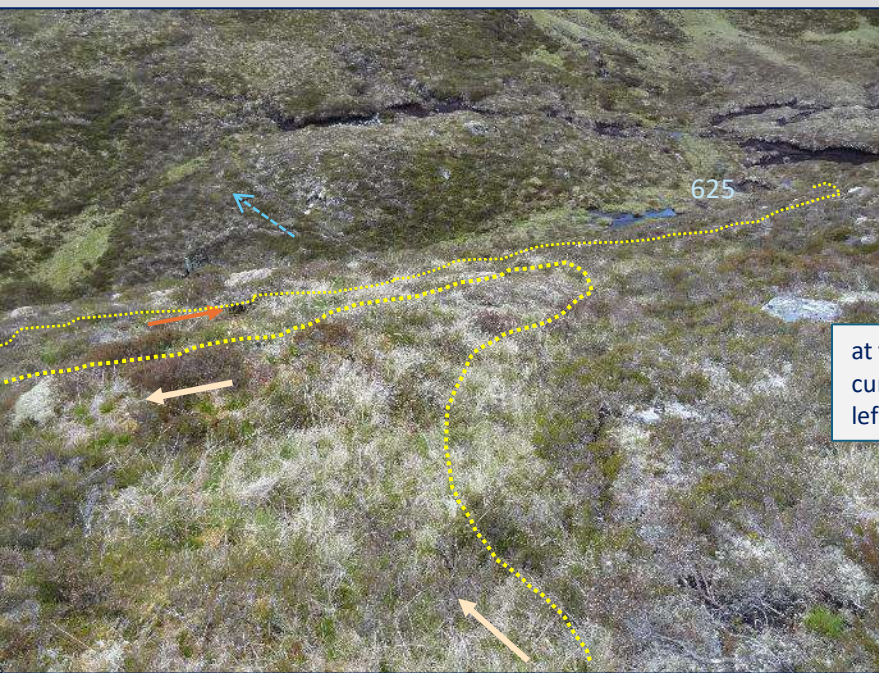
SP9.44A

625

from the last bare heath of Cul na Phollain, a few cairns guide the eye, then give out
- but after descending a messy slope some way, the head of that glimpsed Z is found, a moss-filled bend hinting that it might have risen further (and would be a boon if it did)

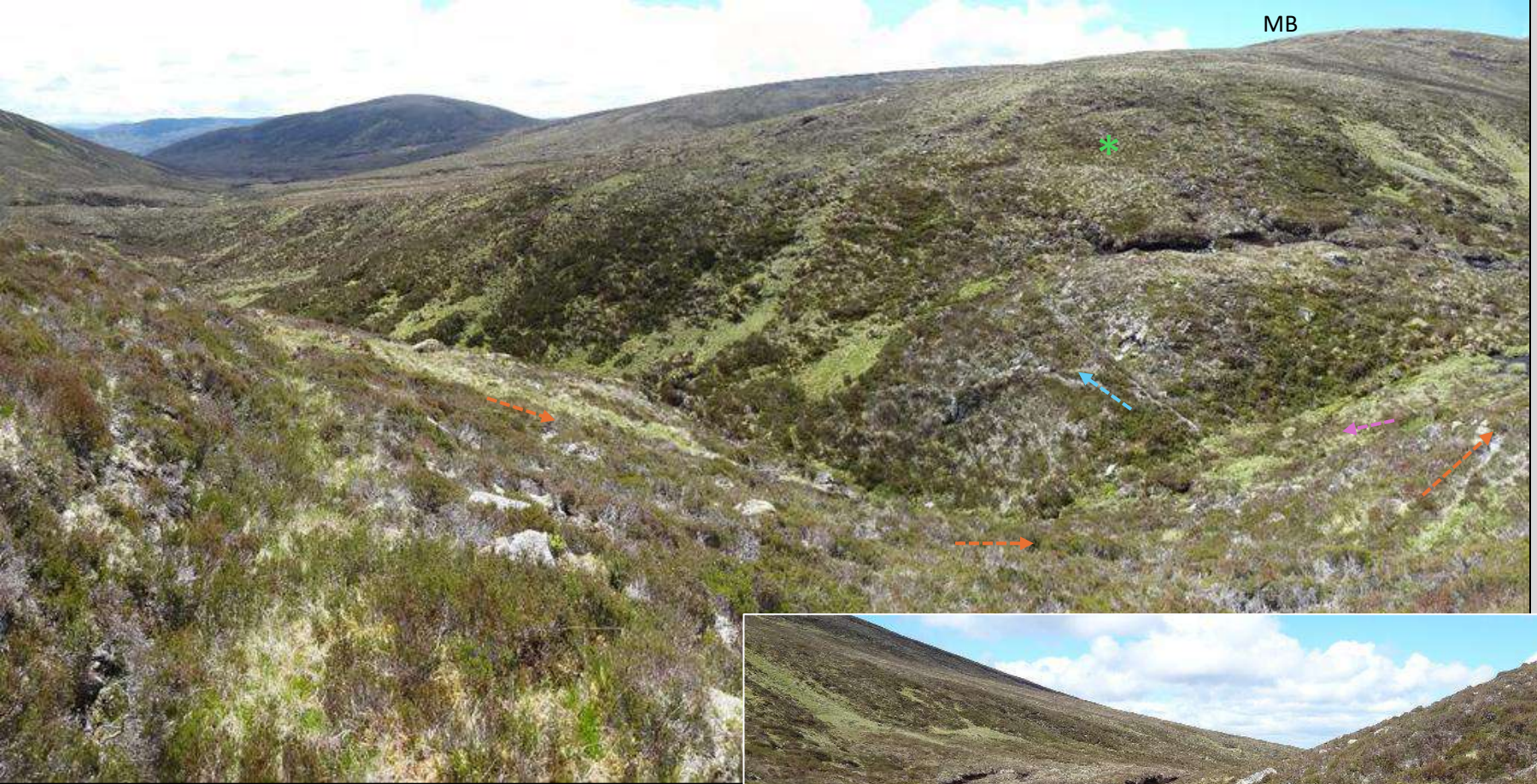


the upper zigzag on the east side, as basic as they come



at the end of the long zig (upper picture - arrowed), there is a curious squiggle to help it round the break of slope and zag left, before entering the near-level traverse (orange - next)

on the opposite side, a hint of a slanting scrape out of the nick floor (blue)



MB

crossing **Bealach na Criche 625**

the lower zigzag on the east side (from the squiggle)

- notched into the deepening nick flank
- rather steep at the break of slope
- then an almost level traverse (orange)
- and an almost invisible final cut in to the 'ford' (pink)

and on the opposite side

- that narrow slant out from the 'ford' (blue), now quite sharply etched
- unclear how that relates to the scratch *



625

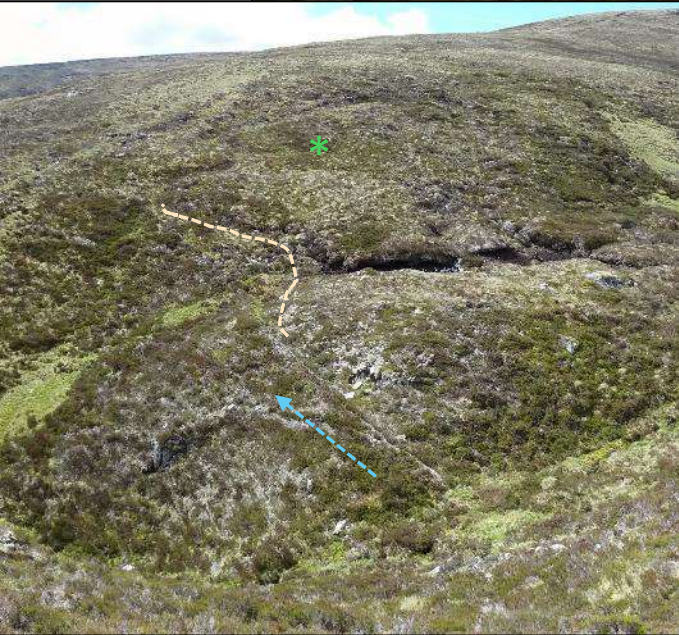


crossing **Bealach na Criche** - the 'ford'

the final zag down and first zig out
opposite are now clear, probably cut
to standard six-foot width

the 'ford' appears built up as if a check-dam,
even though there is no stream - a causeway
to ease the crossing

here, ponies bearing guests, perhaps led by
ghillies, might find rare shelter on this exposed ridge



a zigzag Z=3 up the west side is now evident,
a matching pair

there is a degraded gap (inset - pale dashes)
between the upper and lower 'scratches' - but it is
all followable as a greatly eased crossing of the nick

CnP
cairn

see *
imagery

625
Bealach na Criche

this is - believe it or not -
looking down the west-side
zigzags across the degraded
gap, from the curlicue at
the top



MB

to tie these threads together - did SP9.44A Neattie Burn NE ever join up with the 'skywalk' zigzags, as one might expect ? (and as we will see, next nick)

the SP9.44A rim cut traces to here, no further on imagery (next)

SP9.44A



T



625

and is there any link between the top twist of the Zs and Meallan Buidhe ? nothing underfoot or on imagery

the 'trench' T is a natural peat grough, as are others higher up



MB

625

CnP



SP9.44A ?

this is the only usable of four
GEarth images;
BINGmaps is no better

Google Earth

Image © 2025 Airbus



50 m

the **Bealach na Criche** Zs crossing

a possible lineament for an **SP9.44A**
connection is shown - see next

both Zs have a curlicue at the top

- west side (above - left of - green star) simply opens out onto the moor
- east side (above pink star) has hints on the ground and here (see next) of extending further

it may be a trick of the light, but the west side has a curvier corkscrew character, whereas the east is narrower and has sharper corners



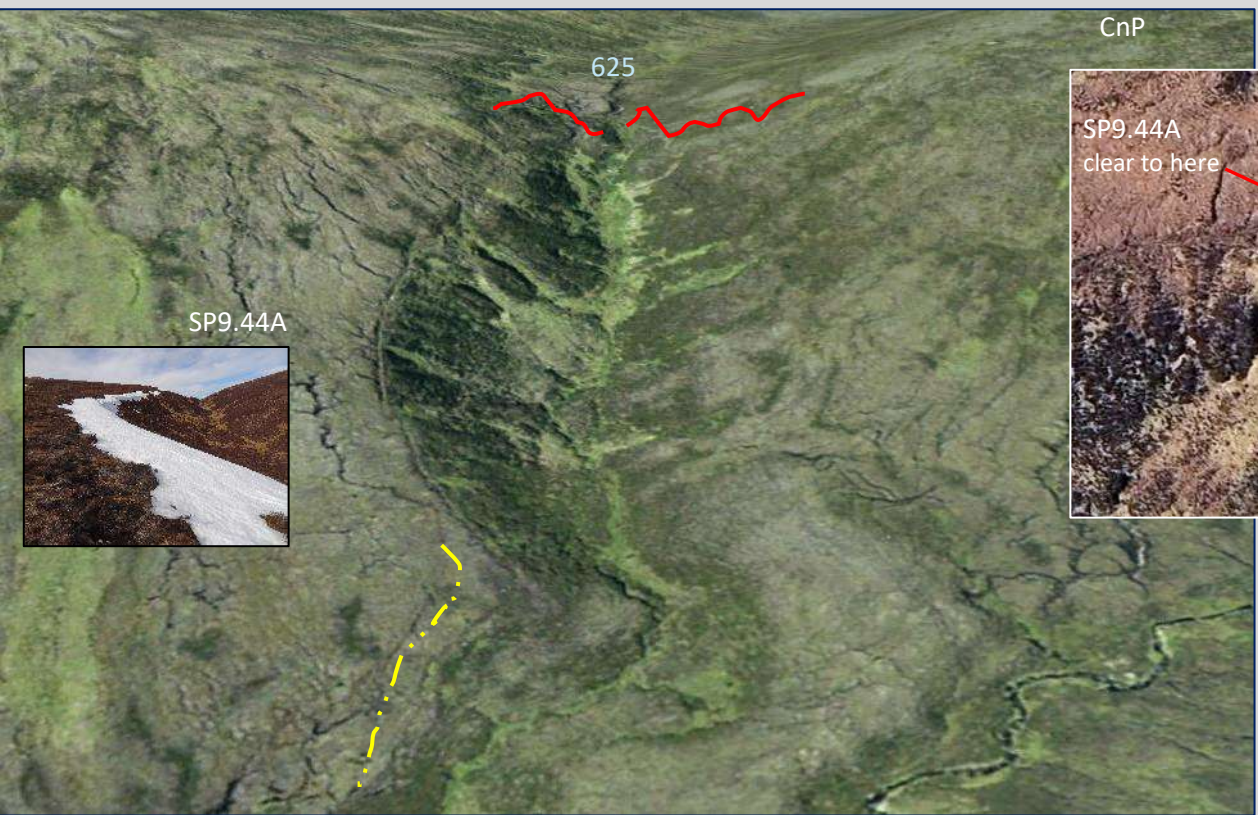
CnP

cairn



the Bealach na Criche Zs crossing

- east side (above pink star) hints of extending further - one more similar zag, possibly more, but aiming for cairn on rock outcrop



CnP

625

SP9.44A



SP9.44A
clear to here

- SP9.44A** Neattie Burn NE is clearly cut as a bench into the peat along the rim of the nick (left)
- fading out before the Zs
 - turning down into the open valley head
 - largely lost down the burn to the fork
- inset above shows two hints of a badly degraded final connection, joining the Zs midway



Beinn a' Bhàthaiùh Àrd

the 'skywalk' so far - Sgurr a' Phollain top left
>> Cul na Phollain
>> Bealach na Criche 625

from Meallan Buidhe SE shoulder



MB

CnP

625

Beinn a' Bhathaich Ard
west shoulder

the next traces of 'skywalk'
come west of **Meallan Buidhe**
(dome)

there are no traces west of
Bealach na Criche 625 up the
open shoulder to Meallan Buidhe
- perhaps easier walking then
than now

the whole of **Cul na Phollain**
here is way-made or marked

the bold hill group in middle distance is **Sgurr a' Mhuillin** (Strath Conon)



CnGB

AnR

719

the 'skywalk' to come - plateau of Carn nan Gearran Bana >> 725 - 719 nicks << Aonach na Reise
from Meallan Buidhe summit dome

CnGB

deer trods and spoor abound - but this is the only one 'not seen' all day - is why stalkers have powerful telescopes

dug/cleared ways **1b** 400 m

crossing mixed peaty tussocky wastes in the shallow dip between **Meallan Buidhe** and **Carn nan Gearran Bana**

the cut way veers off right heading for the nicks



CnGB

zoom didn't quite capture the entrance, which comes in at an angle, if seen from MB summit (arrows) - see imagery (next)



CnGB

AnR



MB



entrance angle better caught on 2022 visit
- heading east, so then the exit

this short initial cut is so narrow that it was
then imagined to have been made by ATVs
ploughing through, along a deer trod

CnGB



failed photomerge due to being perched on a slowly keeling forwards peatmossheather tussock facing into a particularly adverse spell of bitter wind - refuge taken in lee of yonder hag



the short initial cut leads into a bold loop around a pond and out into another long straight

- confusion becomes possible, with multiple loops and straights, if embarked on the entire skywalk
- this lochan is called the 'pond'
- the next is called the 'pool'



CnGB

pond



MB

successful photomerge 15 mins
later due to sun breaking
through and energy-bar-restored
sense of balance

<< CnGB



the long (almost) straight

- this is a cleared way through fairly shallow tussock grass, rather than deep peat



<< CnGB

AnR



the skywalk skirts both summits as both are off the general W-E line, indicated by the angle of entrance/exit

- west to nick 725 is cairned
- east to Bealach na Criche 625 seems not to be, line across dome flank is more of a trod followed by ATVs

- short initial cut
- bold loop around pond
- long straight
 - even when not straight, the curves have a surveyed quality

CnGB



MB

Meallan Buidhe from Carn nan Gearran Bana

Sgurr a' Phollain

Beinn a' Bhathaich Ard

SP9.44 Neaty Burn

segment G - half-way down into Coracharabic Forest (see slide 63 for name)



the skywalk skirts the northern fringes of **Carn nan Gearran Bana**

1. short dug sections in webbed fingers (odd that the wider gap '0' is left unimproved)
2. **intersection with SP9.44** - next - the X-roads
3. short dug bit
4. pool x - false escape

SP9.44 Neaty Burn
segment F - up and across CnGB S shoulder



SP9.44 Neaty Burn G

a separate ppt addresses the remarkable history of **SP9.44**

- until current online, it was unmapped beyond the head of the Neaty Burn west valleyside (segments A-E)
- the traverse across west side of CnGB is marked by a line of cairns
- the stark ATV track (on a lower line) was assumed to be modern
- it extends north into 'Coracharabic Forest' down to 420m, as a historic appendage to the Farrar lands of Lovat
- imagery now hints at an early hybrid of made path and dug way tbc



this vegetation is impenetrable

U-bend

short cut-through

islet

X-roads

photos

borrow pit ?

the 'skywalk' W-E is curiously ill-defined at this sole cross-roads
 - the hint of a triangular junction is illusory (or deer trods)

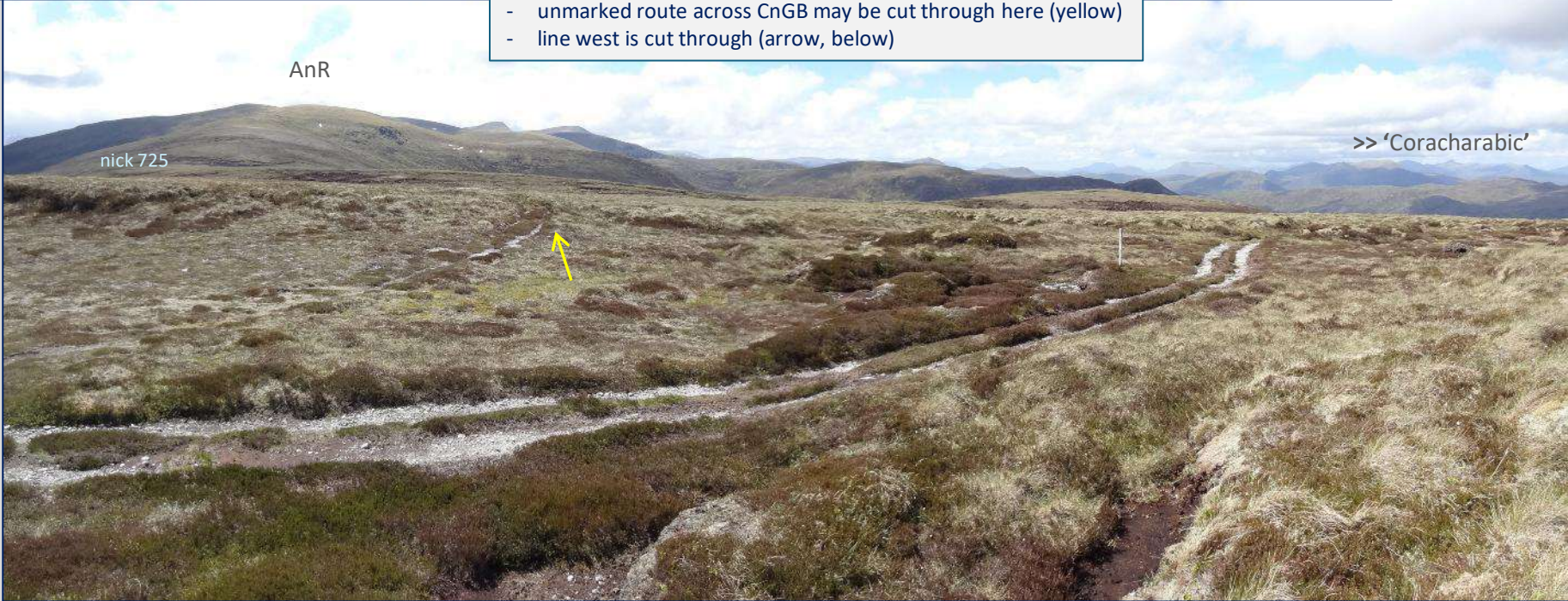
SP9.44 Neaty Burn F





CnGB

the cross-roads
- unmarked route across CnGB may be cut through here (yellow)
- line west is cut through (arrow, below)



AnR

nick 725

>> 'Coracharabic'



CnGB

short cut-through

views from 'islet' of dry heath,
west of X-roads



AnR

dug/cleared ways **1c** 650 m

U-bend into long cut -
note pool in distance



AnR

nick 725

pool

sp9.44 Neaty Burn F

X_roads >>

from Carn nan Gearran Bana, the 'skywalk' has to tackle the most extensive peat hags, as well as thick tussock

the route is in two parts

- cut and cleared through the hags and tussocks, via 'pool' - dotted yellow
- from the far end of the yellow - unmarked here but visible to the nick - a bold more conventional path, both dug and made, along the SE brow

green is the detour - 8 minutes between photos that seemed more like half an hour, tussock maze

this section (X-roads to nick 725) is clear and continuous enough to have been added to current online 25k (not 50k, which only adds SP9.44 F-G)
 - all by remote mapping from imagery
 - and except it decidedly isn't 'continuous' ☹️



green arrow is the 'detour' to right-angled bend

the route choice is a mystery - why not follow the sequence of bare heath convexities, as further east ? (and as partly does the conspicuous deer trod)

- the loop around the worst of the hags seems perverse - why cross sides rather than stick to the SE brow, if not bare-dome hopping ?
- the boldly straight more conventional path along the SE brow takes an abrupt turn inland, unlike the sweeping curves further east
- almost as if there are different signatures meeting awkwardly half-way





CnGB

islet

the cut here is into quite deep peat

- the neat green 'track' was presumably dug down until the bare tundra floor was reached, rather than surfaced
- the apparent parallel edges suggest a measured cut width
- ditches seem improbable, with nowhere to drain to
- the sharpness may simply be due to an occasional ATV going through, even just once or twice (no traces seen)



the U-bend seems preposterous !

- why not a cut through the narrow hag, mostly flat floor ?
- is this a piece of fun ?!
- given the 'bold loop round the pond' between MB and CnGB...

AnR



now for the 'quandary' :

- left shows a simple cleared way, skimmed of thin vegetation to a firm base
- it becomes deeper dug and mossier (below, looking back, exiting into a better bit)
- it appears to bear left (arrow) as per imagery and 25k
- but could carry straight on into camera and bear away right - trods, again...

CnGB



the 'quandary' :

- right shows the thin-skim way from previous queried fork, starting promisingly
- below, from a bit further on, shows it becoming a narrow ditch cut through deep tussock, opening into a lower quagmire, impossible to cross or skirt
- it runs into a large pool ...
- inset suggests a continuation out the far side, as per imagery
- there is no apparent way round...



the 'quandary' :

- back at the 'fork' there seems to be a cut way through the hags to the SE brow - that green arrow
- it is straight-sided, and 'goes' with some jinking where soggy
- but no trace of the fabled SE brow path ever extending further this way ... which in hindsight would have been sensible 😊



why the obstacle ?

- which is a continuous barrier of pools-bogs-peat walls: even if negotiated, regaining the track in the interior would be a travail

what has changed ?

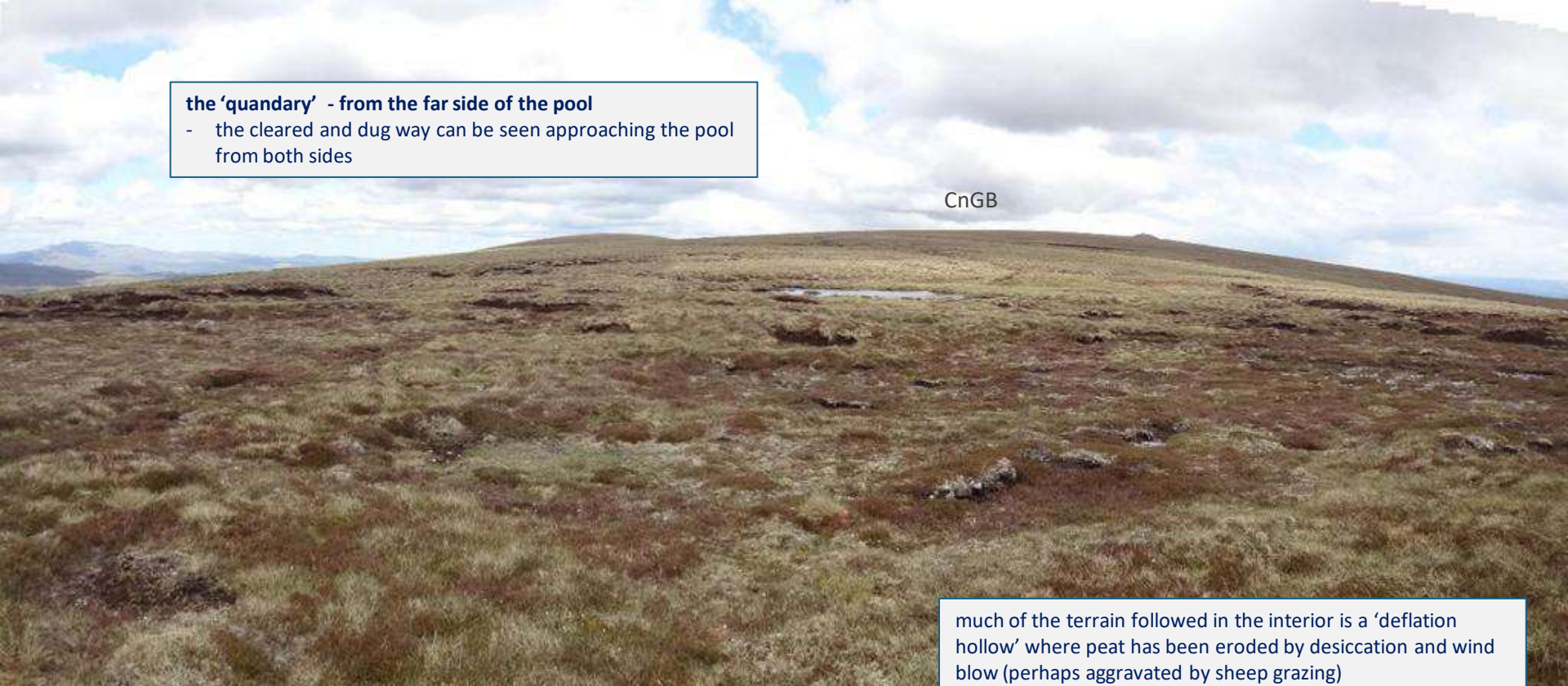
- given that elsewhere (eg. foot of final Zs to Sgurr a' Phollain) peatmoss topography seems hardly to have changed in 100 years or more :
- subsidence seems unlikely, given the firm substrate on solid bedrock
- some change in the drainage, then ?
 - perhaps drainage channels were dug north and /or south, which have become clogged ?
 - straight lines which might possibly have been cuts for drainage are arrowed blue - but there are many such 'lineaments' of natural origin



the 'quandary' - from the far side of the pool

- the cleared and dug way can be seen approaching the pool from both sides

CnGB



- much of the terrain followed in the interior is a 'deflation hollow' where peat has been eroded by desiccation and wind blow (perhaps aggravated by sheep grazing)
- it does not require as much digging as tussock or deep peat
 - the high bank is the edge of the dense tussock micro-jungle, from which the peat may have retreated

AnR



bank





emerging from the 'deflation hollow' to cut through solid tussock-on-peat to break through onto the SE brow

- tussock jungle this side is that 8' diversion torment
- again, wheel ruts ? suggesting a generous six-foot cut





nick 725

AnR



this almost 90-degree bend leads into the SE brow path - a heroic undertaking, with fine vistas across Strath Farrar as the depth of cut reduces



>> X-roads





2

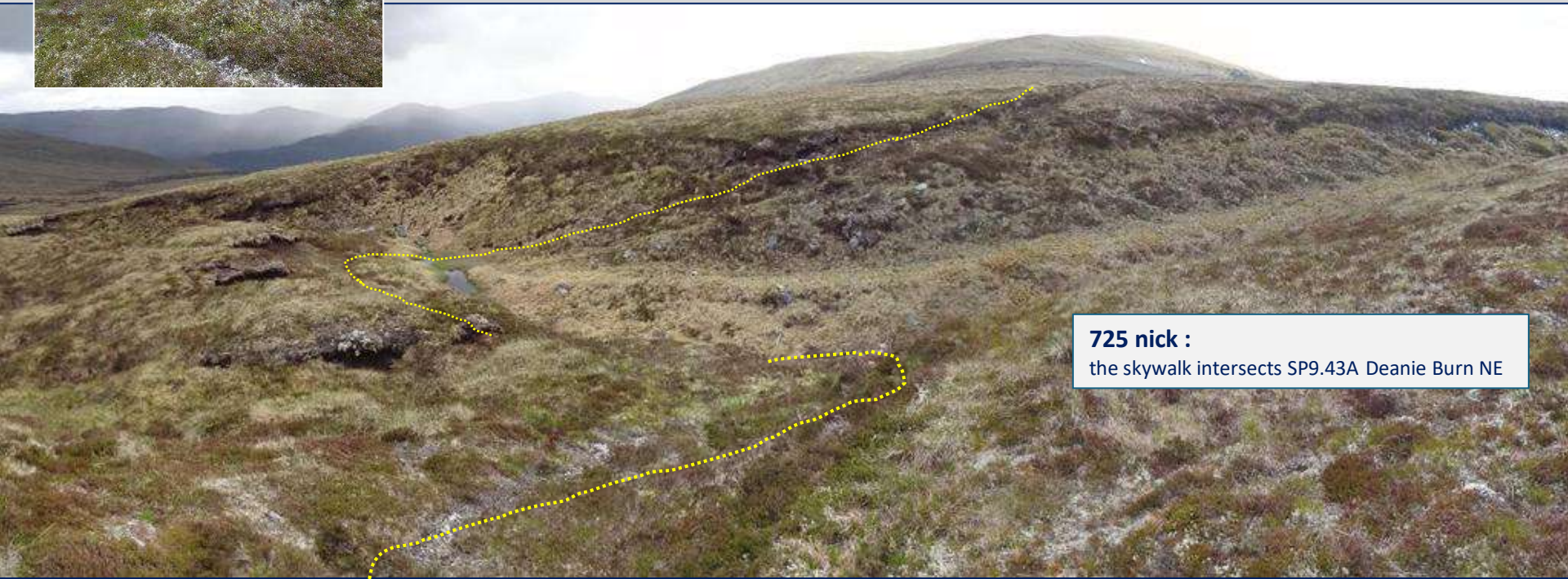
- as it nears 725 nick, it emerges from the rank tussock
- simple path clearance through a vegetated thin block field
 - some minor cut-and-fill benching
 - use of blocks for low retaining walls

photos from May 2026
ascent of SP9.43A



>> X-roads

1





GEarth
HistIm

the SP9.43A traverse across upper Coire nan Caorach is a herculean achievement comparable to the skywalk just above - a mystery why some more direct line was not taken (see below)

see **Parallel Ditches** ppt for a full account of SP9.43A



SP9.43A comes up 725 nick from its circuitous route up the Deanie Burn - see Parallel Ditches ppt

the sudden burst of sun was so giddy that this shot needed 2.5 degrees of untilt
(or maybe the massive peatbank was the effective skyline)



the intersection :

- SP9.43A comes up east side, crosses the firm causeway, and carries on through 725 nick
- SP9.43B 'skywalk' crosses here too, climbs out by a steeper cut ramp
- remarkably similar to the crossing of 625 Bealach na Criche



special care seems to have been lavished on this final stretch
- it has an almost sculptural quality (think Charles Jencks)

SP9.43A carries on through 725 nick to a substantial shelter tucked into the far brow

exit ramp



the skywalk

AnR

719



the exit ramp dwindles to a slot

- a bit of an afterthought, compared with the SE brow path opposite
- possibly the shelter was the main starting point for continuing west across bare heath island to col 719

725





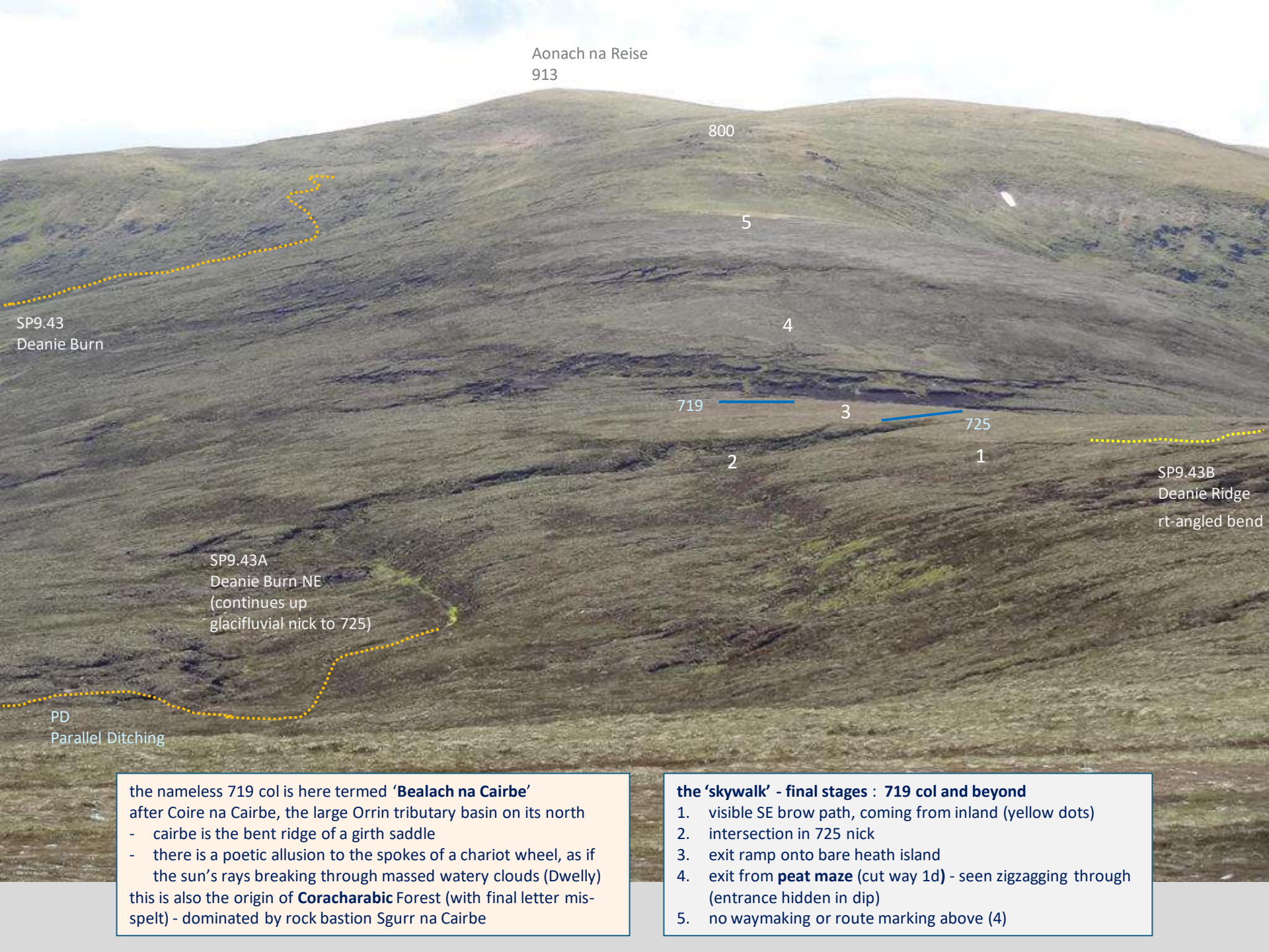
AnR

in March 2022, a tiny anomaly among all the snow streaks caught the eye from a mile away (from SP9.43 traversing CnGB)



it called for a zoom shot, the first premonition of something which has become remarkable, close to unique

- this was just before encountering the cut way between CnGB and MB
- even then, they were dismissed as modern easings for ATVs - which clearly cross this shoulder, with a duplicate track up to it



Aonach na Reise
913

800

5

4

719

3

725

2

1

SP9.43B
Deanie Ridge
rt-angled bend

SP9.43A
Deanie Burn NE
(continues up
glacialfluvial nick to 725)

PD
Parallel Ditching

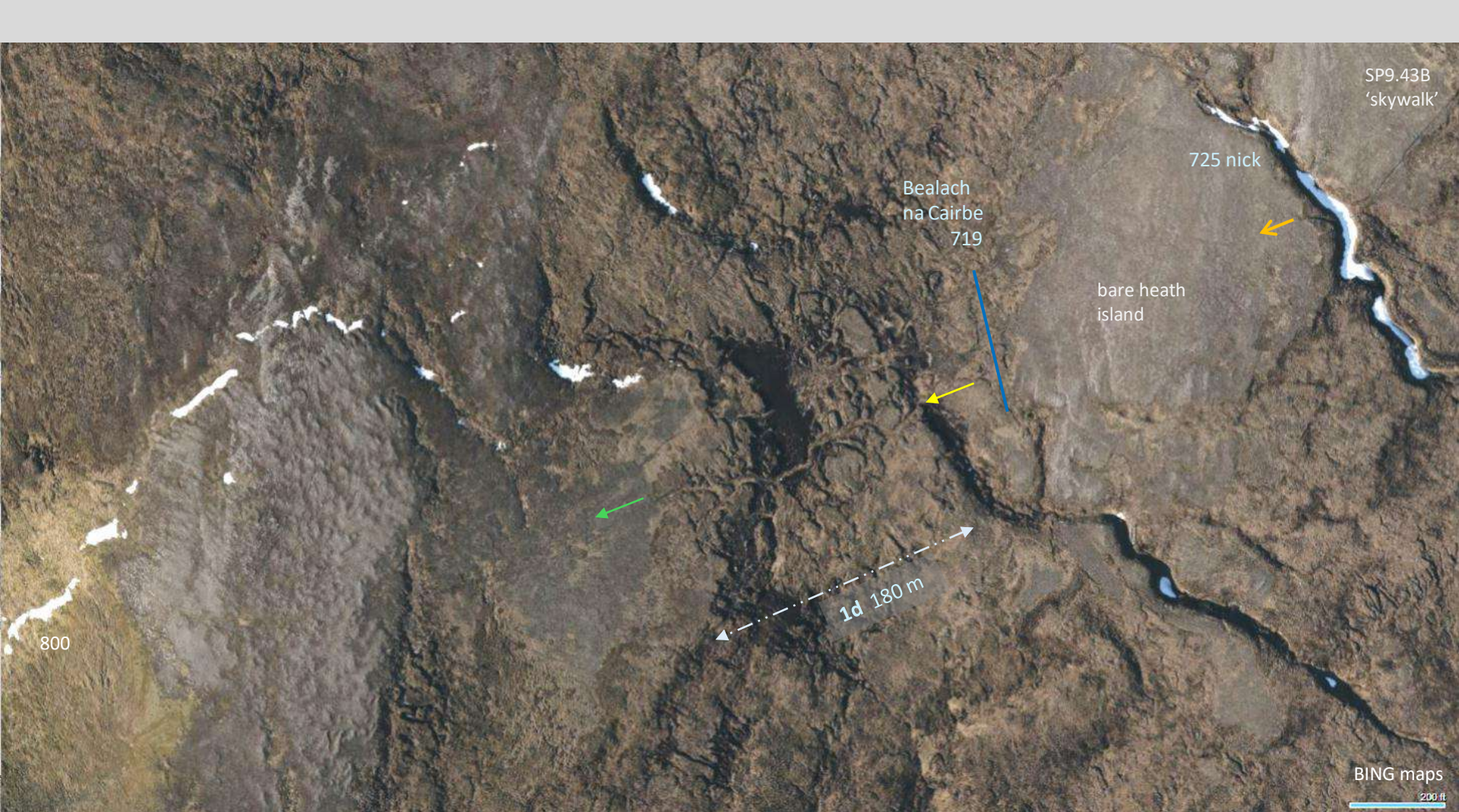
the nameless 719 col is here termed **'Bealach na Cairbe'** after Coire na Cairbe, the large Orrin tributary basin on its north

- cairbe is the bent ridge of a girth saddle
- there is a poetic allusion to the spokes of a chariot wheel, as if the sun's rays breaking through massed watery clouds (Dwelly)

this is also the origin of **Coracharabic** Forest (with final letter misspelt) - dominated by rock bastion Sgurr na Cairbe

the 'skywalk' - final stages : 719 col and beyond

1. visible SE brow path, coming from inland (yellow dots)
2. intersection in 725 nick
3. exit ramp onto bare heath island
4. exit from **peat maze** (cut way 1d) - seen zigzagging through (entrance hidden in dip)
5. no waymaking or route marking above (4)



SP9.43B
'skywalk'

725 nick

Bealach
na Cairbe
719

bare heath
island

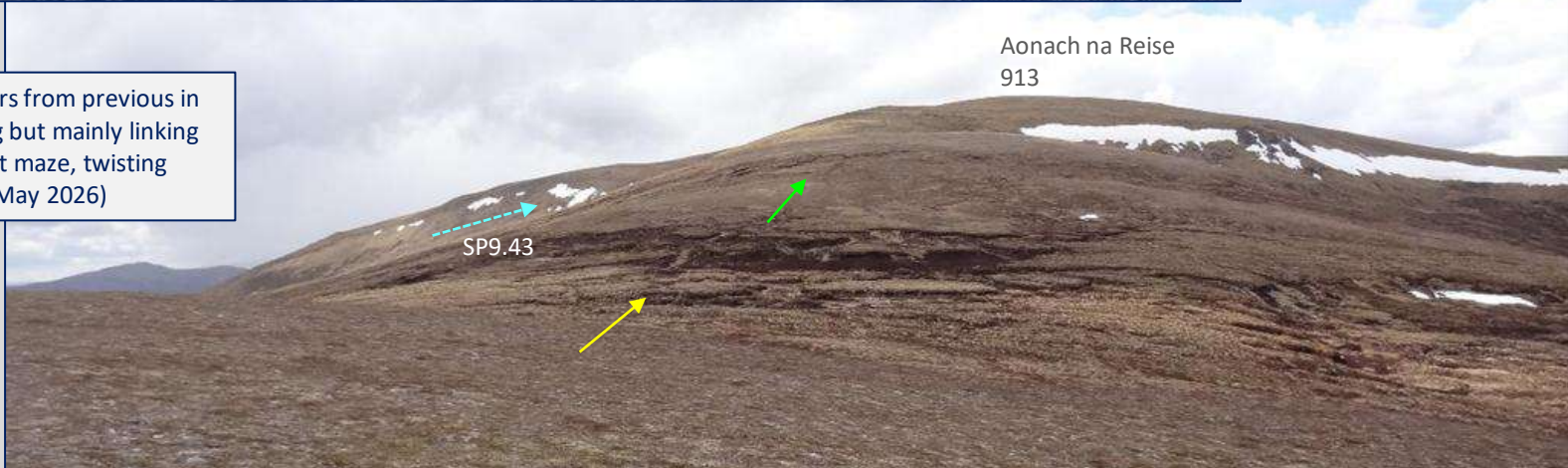
800

1d 180 m

BING maps
200 ft



this **improved section** differs from previous in being up a slope, partly dug but mainly linking eroded channels in the peat maze, twisting and turning marvellously (May 2026)





the entrance to the **peat maze** is difficult to locate, and would have benefited from marking, or from extended excavation across the messy dip at the foot of the bare heath island

probable marker cairn on top of bare heath island



the exit from the **peat maze** looks like straight ahead, and as messy as the entrance
- but no, a final sharp dogleg right has a neat debouchure onto that delicious bare heath



apart from 'doing the skywalk' (almost) the main reason for returning to the **peat maze** a month later is that this final dogleg had escaped photoing - not surprisingly, given the poor conditions seen in the gallery

this dogleg is now named '**Jane's jinxed jink**' - for the discoverer of the two extraordinary Parallel Ditching segments in the upper reaches of SP9.43A, co-worker Jane Meek, spotted this chicane and tugged the head-down writer's sleeve as he ploughed straight on ahead

the revisit was blessed by a last moment of sun before the showers broke through from the west ... and cursed as yet another step-up onto a peat hag vantage point induced a dire inner thigh cramp - soaking wet elbows and thighs from writhing on the soggy moss

CnGB

725

719

cleared way entrance/exit



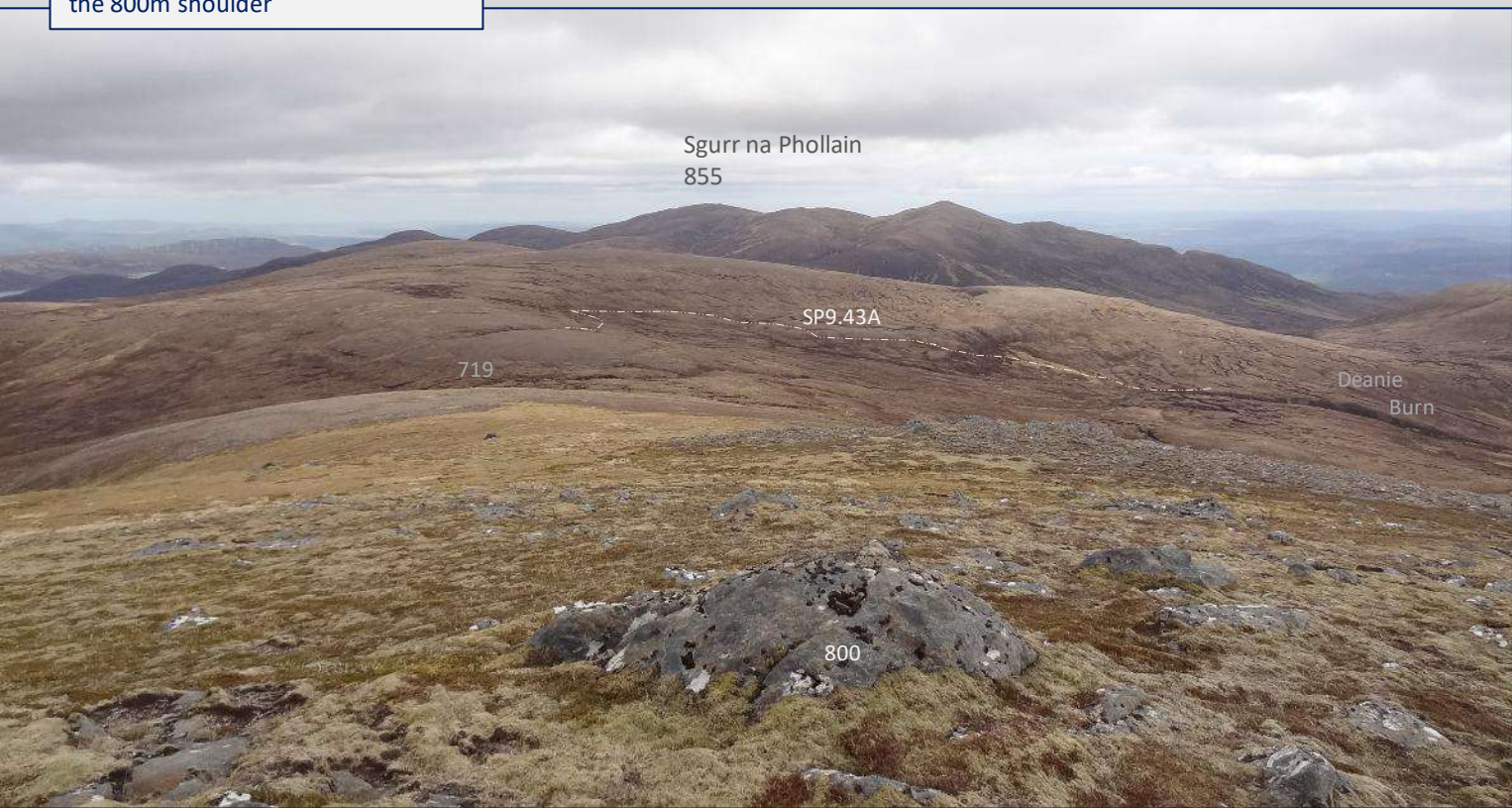
(880)



SP9.43 ascends the grassy headslopes of Coire na Ba Baine by two zigzags but ceases well below the open brow



east along the Farrar 'skywalk' from the 800m shoulder



SP9.43 joins the skywalk at a surprisingly high point, at 880m

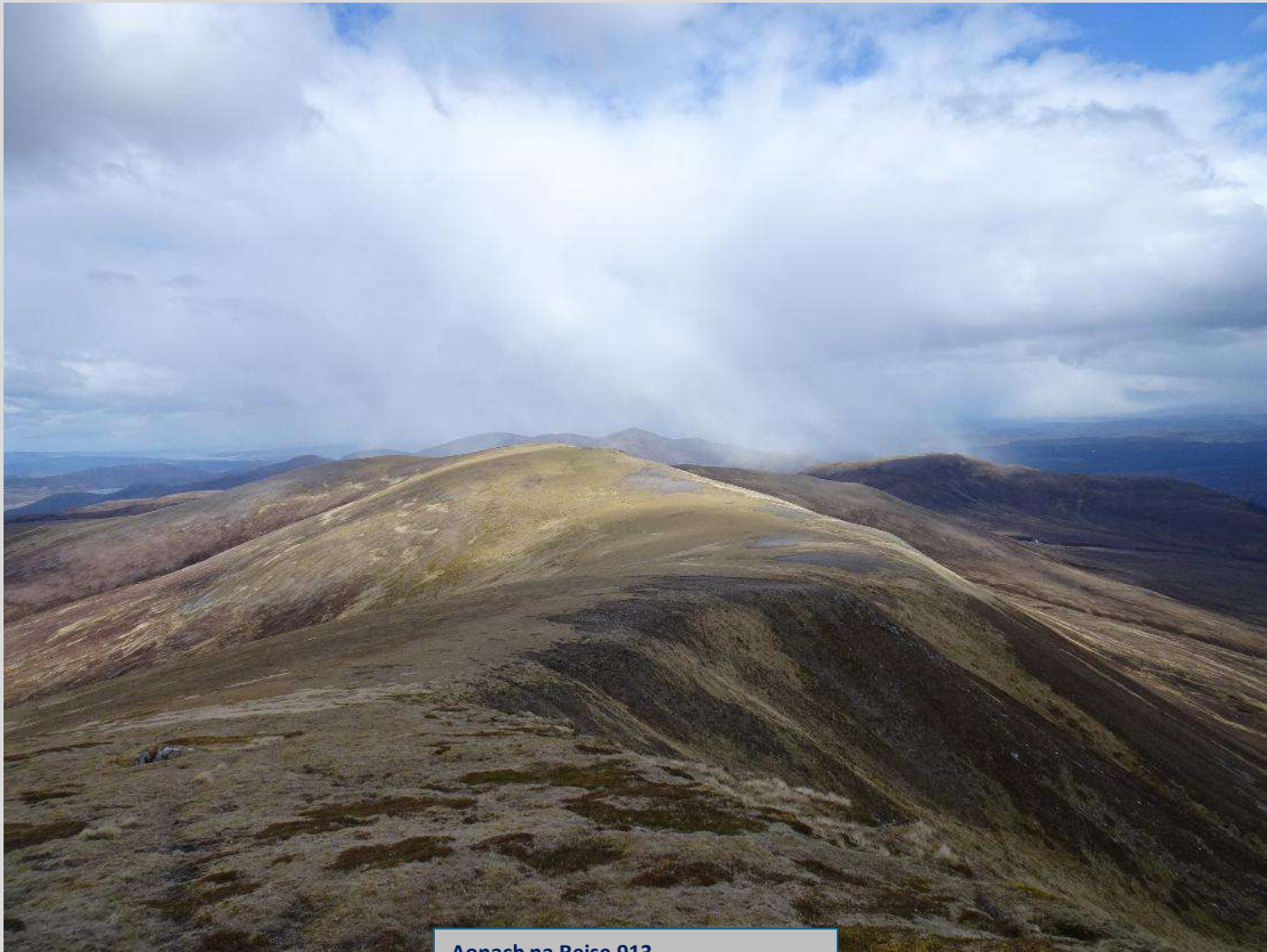
- made before 6-1 ~1875, earlier than most along this ridge
- does this suggest it was to gain the higher summits further west ?
- a simple loop east entails unnecessary ascent and descent - unless a summit has been attained and returned from



Aonach na Reise 913

- prospect west to Sgurr na Ruaidhe
- and retrospect from its west end (BBA in background)





Aonach na Reise 913
➤ from Sgurr na Ruaidhe east top

Jane Meek

Sgurr na Ruadh 993

- unseen until a few yards from the brink - the cataclysm
- a prehistoric rock slope failure biting deeply into the summit plateau
- in stark contrast to the subdued Farrar skywalk terrain thus far

- could this be a prime reason for bringing guests up here ?
- a spectacular finale and coup-de-theatre
- in a Victorian era with a passion for rocks, fossils, and the new science of geology - the wonders of the earth



the writer spreadeagled to capture the scene, in a sudden spring gale



MB

SnP

AiC

Deanie Burn



the Farrar skywalk
from the south

Sgurr na Ruaidhe
- Aonach na Reise
- Deanie Burn

from Carn Gorm Cannich



Deanie Burn
- Carn nan
 Gearran Bana
- Beinn a'
 Bhathaich Ard

from Meall a' Mhadaidh
south Strath Farrar