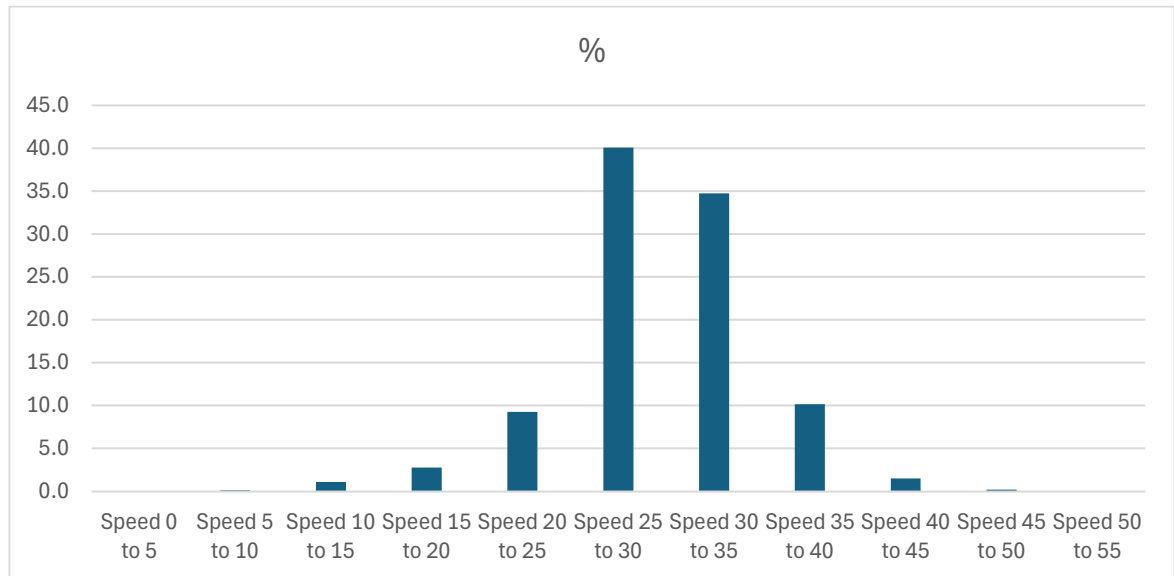


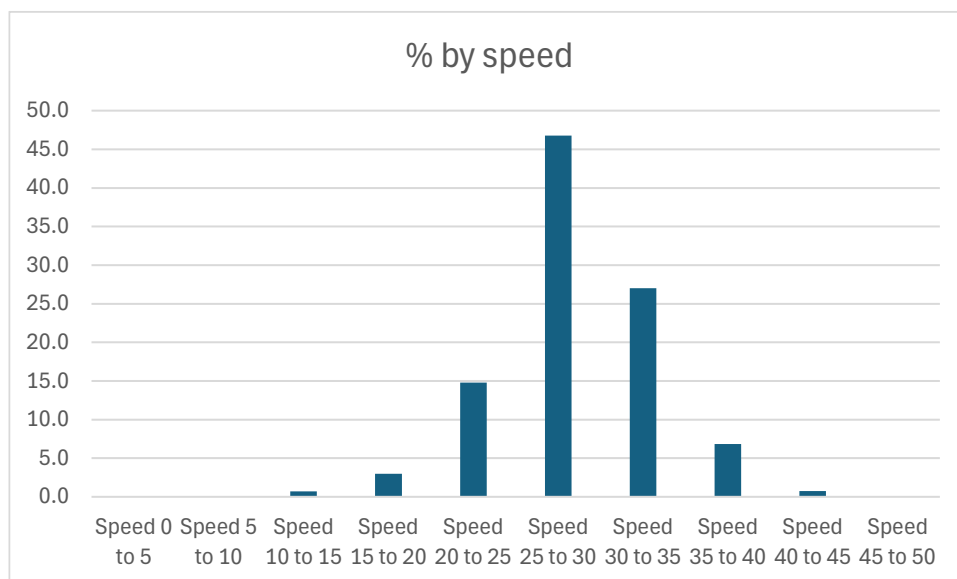
## SAM2 report for 23<sup>rd</sup> June 2025 to 3<sup>rd</sup> August 2025

The Coronation Terrace SAM2 continued to have a date malfunction (it still thought it was 1970). The total speeders was again around 12% which is common for this location. Unfortunately, the data by time looks questionable so this analysis was ignored.



The team believe they have a fix but if it doesn't work this the unit will be sent away for repair.

The Stow Bedon road data showed just under 23,000 vehicles with around 8% exceeding 35 mph



Peak times for traffic and speeders on Stow Bedon Road will guide speedwatch to a 5pm slot there soon.

