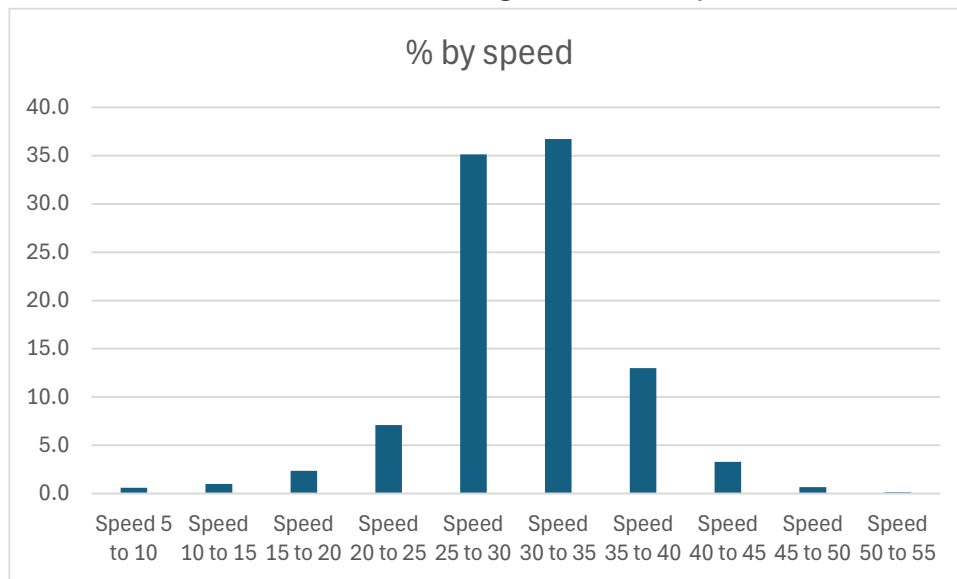


SAM2 report for 3rd August 2025 to 5th September 2025

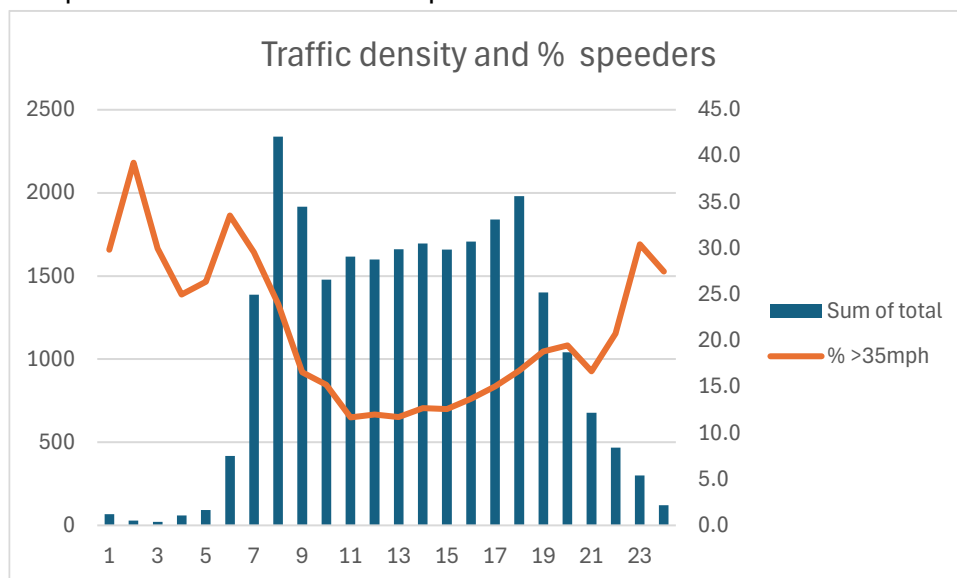
The SAM2 machine which thought it was 1970 has been reset and worked correctly for this period.

ATTLEBOROUGH ROAD

The SAM 2 recorded around 25,500 vehicles. Only 46% of vehicles were at 30mph or less. Of the 54% over 30 mph the total >35 mph was 17% which is a new record. Ten of these were driving at 55 to 65 mph.



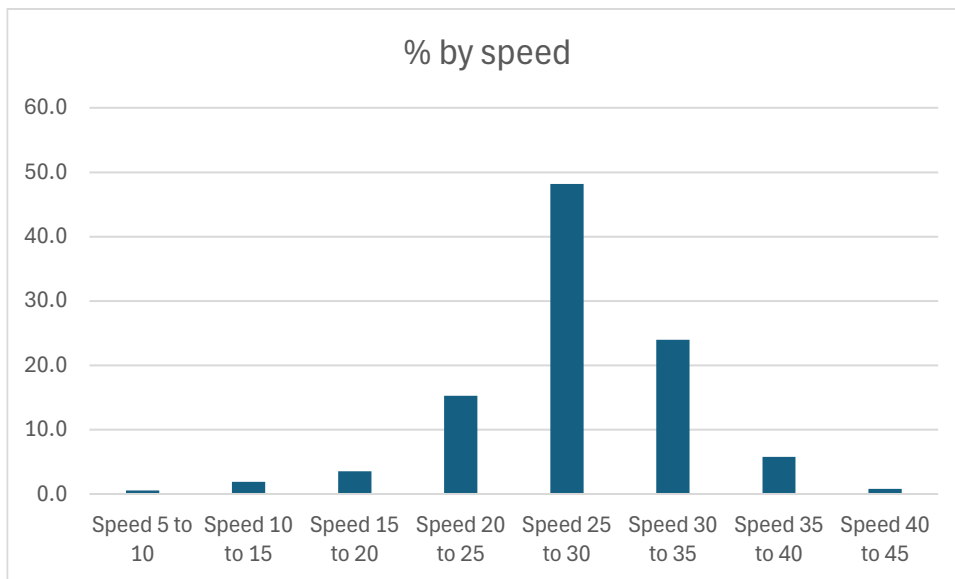
The peak times for traffic and speeders is shown below



The Speedwatch team will continue to run sessions at 07:30 on 17:00 until the hours of daylight preclude these times.

NORTHACRE

There were around 9,300 recorded vehicle movements. The good news is 69% were at or below 30mph with only 6.6% exceeding 35mph.



Peak times for traffic and speeders are shown below

