

## SAM2 report for 5<sup>th</sup> September 2025 to 7<sup>th</sup> & 22<sup>nd</sup> October 2025

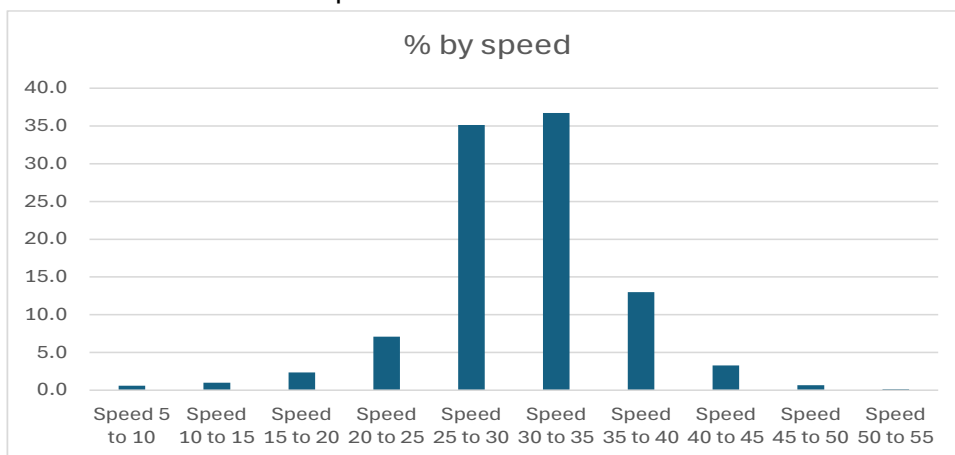
There are concerns over the lack of locations (awaiting new pole/s) and the batteries losing condition limiting the data that can be collected.

The shorter daylight hours mean that there will be fewer Speedwatch sessions at the peak times.

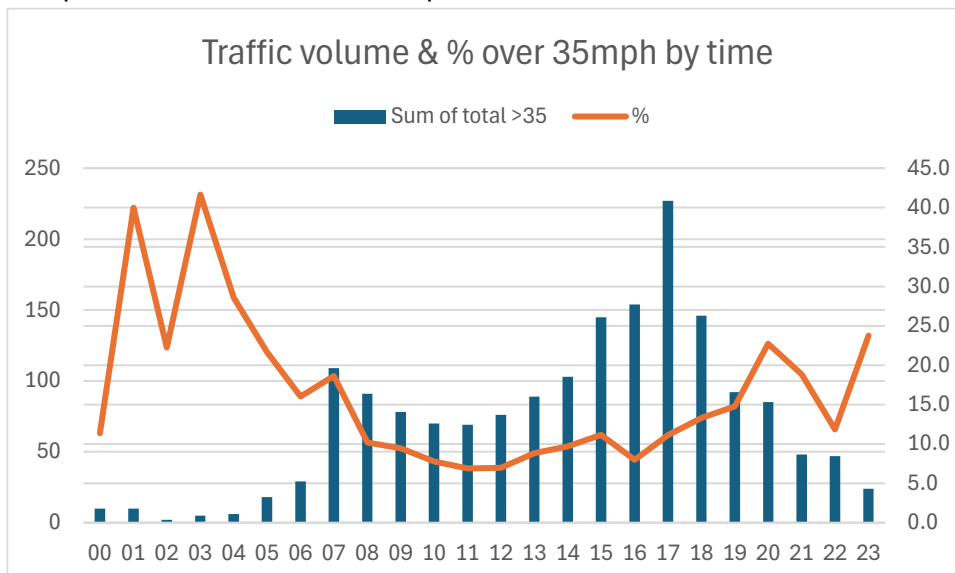
### STOW BEDON ROAD

The SAM 2 only recorded just under 8,000 vehicles due to its battery failing on the 7<sup>th</sup> October.

62% of vehicles were at 30mph or less but 11% exceeded 35mph with a new record of one at 80-85mph.



The peak times for traffic and speeders is shown below



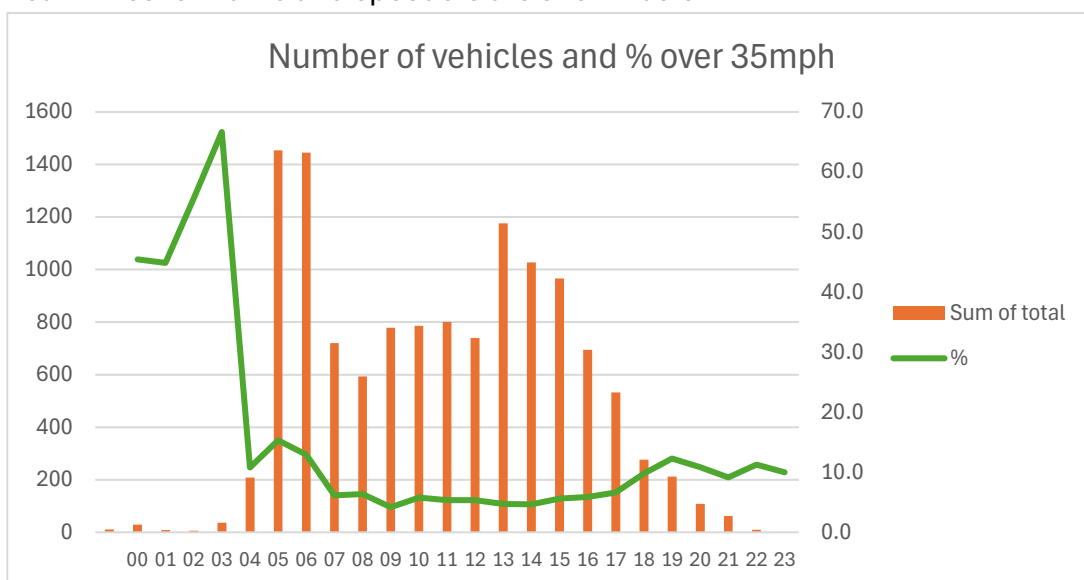
Early mornings and afternoon / evenings continue to have the highest traffic volumes and well over 10% exceeding 35mph.

## NORTHACRE

There were around 12,000 recorded vehicle movements. The good news is that again around 70% were at or below 30mph with only 7.2 % exceeding 35mph.



Peak times for traffic and speeders are shown below



At peak times (5-7am and 5-7pm) around 15% of vehicles exceed 35mph