

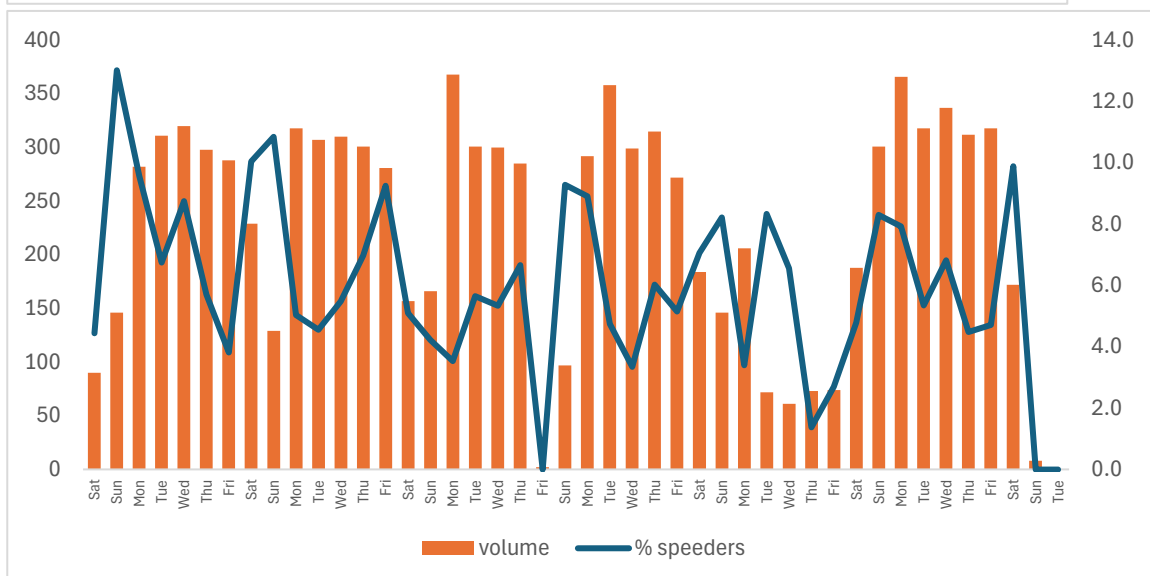
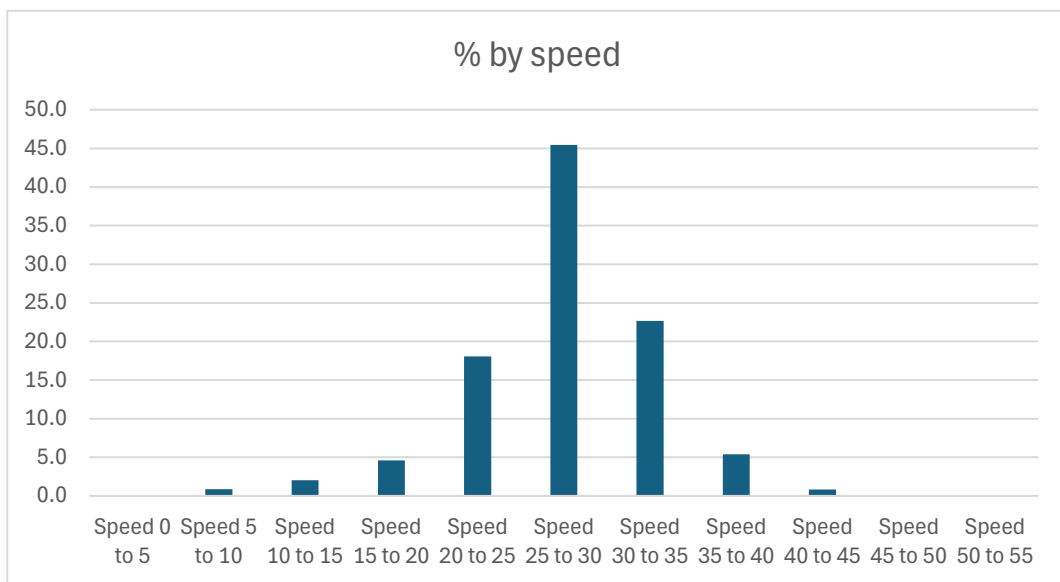
SAM2 report for 2nd November to 17th December Northacre

9,958 vehicles were recorded, however the SAM2 unit had some battery issues and Northacre had some closures due to National Power works and so this number is lower than previous surveys.

The data shows 71% at 30mph and an average of 6.3% over 35mph.

Traffic volumes are higher on weekdays but a bigger % speed at weekends

People speed in the small hours and peak times for traffic are 7am to 9am and 3pm to 6pm.



Traffic volume by time & % speeders

