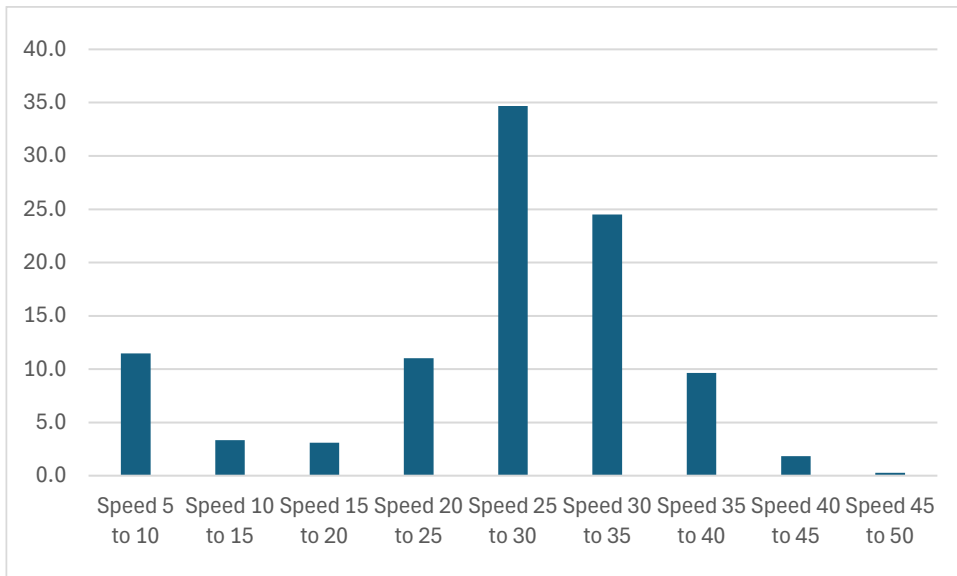


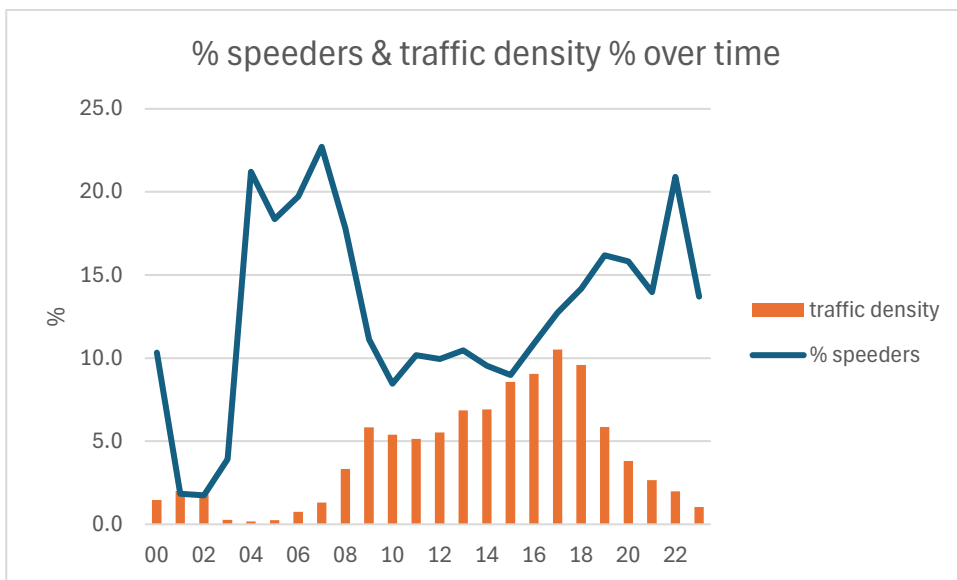
Stow Bedon Road SAM2 Dec 24 to Feb 25

Just over 19,000 vehicles were recorded and of these 64% were driving at 30mph or less. Around 12% as an average exceeded 35mph.

We have a new record with one driver travelling at 80-85mph and nine between 50 and 65mph!



The times of speeding versus traffic density were:



This shows that the highest % speeders (>35mph) are in the small hours of the morning and evenings / nights. As the daylight hours improve, we will try and set up speedwatch around 7-8am and 6-8pm to try and discourage poor driving.