

Enhanced Village Hall Entrance by 'Mardy Roots'

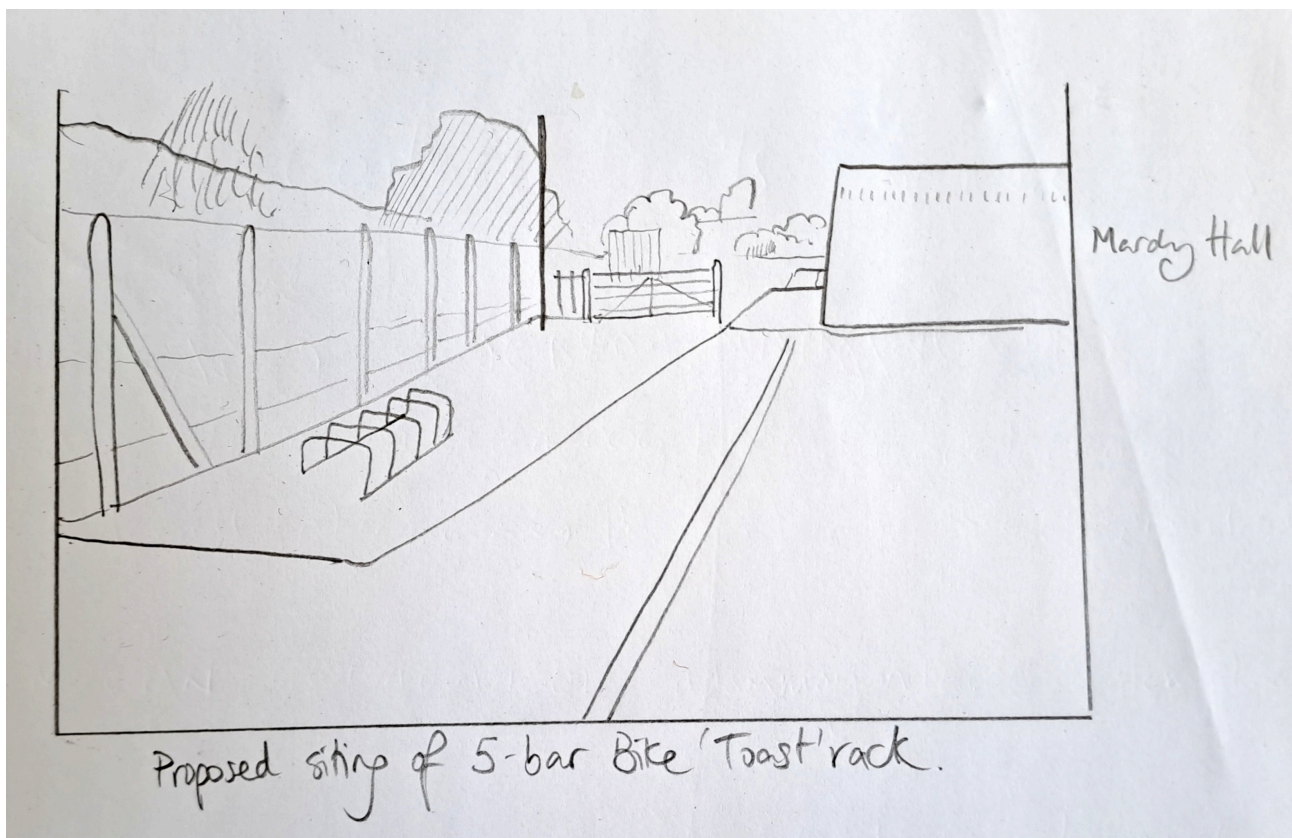
This proposal has recently been approved by the Community Council and the plantars are being made by volunteers at 'Growing Space' which is situated behind the Resource Centre.

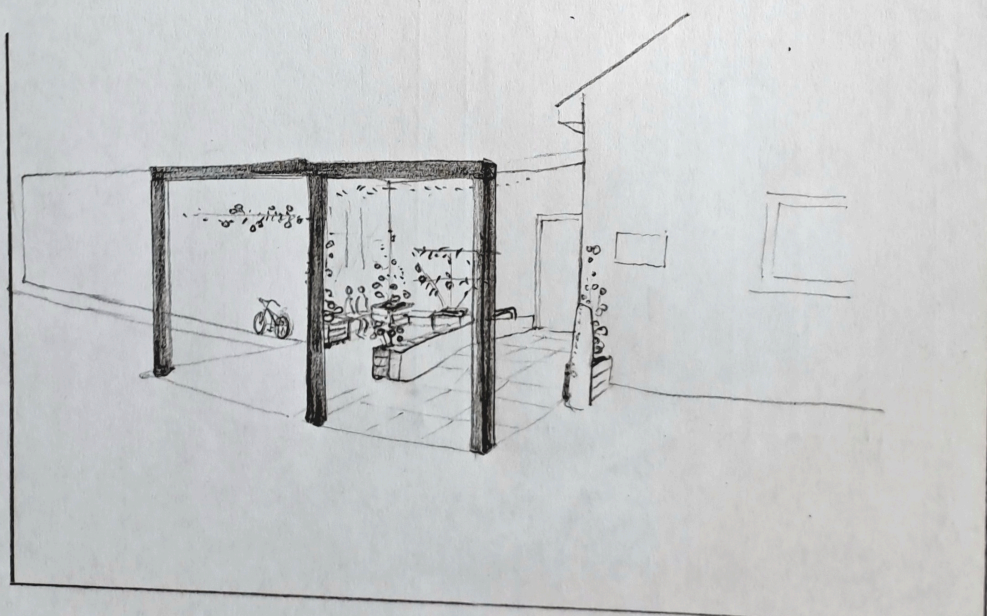
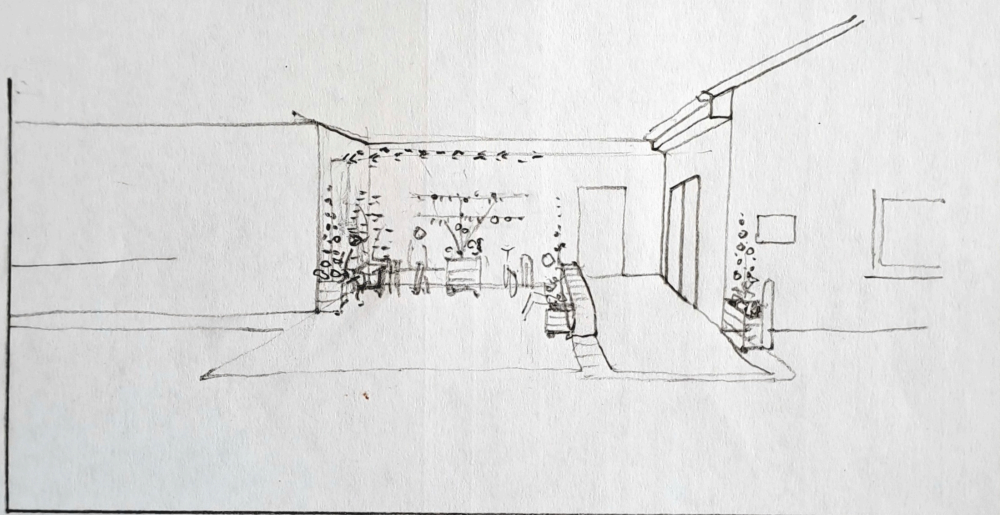
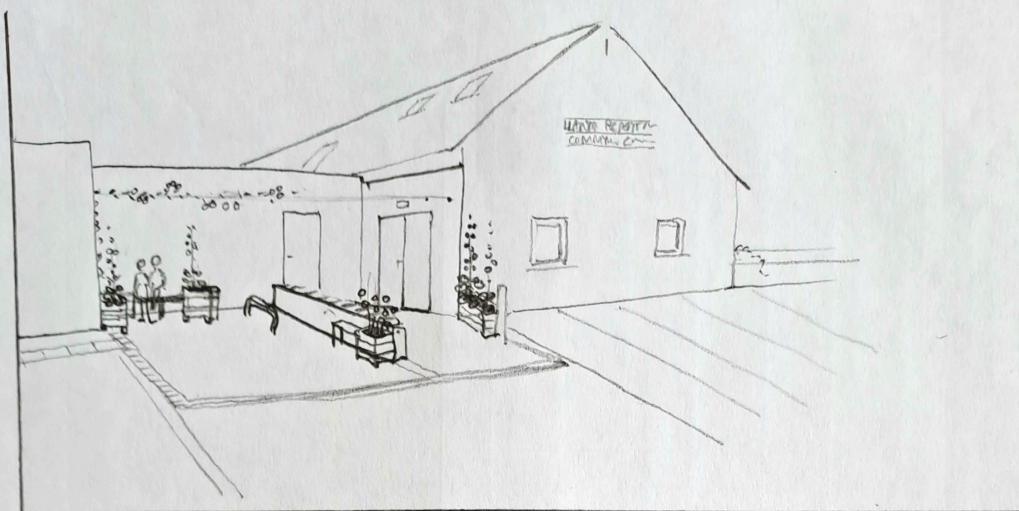
Each of the 5 plantar has a basic bench seating arrangement. And adjacent trained flowering climbers should offer overhead shade for parents whilst waiting for their children. Planting will provide colour and sustenance for pollinators as well as people

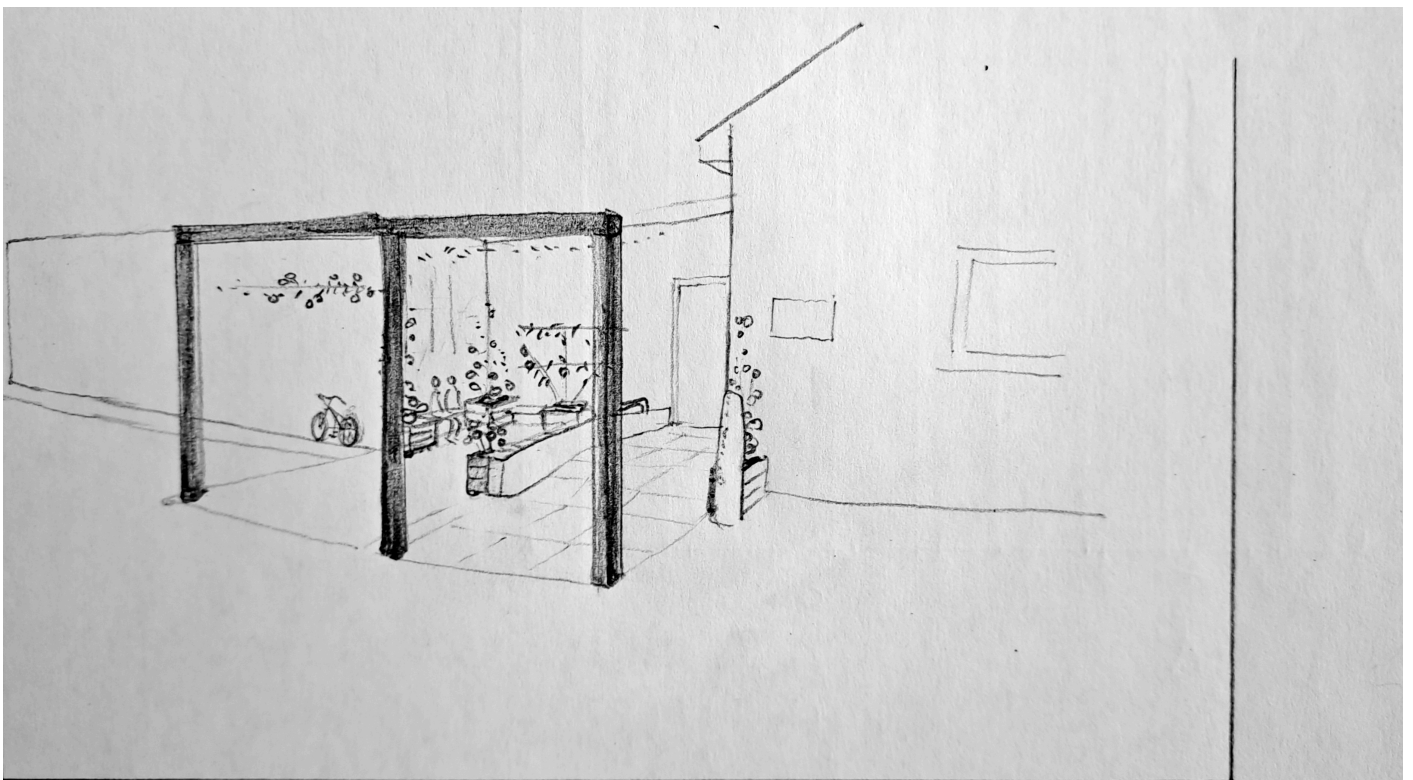
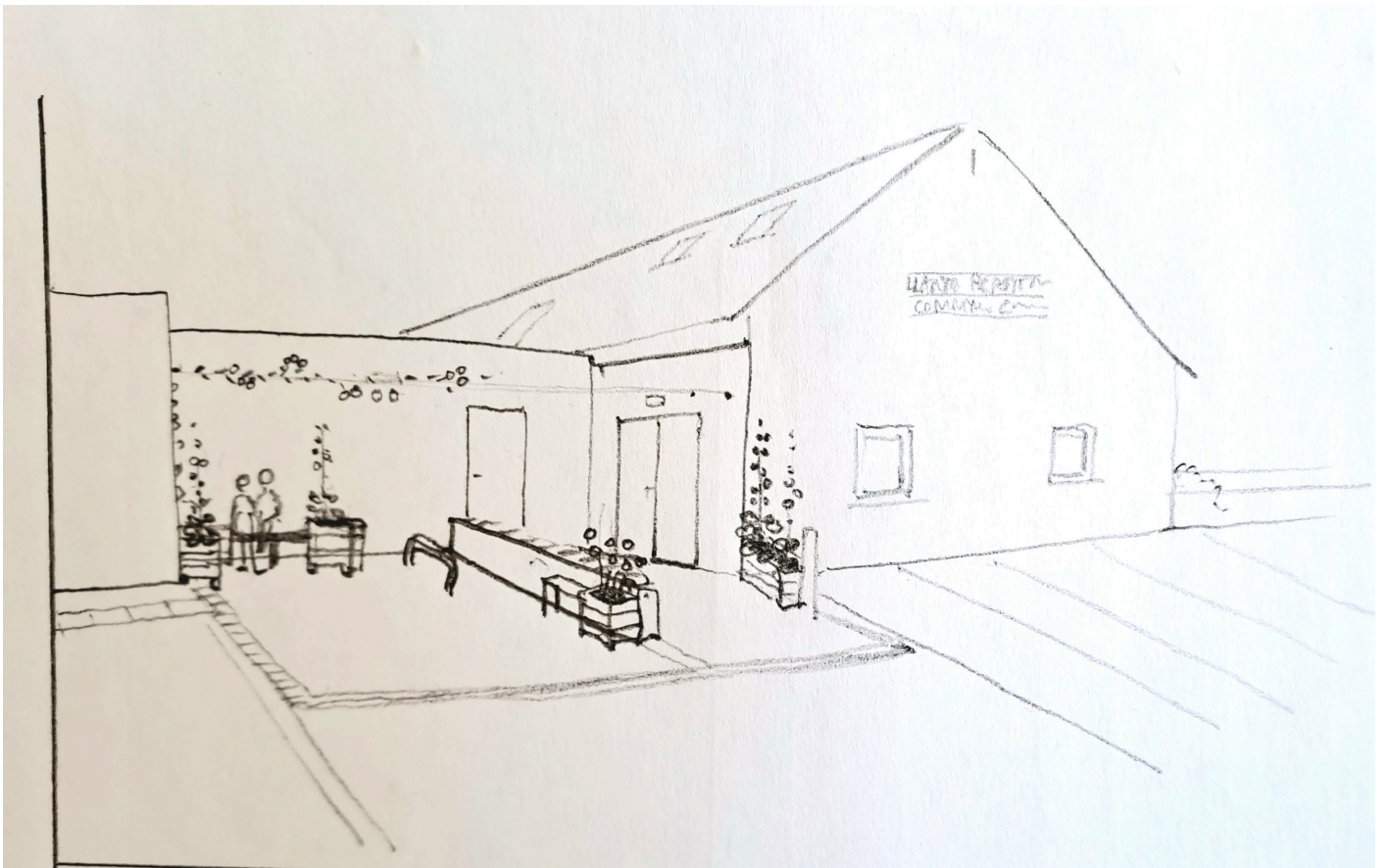
A bike/buggy lock-up and an additional 5-bar 'toast-rack style' cycle lock-up will be situated to the left of the carpark entrance

These randomly-arranged sketches should help you visualise the proposal and please note that the pergola-style entrance frame is a further suggestion for consideration

Zoe Cameron June 2025







Proposal: Hardy Hall Entrance

MARDY HALL: Entrance Revamp.

