

# Lowe's Royal Collection OF REELS, STRATHSPEYS & JIGS

AS PERFORMED AT

HER MAJESTY'S BALLS

AT THE EDINBURGH &

GLASGOW ASSEMBLIES

And at all Fashionable

BY  
**HOWARD'S BAND**

Meetings in Scotland

DEDICATED BY SPECIAL PERMISSION TO HER MOST GRACIOUS MAJESTY

**Queen Victoria**

BY

**JOSEPH LOWE**



PATERSON & SONS,  
MUSIC SELLERS TO THE QUEEN,  
27, GEORGE ST EDINBURGH, 152, BUCHANAN ST GLASGOW,  
17, PRINCES ST. PERTH & 36, NEW MARKET ST AYR.



# CONTENTS.

## BOOK I.

	Page		Page
Allt Ghiasach, . . . . .	<i>Strathspey</i> , 18	Johnny Pringle, . . . . .	<i>Strathspey</i> , 13
Archie Menzies, . . . . .	<i>Reel</i> , 24	Lad wi' the Kilt, The . . . . .	<i>Reel</i> , 16
Argyll Bowling Green, The . . . . .	<i>Reel</i> , 21	Lady Ann Hope, . . . . .	<i>Strathspey</i> , 12
Balmoral Castle, . . . . .	<i>Strathspey</i> , 2	Lady Charlotte Campbell, . . . . .	<i>Strathspey</i> , 15
Birk Hall, . . . . .	<i>Reel</i> , 18	Lady Elizabeth Lindsay, . . . . .	<i>Strathspey</i> , 28
Birks of Abergeldie, The . . . . .	<i>Reel</i> , 22	Lady Harriet Hope, . . . . .	<i>Reel</i> , 27
Bob o' Fettercairn, The . . . . .	<i>Reel</i> , 14	Lady Loudon, . . . . .	<i>Strathspey</i> , 20
Bonnie Birks of Balmoral, The . . . . .	<i>Reel</i> , 7	Lady Madeline Sinclair's Birth-Day, . . . . .	<i>Reel</i> , 29
Brechin Castle, . . . . .	<i>Strathspey</i> , 29	Lady Mary Hope Vere, . . . . .	<i>Reel</i> , 11
Cameronian Rant, The . . . . .	<i>Reel</i> , 25	Lady Mary Ramsay, . . . . .	<i>Strathspey</i> , 10
Captain Byng, . . . . .	<i>Reel</i> , 15	Lady Montgomery, . . . . .	<i>Reel</i> , 30
Charlie Stuart, . . . . .	<i>Reel</i> , 10	Marquis of Huntly's Highland Fling, The . . . . .	<i>Strathspey</i> , 9
Cluny Castle, . . . . .	<i>Reel</i> , 3	Miller of Drone, The . . . . .	<i>Strathspey</i> , 4
Clyde Side Lasses, . . . . .	<i>Reel</i> , 26	Miss Ann Amelia Stewart, . . . . .	<i>Strathspey</i> , 25
Court Frolics, . . . . .	<i>Jig</i> , 32	Mrs Garden of Troup, . . . . .	<i>Strathspey</i> , 27
Craigie Hall, . . . . .	<i>Strathspey</i> , 11	Mrs M'Intosh of Raigmore, . . . . .	<i>Strathspey</i> , 6
Dainty Davie, . . . . .	<i>Strathspey</i> , 22	Mrs M'Pherson of Cluny, . . . . .	<i>Strathspey</i> , 3
Deil among the Tailors, The . . . . .	<i>Reel</i> , 5	North of the Grampians, . . . . .	<i>Strathspey</i> , 19
Delvin House, . . . . .	<i>Reel</i> , 19	Prince Arthur's First Jig in 1858, . . . . .	33
Delvin Side, . . . . .	<i>Strathspey</i> , 17	Prince Arthur's Highland Fling, . . . . .	<i>Strathspey</i> , 7
Dunse Dings A', . . . . .	<i>Reel</i> , 4	Prince Consort's, The . . . . .	<i>Reel</i> , 1
Duchess' Slipper, The . . . . .	<i>Strathspey</i> , 26	Prince Consort's Gillies, The . . . . .	<i>Jig</i> , 32
Eager's, . . . . .	<i>Strathspey</i> , 5	Prince of Wales, The . . . . .	<i>Reel</i> , 2
Fife Hunt, . . . . .	<i>Reel</i> , 20	Prince of Wales, The . . . . .	<i>Jig</i> , 31
Flora M'Donald, . . . . .	<i>Reel</i> , 17	Princess Alice, The . . . . .	<i>Jig</i> , 33
Francis Sitwell, . . . . .	<i>Strathspey</i> , 30	Princess Royal's, The . . . . .	<i>Irish Jig</i> , 31
Frolicsome Paddy O' Rourke, . . . . .	<i>Irish Jig</i> , 34	Queen's Welcome to Dee Side, The . . . . .	<i>Strathspey</i> , 1
Glen Truim, . . . . .	<i>Strathspey</i> , 16	Raigmore House, . . . . .	<i>Reel</i> , 6
Green Grow the Rashes O, . . . . .	<i>Reel</i> , 12	Sandy o'er the Lea, . . . . .	<i>Reel</i> , 8
Harvest Home, . . . . .	<i>Strathspey</i> , 8	Torry Burn, . . . . .	<i>Reel</i> , 13
Isle of Skye, . . . . .	<i>Reel</i> , 28	Tulloch Gorum, . . . . .	<i>Strathspey</i> , 14
Jamie Gow, Crathie Bellman, . . . . .	<i>Jig</i> , 34	Welcome to your Feet again, . . . . .	<i>Strathspey</i> , 21
Jenny Dang the Weaver, . . . . .	<i>Reel</i> , 9	Whigs of Fife, The . . . . .	<i>Reel</i> , 23
John Roy Stuart, . . . . .	<i>Strathspey</i> , 23	Willie Blair, . . . . .	<i>Strathspey</i> , 24

## BOOK II.

	Page		Page
Alloa Kirk, . . . . .	<i>Strathspey</i> , 12	Lasses of Stewarton, The . . . . .	<i>Reel</i> , 10
Antiquary, The . . . . .	<i>Reel</i> , 27	Lassie, look before you, . . . . .	<i>Strathspey</i> , 8
Athol Brose, . . . . .	<i>Strathspey</i> , 10	Loch Earn, . . . . .	<i>Reel</i> , 13
Ayrshire Lasses, . . . . .	<i>Strathspey</i> , 15	Loch Erroch Side, . . . . .	<i>Strathspey</i> , 18
Balmoral Bridge, . . . . .	<i>Strathspey</i> , 28	Lord Moira, . . . . .	<i>Strathspey</i> , 26
Balmoral Gillies, . . . . .	<i>Strathspey</i> , 14	M'Larin's, . . . . .	<i>Reel</i> , 22
Bonnie Annie, . . . . .	<i>Reel</i> , 21	Marquis of Queensberry, The . . . . .	<i>Reel</i> , 19
Bonnie Lass of Ballantrae, . . . . .	<i>Reel</i> , 24	Merry Lads of Ayr, The . . . . .	<i>Reel</i> , 15
Bridge of Yare, The . . . . .	<i>Reel</i> , 16	Miss Drummond of Perth, . . . . .	<i>Strathspey</i> , 20
Caber Feigh, . . . . .	<i>Reel</i> , 17	Miss Gibson, . . . . .	<i>Reel</i> , 29
Cameron's got his Wife again, . . . . .	<i>Strathspey</i> , 9	Miss Lyall's, . . . . .	<i>Strathspey</i> , 21
Corimonie's Rant, . . . . .	<i>Strathspey</i> , 7	Monymusk, . . . . .	<i>Strathspey</i> , 13
Crathie Lasses, . . . . .	<i>Jig</i> , 34	Neil Gow, . . . . .	<i>Strathspey</i> , 1
Daft Willie Dawson, . . . . .	<i>Strathspey</i> , 6	North Port, . . . . .	<i>Strathspey</i> , 25
Dalwhinnie, . . . . .	<i>Strathspey</i> , 22	Original Country Bumpkin, The . . . . .	<i>Country Dance</i> , 32
Drops of Brandy, . . . . .	<i>Irish Jig</i> , 30	Paul Wallace, . . . . .	<i>Reel</i> , 25
Eddie Ochiltree, . . . . .	<i>Strathspey</i> , 27	Perthshire Hunt, . . . . .	<i>Reel</i> , 3
Fecht about the Fireside, . . . . .	<i>Reel</i> , 18	Perthshire Volunteers, . . . . .	<i>Strathspey</i> , 3
Frank Walker, . . . . .	<i>Strathspey</i> , 29	Pretty Peggy, . . . . .	<i>Reel</i> , 9
Gair's Rant, . . . . .	<i>Strathspey</i> , 19	Prince Alfred, . . . . .	<i>Reel</i> , 28
Gillan a Drover, . . . . .	<i>Highland Jig</i> , 31	Push about the Jorum, . . . . .	<i>Reel</i> , 11
Glen Gelder, . . . . .	<i>Reel</i> , 14	Rachel Rae, . . . . .	<i>Reel</i> , 6
Haymakers' Jig, The . . . . .	<i>Country Dance</i> , 31	Reel of Cluny, The . . . . .	<i>Reel</i> , 2
Highland Donald Kissed Kitty, . . . . .	<i>Strathspey</i> , 11	Reel of Tulloch, The . . . . .	<i>Reel</i> , 1
Highlands of Banffshire, The . . . . .	<i>Strathspey</i> , 24	Robin's Nest, . . . . .	<i>Strathspey</i> , 16
Hill Head, . . . . .	<i>Reel</i> , 12	Sandy is my Darling, . . . . .	<i>Reel</i> , 20
Heights of Alma, The . . . . .	<i>Reel</i> , 32	Sir David Hunter Blair, . . . . .	<i>Reel</i> , 23
Howard's, . . . . .	<i>Reel</i> , 4	Sir Roger de Coverley, . . . . .	<i>Country Dance</i> , 30
Howard's, . . . . .	<i>Strathspey</i> , 4	Stumpie, . . . . .	<i>Strathspey</i> , 2
I'll Gang nae mair to yon Toun, . . . . .	<i>Reel</i> , 26	Teviot Bridge, . . . . .	<i>Jig</i> , 34
Jenny's Bawbee, . . . . .	<i>Reel</i> , 7	Tweeddale Club, The . . . . .	<i>Strathspey</i> , 17
Lady Baird, . . . . .	<i>Strathspey</i> , 5	Waverley Ball, The . . . . .	<i>Reel</i> , 5
Lady Doune, . . . . .	<i>Strathspey</i> , 23	Wind that Shakes the Barley, The . . . . .	<i>Reel</i> , 8



1

**THE ROYAL COLLECTION**  
OF  
**REELS STRATHSPEYS & JIGS.**  
BY  
**JOSEPH LOWE.**

THE QUEEN'S WELCOME TO DEE SIDE.

Strathspey.

Three systems of musical notation for a Strathspey. Each system consists of a grand staff with a treble and bass clef. The first system has a common time signature 'C'. The second and third systems have a key signature of one sharp (F#) and a common time signature 'C'. The music features a mix of eighth and sixteenth notes, with some triplets indicated by a '3' over the notes in the third system.

THE PRINCE CONSORT'S.

Reel.

By Jos. Lowe.

Three systems of musical notation for a Reel. Each system consists of a grand staff with a treble and bass clef. The first system has a common time signature 'C'. The second and third systems have a key signature of one sharp (F#) and a common time signature 'C'. The music features a mix of eighth and sixteenth notes, with some triplets indicated by a '3' over the notes in the third system.



## THE PRINCE OF WALES.

Reel.

By Jos. Lowe

## BALMORAL CASTLE.

Strathspey.

By Jos. Lowe.



## CLUNY CASTLE.

Reel.

By Jos. Lowe.

## MRS MC PHERSON OF CLUNY.

Strathspey.

By Jos. Lowe.



## DUNSE DINGS A'.

Reel.

Musical score for 'Dunse Dings A'.' in D major (two sharps) and common time. It consists of two systems of piano accompaniment. The first system has four measures, and the second system has four measures. The melody is in the right hand, featuring eighth and sixteenth notes, while the left hand provides a harmonic accompaniment with chords and single notes.

## THE MILLER OF DRONE

Strathspey.

Musical score for 'The Miller of Drone' in D major (two sharps) and common time. It consists of six systems of piano accompaniment. The first system has four measures, and the subsequent systems have four measures each. The melody is in the right hand, featuring eighth and sixteenth notes, while the left hand provides a harmonic accompaniment with chords and single notes. The piece concludes with a final cadence in the sixth system.



THE DEIL AMANG THE TAILORS. Reel.

Four systems of musical notation for a reel. Each system consists of a grand staff with a treble and bass clef. The key signature is two sharps (F# and C#), and the time signature is common time (C). The melody is written in the treble clef, and the accompaniment is in the bass clef. The first system has four measures. The second system has five measures. The third system has five measures. The fourth system has five measures. The piece concludes with a double bar line.

EAGER'S.

Strathspey

By Jos. Lowe.

Three systems of musical notation for a strathspey. Each system consists of a grand staff with a treble and bass clef. The key signature is two sharps (F# and C#), and the time signature is common time (C). The melody is written in the treble clef, and the accompaniment is in the bass clef. The first system has four measures. The second system has four measures. The third system has four measures. The piece concludes with a double bar line. There are triplets marked with a '3' in the melody of the first two systems.

LOWE'S ROYAL COLLECTION. BOOK 1<sup>st</sup>



## RAIGMORE HOUSE.

Reel.

By Jos. Lowe.

Four systems of piano music for 'Raigmore House'. Each system consists of a grand staff with a treble and bass clef. The key signature is one sharp (F#) and the time signature is common time (C). The music features a mix of eighth and sixteenth notes in the treble, with block chords and some single notes in the bass.

## MRS MC INTOSH OF RAIGMORE'S. Strathspey. By Jos. Lowe.

Three systems of piano music for 'Mrs Mc Intosh of Raigmore's'. Each system consists of a grand staff with a treble and bass clef. The key signature is one sharp (F#) and the time signature is common time (C). The music includes triplets in the treble and block chords in the bass.



## THE BONNIE BIRKS OF BALMORAL. Reel. By Jos. Lowe.

Handwritten musical score for 'The Bonnie Birks of Balmoral' Reel. The score is written for piano in treble and bass clefs, with a key signature of one sharp (F#) and a common time signature (C). The melody is in the treble clef, and the accompaniment is in the bass clef. The piece consists of four measures, each with a repeat sign at the end. The first measure has a fermata over the final note. The second measure has a fermata over the final note. The third measure has a fermata over the final note. The fourth measure has a fermata over the final note.

## PRINCE ARTHUR'S HIGHLAND FLING. Strathspey. By Jos. Lowe.

Handwritten musical score for 'Prince Arthur's Highland Fling' Strathspey. The score is written for piano in treble and bass clefs, with a key signature of one sharp (F#) and a common time signature (C). The melody is in the treble clef, and the accompaniment is in the bass clef. The piece consists of four measures, each with a repeat sign at the end. The first measure has a fermata over the final note. The second measure has a fermata over the final note. The third measure has a fermata over the final note. The fourth measure has a fermata over the final note.



## SANDY O'ER THE LEA.

Reel.

Four systems of musical notation for the reel 'SANDY O'ER THE LEA.' Each system consists of a grand staff with a treble and bass clef. The key signature is one sharp (F#) and the time signature is common time (C). The melody is written in the treble clef, and the accompaniment is in the bass clef. The piece is in 4/4 time and consists of 16 measures.

## HARVEST HOME.

Strathspey.

Three systems of musical notation for the strathspey 'HARVEST HOME.' Each system consists of a grand staff with a treble and bass clef. The key signature is one sharp (F#) and the time signature is common time (C). The melody is written in the treble clef, and the accompaniment is in the bass clef. The piece is in 4/4 time and consists of 16 measures. The notation includes triplets, indicated by a '3' over the notes.



## JENNY DANG THE WEAVER.

Reel.

Handwritten musical score for the reel 'Jenny Dang the Weaver'. The score is written for piano in treble and bass clefs, with a key signature of one sharp (F#) and a common time signature (C). The music is arranged in four systems, each with a treble and bass staff. The first system begins with a forte (f) dynamic marking. The melody is primarily in the treble staff, while the bass staff provides a harmonic accompaniment with chords and single notes. The piece concludes with a final double bar line and a forte (f) dynamic marking.

## THE MARQUIS OF HUNTLY'S HIGHLAND FLING. Strathspey.

Handwritten musical score for the strathspey 'The Marquis of Huntly's Highland Fling'. The score is written for piano in treble and bass clefs, with a key signature of one sharp (F#) and a common time signature (C). The music is arranged in three systems, each with a treble and bass staff. The first system begins with a forte (f) dynamic marking. The melody is primarily in the treble staff, while the bass staff provides a harmonic accompaniment with chords and single notes. The piece concludes with a final double bar line and a forte (f) dynamic marking.



## CHARLIE STUART.

Reel.

Three systems of piano accompaniment for the Charlie Stuart Reel. Each system consists of a grand staff with a treble and bass clef. The key signature is one sharp (F#) and the time signature is common time (C). The first system shows the initial melody in the treble and a simple harmonic accompaniment in the bass. The second and third systems continue the melody with more complex rhythmic patterns and sustained chords in the bass.

## LADY MARY RAMSAY.

Strathspey.

Four systems of piano accompaniment for the Lady Mary Ramsay Strathspey. The notation follows the same grand staff format as the first piece. The key signature is one sharp (F#) and the time signature is common time (C). The first system introduces the melody. The second system includes a repeat sign in the treble. The third system features a trill in the treble. The fourth system includes a triplet of eighth notes in the treble, marked with a '3' above it, and the text 'ad lib.' below it, indicating a free variation or improvisation.



## LADY MARY HOPE VERE

Reel.

By Jos. Lowe.

Three systems of piano accompaniment for the reel 'Lady Mary Hope Vere'. Each system consists of a grand staff with a treble and bass clef. The key signature is one sharp (F#) and the time signature is common time (C). The first system has 5 measures, the second has 5 measures, and the third has 5 measures. The melody is primarily in the treble clef, while the bass clef provides harmonic support with chords and single notes.

## CRAIGIE HALL.

Strathspey.

By Jos. Lowe.

Five systems of piano accompaniment for the strathspey 'Craigie Hall'. Each system consists of a grand staff with a treble and bass clef. The key signature is one sharp (F#) and the time signature is common time (C). The first system has 5 measures, the second has 5 measures, the third has 5 measures, the fourth has 5 measures, and the fifth has 5 measures. The melody is primarily in the treble clef, while the bass clef provides harmonic support with chords and single notes. Some measures in the treble clef feature triplets, indicated by a '3' over the notes.



## GREEN GROW THE RASHES O!

Reel.

Three systems of musical notation for the reel 'Green Grow the Rashes O!'. Each system consists of a grand staff with a treble and bass clef. The key signature is one sharp (F#) and the time signature is common time (C). The melody is written in the treble clef, and the bass line is in the bass clef. The music features a mix of eighth and sixteenth notes, with some triplet markings.

## LADY ANN HOPE.

Strathspey.

Four systems of musical notation for the strathspey 'Lady Ann Hope'. Each system consists of a grand staff with a treble and bass clef. The key signature is one sharp (F#) and the time signature is common time (C). The melody is written in the treble clef, and the bass line is in the bass clef. The music features a mix of eighth and sixteenth notes, with some triplet markings. The fourth system includes a double bar line and a key signature change to one sharp (F#).



## TORRY BURN.

Reel.

Three systems of musical notation for the 'Torry Burn' Reel. Each system consists of a grand staff with a treble and bass clef. The key signature is one sharp (F#) and the time signature is common time (C). The first system ends with a repeat sign and a fermata. The second system ends with a repeat sign. The third system ends with a repeat sign and a fermata. A small number '8' is visible at the end of the first system's bass line.

## JOHNNY PRINGLE.

Strathspey.

Four systems of musical notation for the 'Johnny Pringle' Strathspey. Each system consists of a grand staff with a treble and bass clef. The key signature is one sharp (F#) and the time signature is common time (C). The first system ends with a repeat sign. The second system ends with a repeat sign. The third system ends with a repeat sign. The fourth system ends with a repeat sign and a fermata.



THE BOB O' FETTERCAIRN

Reel.

Four systems of piano accompaniment for the reel 'THE BOB O' FETTERCAIRN'. Each system consists of a grand staff with a treble and bass clef. The key signature is one sharp (F#) and the time signature is common time (C). The music features a mix of eighth and sixteenth notes in the treble, with a steady bass line. Dynamics include *f* (forte) and *sf* (sforzando). The piece concludes with a double bar line and repeat dots.

TULLOCH GORUM.

Strathspey.

Three systems of piano accompaniment for the strathspey 'TULLOCH GORUM'. Each system consists of a grand staff with a treble and bass clef. The key signature is one sharp (F#) and the time signature is common time (C). The melody in the treble is characterized by dotted rhythms and sixteenth-note patterns. Dynamics include *f* (forte) and *sf* (sforzando). The piece concludes with a double bar line and repeat dots.



## CAPT BYNG.

## Reel.

Three systems of musical notation for the reel 'CAPT BYNG.'. Each system consists of a grand staff with a treble clef and a bass clef. The key signature is one sharp (F#) and the time signature is common time (C). The first system has a repeat sign at the end. The second system has a repeat sign at the end. The third system has a repeat sign at the end.

## LADY CHARLOTTE CAMPBELL.

## Strathspey.

Three systems of musical notation for the strathspey 'LADY CHARLOTTE CAMPBELL.'. Each system consists of a grand staff with a treble clef and a bass clef. The key signature is one sharp (F#) and the time signature is common time (C). The first system has a repeat sign at the end. The second system has a repeat sign at the end. The third system has a repeat sign at the end.



## THE LAD WI' THE KILT.

Reel.

By Jos. Lowe.

Three systems of musical notation for the reel 'The Lad wi' the Kilt'. Each system consists of a grand staff with a treble and bass clef. The key signature is one sharp (F#) and the time signature is common time (C). The first system has 8 measures. The second system has 8 measures. The third system has 8 measures, ending with a double bar line.

## GLEN TRUIM.

Strathspey.

By Jos. Lowe.

Three systems of musical notation for the strathspey 'Glen Truim'. Each system consists of a grand staff with a treble and bass clef. The key signature is one sharp (F#) and the time signature is common time (C). The first system has 8 measures. The second system has 8 measures. The third system has 8 measures, ending with a double bar line. The notation includes various musical symbols such as notes, rests, and bar lines.



FLORA M<sup>c</sup> DONALD.

## Reel.

Three systems of piano accompaniment for the reel 'FLORA M<sup>c</sup> DONALD.'. Each system consists of a grand staff with a treble and bass clef. The key signature is one sharp (F#) and the time signature is common time (C). The melody is primarily in the treble clef, featuring eighth and sixteenth notes, while the bass clef provides a harmonic accompaniment with chords and single notes.

## DELVIN SIDE.

## Strathspey.

Four systems of piano accompaniment for the strathspey 'DELVIN SIDE.'. Each system consists of a grand staff with a treble and bass clef. The key signature is one sharp (F#) and the time signature is common time (C). The melody is primarily in the treble clef, featuring eighth and sixteenth notes, while the bass clef provides a harmonic accompaniment with chords and single notes. The piece includes repeat signs and a double bar line.



## BIRK HALL.

Reel.

By Jos. Lowe.

Handwritten musical score for the Birk Hall Reel. It consists of three systems of piano accompaniment, each with a treble and bass staff joined by a brace. The key signature is one flat (B-flat major or D minor), and the time signature is common time (C). The first system includes a repeat sign at the end. The second system features a series of chords in the bass line. The third system continues the melodic and harmonic development.

## ALLT GHIUSACH.

Strathspey.

By Jos. Lowe.

Handwritten musical score for the Allt Ghiusach Strathspey. It consists of four systems of piano accompaniment, each with a treble and bass staff joined by a brace. The key signature is one flat (B-flat major or D minor), and the time signature is common time (C). The first system includes a repeat sign at the end. The second system features a series of chords in the bass line. The third system continues the melodic and harmonic development. The fourth system includes a repeat sign at the end.



## DELVIN HOUSE.

Reel

Three systems of musical notation for a reel. Each system consists of a grand staff with a treble and bass clef. The first system has a treble staff with a melody and a bass staff with a simple accompaniment. The second and third systems have more complex accompaniment in the bass staff, including some triplets and accidentals. The key signature has one sharp (F#) and the time signature is common time (C).

NORTH OF THE GRAMPIANS. Strathspey. By Cap<sup>t</sup> Fraser.

Four systems of musical notation for a strathspey. Each system consists of a grand staff with a treble and bass clef. The first system has a treble staff with a melody and a bass staff with a simple accompaniment. The second and third systems have more complex accompaniment in the bass staff, including some triplets and accidentals. The key signature has one sharp (F#) and the time signature is common time (C). The fourth system features several triplets in both the treble and bass staves.



## FIFE HUNT.

## Reel.

Three systems of musical notation for the reel 'FIFE HUNT'. Each system consists of a grand staff with a treble and bass clef. The first system has a treble staff with a key signature of one sharp (F#) and a common time signature (C). The bass staff has a common time signature (C). The second and third systems have a treble staff with a key signature of one sharp (F#) and a common time signature (C). The bass staff has a common time signature (C). The music is written in a style typical of Scottish fiddle or piano accompaniment for a fife.

## LADY LOUDON.

## Strathspey.

Four systems of musical notation for the strathspey 'LADY LOUDON'. Each system consists of a grand staff with a treble and bass clef. The first system has a treble staff with a key signature of one sharp (F#) and a common time signature (C). The bass staff has a common time signature (C). The second, third, and fourth systems have a treble staff with a key signature of one sharp (F#) and a common time signature (C). The bass staff has a common time signature (C). The music is written in a style typical of Scottish fiddle or piano accompaniment for a strathspey.



## THE ARGYLE BOWLING-GREEN.

Reel.

Three systems of musical notation for a piano. Each system consists of a grand staff with a treble and bass clef. The first system has a common time signature 'C'. The melody is in the treble clef, and the bass clef contains a simple accompaniment of chords. The second and third systems continue the melody and accompaniment.

## WELCOME TO YOUR FEET AGAIN.

Strathspey.

Four systems of musical notation for a piano. Each system consists of a grand staff with a treble and bass clef. The first system has a common time signature 'C'. The melody is in the treble clef, and the bass clef contains a simple accompaniment of chords. The second, third, and fourth systems continue the melody and accompaniment.



## THE BIRKS OF ABERGELDIE.

Reel.

Three systems of musical notation for the reel 'The Birks of Abergeldie'. Each system consists of a grand staff with a treble and bass clef. The key signature is one flat (B-flat) and the time signature is common time (C). The first system shows the beginning of the piece with a treble staff featuring eighth and sixteenth notes and a bass staff with chords. The second system continues the melody in the treble and accompaniment in the bass. The third system concludes the piece with a final cadence in both staves.

## DAINTY DAVIE.

Strathspey.

Three systems of musical notation for the strathspey 'Dainty Davie'. Each system consists of a grand staff with a treble and bass clef. The key signature is one flat (B-flat) and the time signature is common time (C). The first system begins with a treble staff featuring dotted rhythms and a bass staff with chords. The second system continues the melody with various ornaments and a consistent bass accompaniment. The third system concludes the piece with a final cadence in both staves.



## THE WHIGS OF FIFE.

Reel.

Three systems of musical notation for the reel 'The Whigs of Fife'. Each system consists of a grand staff with a treble and bass clef. The key signature is one flat (B-flat), and the time signature is common time (C). The first system begins with a forte (f) dynamic marking. The melody is primarily in the treble clef, while the bass clef provides a harmonic accompaniment with chords and single notes. The piece concludes with a repeat sign and a final forte (f) dynamic marking.

## JOHN ROY STUART.

Strathspey.

Three systems of musical notation for the strathspey 'John Roy Stuart'. Each system consists of a grand staff with a treble and bass clef. The key signature is one flat (B-flat), and the time signature is common time (C). The melody is primarily in the treble clef, with the bass clef providing a harmonic accompaniment. The piece features various musical ornaments and concludes with a repeat sign.



## ARCHIE MENZIES.

Reel.

By Jos. Lowe.

## WILLIE BLAIR.

Strathspey.

By Jos. Lowe.



## THE CAMERONIAN RANT.

## Reel

Handwritten musical score for 'The Cameronian Rant' Reel. The score is written for piano in G major (one sharp) and common time (C). It consists of four systems of two staves each. The first system begins with a forte (f) dynamic marking. The melody is characterized by rapid sixteenth-note passages. The bass line provides a steady accompaniment with chords and single notes. The piece concludes with a final double bar line and a forte (f) dynamic marking.

## MISS ANN AMELIA STEWART'S.

## Strathspey.

Handwritten musical score for 'Miss Ann Amelia Stewart's' Strathspey. The score is written for piano in G major (one sharp) and common time (C). It consists of three systems of two staves each. The melody features a mix of eighth and sixteenth notes with some grace notes. The bass line is a simple accompaniment. The piece ends with a final double bar line.



## CLYDE SIDE LASSES.

Reel.

Three systems of piano accompaniment for the reel 'CLYDE SIDE LASSES.' Each system consists of a grand staff with a treble and bass clef. The key signature is one flat (B-flat) and the time signature is common time (C). The first system begins with a forte (f) dynamic. The melody in the treble clef is composed of eighth and sixteenth notes, while the bass clef provides a harmonic accompaniment of chords and single notes. The second and third systems continue the piece, with the third system ending in a repeat sign and a forte (f) dynamic.

## THE DUCHESS' SLIPPER.

Strathspey.

Four systems of piano accompaniment for the strathspey 'THE DUCHESS' SLIPPER.' Each system consists of a grand staff with a treble and bass clef. The key signature is one flat (B-flat) and the time signature is common time (C). The melody in the treble clef features a mix of eighth, sixteenth, and dotted notes, often with slurs. The bass clef provides a harmonic accompaniment of chords and single notes. The piece concludes with a repeat sign at the end of the fourth system.



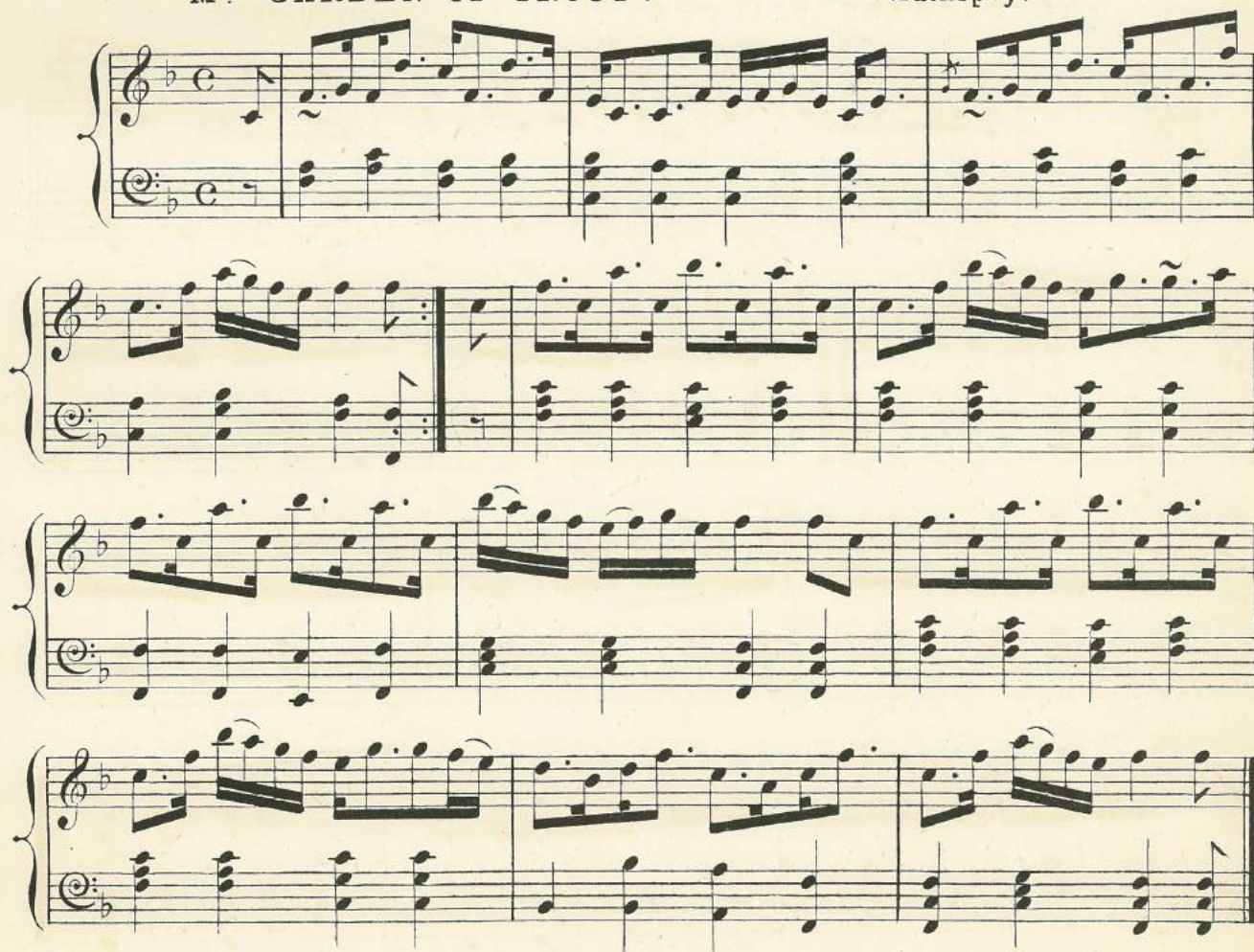
## LADY HARRIET HOPE.

Reel.



## MRS GARDEN OF TROUP.

Strathspey.





## ISLE OF SKYE.

Reel.

Three systems of piano accompaniment for the reel 'ISLE OF SKYE'. Each system consists of a grand staff with a treble and bass clef. The key signature is one flat (B-flat) and the time signature is common time (C). The first system has five measures. The second and third systems each have four measures. The music features a mix of eighth and sixteenth notes in the treble, with block chords and some moving bass lines in the bass.

## LADY ELIZABETH LINDSAY.

Strathspey.

Four systems of piano accompaniment for the strathspey 'LADY ELIZABETH LINDSAY'. Each system consists of a grand staff with a treble and bass clef. The key signature is one flat (B-flat) and the time signature is common time (C). The first system has four measures. The second system has four measures, with a repeat sign at the end of the first measure. The third and fourth systems each have four measures. The music features a mix of eighth and sixteenth notes in the treble, with block chords and some moving bass lines in the bass.



## LADY MADELINA SINCLAIR'S BIRTH DAY. Reel.

Three systems of piano accompaniment for a reel. The music is in G minor (one flat) and common time (C). The first system consists of two measures. The second system consists of four measures. The third system consists of four measures, with a fortissimo (ff) dynamic marking in the second measure. The piece concludes with a double bar line.

## BRECHIN CASTLE.

Strathspey.

Four systems of piano accompaniment for a strathspey. The music is in G minor (one flat) and common time (C). The first system consists of two measures, with a fortissimo (f) dynamic marking in the first measure. The second system consists of two measures, with a fortissimo (f) dynamic marking in the first measure. The third system consists of two measures. The fourth system consists of two measures, with a fortissimo (f) dynamic marking in the first measure. The piece concludes with a double bar line.



## LADY MONTGOMERY.

Reel.

Three systems of piano accompaniment for the 'Lady Montgomery' Reel. Each system consists of a grand staff with a treble and bass clef. The key signature is one flat (B-flat), and the time signature is common time (C). The first system begins with a forte (f) dynamic marking. The music features a mix of eighth and sixteenth notes in the treble, with block chords and single notes in the bass. The second and third systems continue the melody and accompaniment, with the third system ending in a final chord marked with a forte (f) dynamic.

## FRANCIS SITWELL.

Strathspey.

Four systems of piano accompaniment for the 'Francis Sitwell' Strathspey. Each system consists of a grand staff with a treble and bass clef. The key signature is one flat (B-flat), and the time signature is common time (C). The first system begins with a treble clef and a common time signature. The music features a mix of eighth and sixteenth notes in the treble, with block chords and single notes in the bass. The second and third systems continue the melody and accompaniment, with the third system ending in a final chord marked with a forte (f) dynamic.



31

# SELECTION OF JIGS

As Danced at  
**HER MAJESTY'S BALLS**  
**BALMORAL.**

THE PRINCE OF WALES.

Jig.

By Jos. Lowe.

THE PRINCESS ROYAL'S.

Irish Jig.

By Jos. Lowe.



## COURT FROLIC'S.

Jig.

By Jos. Lowe.

Two systems of piano accompaniment for 'COURT FROLIC'S.' The first system consists of two staves (treble and bass clef) with a key signature of one sharp (F#) and a 6/8 time signature. The melody is in the treble staff, and the bass staff provides harmonic support with chords and single notes. The second system continues the piece, featuring a repeat sign and a double bar line. The music is written in a simple, accessible style typical of early 20th-century piano collections.

## THE PRINCE CONSORT'S GILLIES.

Jig.

By Jos. Lowe.

Two systems of piano accompaniment for 'THE PRINCE CONSORT'S GILLIES.' The first system consists of two staves (treble and bass clef) with a key signature of one sharp (F#) and a 6/8 time signature. The melody is in the treble staff, and the bass staff provides harmonic support with chords and single notes. The second system continues the piece, featuring a repeat sign and a double bar line. The music is written in a simple, accessible style typical of early 20th-century piano collections. The score includes various musical notations such as slurs, accents, and dynamic markings like 'f' (forte) and 'ff' (fortissimo). A 'Ped.' (pedal) marking is also present in the second system.



## PRINCE ARTHUR'S FIRST JIG IN 1858.

By Jos. Lowe.

Musical score for Prince Arthur's First Jig in 1858, by Jos. Lowe. The score is in 6/8 time, key of D major (two sharps). It consists of three systems of piano accompaniment. The first system starts with a forte (*f*) dynamic and an accent (^) on the first note. The second system features a repeat sign. The third system ends with a forte (*f*) dynamic and a repeat sign.

## THE PRINCESS ALICE'S JIG.

By Jos. Lowe.

Musical score for The Princess Alice's Jig, by Jos. Lowe. The score is in 6/8 time, key of D major (two sharps). It consists of five systems of piano accompaniment. The first system starts with a forte (*f*) dynamic. The second system ends with a repeat sign. The third system starts with a repeat sign. The fourth system ends with a forte (*f*) dynamic and an accent (^) on the last note. The fifth system is marked "Last time." and ends with a forte (*f*) dynamic and a repeat sign.



## JAMIE GOW, CRATHIE BELLMAN'S. Jig. By Jos. Lowe.

Musical score for "JAMIE GOW, CRATHIE BELLMAN'S. Jig." by Jos. Lowe. The score is written for piano in 6/8 time, featuring a treble and bass staff. It consists of five systems of music. The first system begins with a treble staff and a bass staff. The second system continues the melody and accompaniment. The third system includes a forte (f) dynamic marking. The fourth system continues the piece. The fifth system concludes the jig with a final cadence. The key signature is one sharp (F#) and the time signature is 6/8.

## FROLICSOME PADDY O ROURKE. Irish Jig.

Musical score for "FROLICSOME PADDY O ROURKE. Irish Jig." The score is written for piano in 6/8 time, featuring a treble and bass staff. It consists of two systems of music. The first system begins with a treble staff and a bass staff. The second system continues the melody and accompaniment. The key signature is one sharp (F#) and the time signature is 6/8.



THE ROYAL COLLECTION  
OF  
REELS, STRATHSPEYS & JIGS  
BY  
JOSEPH LOWE.

THE REEL OF TULLOCH.

NEIL GOW.

Strathspey



## THE REEL OF CLUNY.

By Jos. Lowe

Four systems of musical notation for 'THE REEL OF CLUNY.' Each system consists of a grand staff with a treble and bass clef. The key signature is two sharps (F# and C#), and the time signature is common time (C). The melody is written in the treble clef, and the accompaniment is in the bass clef. The piece is a reel, characterized by its 4/4 time signature and lack of a repeat sign at the end.

## STUMPIE.

Strathspey.

Three systems of musical notation for 'STUMPIE. Strathspey.' Each system consists of a grand staff with a treble and bass clef. The key signature is two sharps (F# and C#), and the time signature is common time (C). The melody is written in the treble clef, and the accompaniment is in the bass clef. The piece is a strathspey, characterized by its 4/4 time signature and the presence of a repeat sign at the end of the first system.



## PERTHSHIRE HUNT.

Reel.

Three systems of musical notation for the 'PERTHSHIRE HUNT. Reel.' The music is written in treble and bass staves, featuring a key signature of two sharps (F# and C#) and a common time signature (C). The first system consists of two staves. The second system consists of two staves. The third system consists of two staves. The music is a reel, characterized by its 2/4 time signature and the presence of repeat signs at the end of each system.

## PERTHSHIRE VOLUNTEERS.

Strathspey.

Four systems of musical notation for the 'PERTHSHIRE VOLUNTEERS. Strathspey.' The music is written in treble and bass staves, featuring a key signature of two sharps (F# and C#) and a common time signature (C). The first system consists of two staves. The second system consists of two staves. The third system consists of two staves. The fourth system consists of two staves. The music is a strathspey, characterized by its 2/4 time signature and the presence of repeat signs at the end of each system.



## HOWARD'S.

## Reel.

By Jos. Lowe.

Howard's Reel by Jos. Lowe. The score is written for piano in G major (one sharp) and common time. It consists of four systems of music, each with a grand staff (treble and bass clef). The melody is primarily in the treble clef, featuring eighth and sixteenth notes, while the bass clef provides a harmonic accompaniment with chords and single notes. The piece concludes with a double bar line.

## HOWARD'S.

## Strathspey.

By Jos. Lowe.

Howard's Strathspey by Jos. Lowe. The score is written for piano in G major (one sharp) and common time. It consists of three systems of music, each with a grand staff (treble and bass clef). The melody in the treble clef includes several triplet markings (indicated by a '3' over the notes). The bass clef provides a steady accompaniment. The piece ends with a double bar line.



## THE WAVERLEY BALL.

Reel.

By Jos. Lowe.

Five systems of piano accompaniment for 'The Waverley Ball'. Each system consists of a treble and bass staff joined by a brace. The key signature is one sharp (F#) and the time signature is common time (C). The music features a mix of eighth and sixteenth notes in the treble, with block chords and some moving bass lines in the bass. The piece concludes with a double bar line and repeat dots.

## LADY BAIRD'S.

Strathspey.

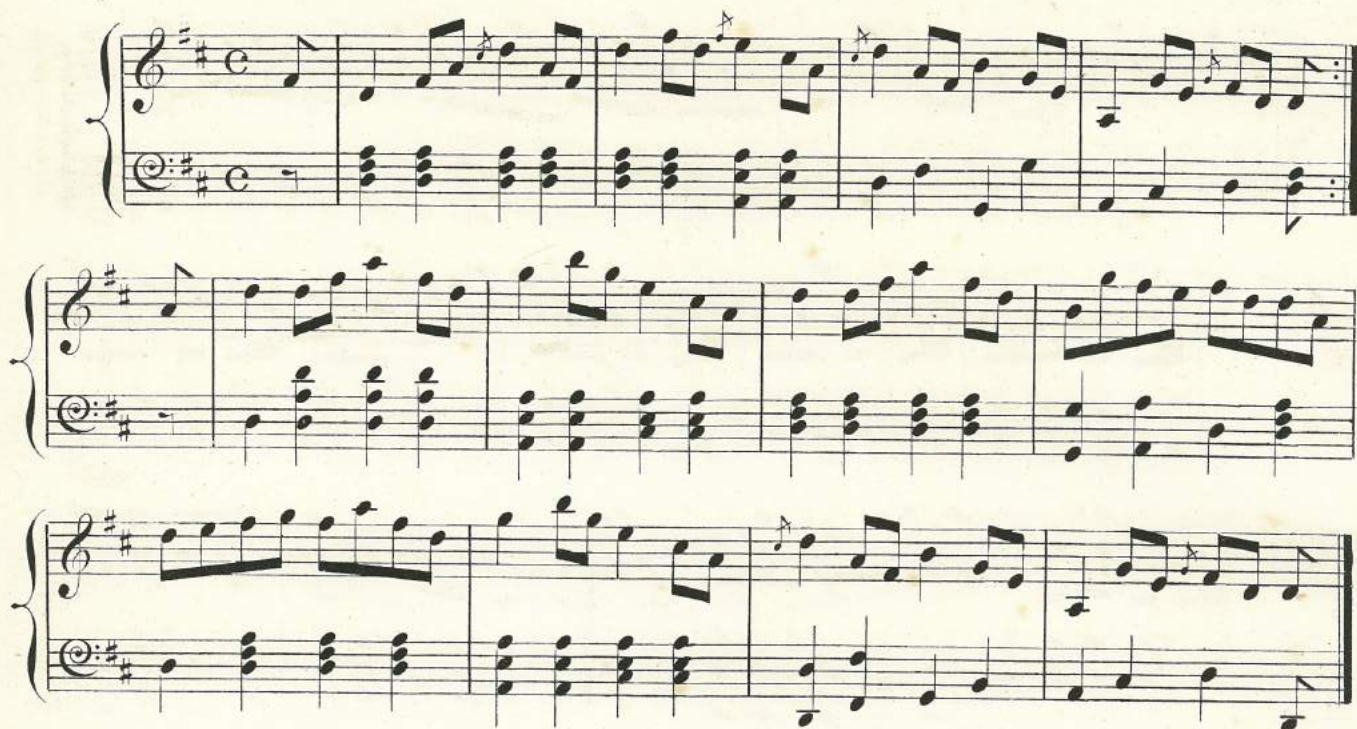
Two systems of piano accompaniment for 'Lady Baird's'. Each system consists of a treble and bass staff joined by a brace. The key signature is one sharp (F#) and the time signature is common time (C). The music features a mix of eighth and sixteenth notes in the treble, with block chords and some moving bass lines in the bass. The piece concludes with a double bar line and repeat dots.



## RACHEL RAE.

Reel.

By John Lowe Senr



## DAFT WILLIE DAWSON.

Strathspey.

By Jos. Lowe.



## JENNY'S BAWBEE.

Reel

Musical score for Jenny's Bawbee, a Reel. The score consists of three systems of piano accompaniment. Each system has a treble and bass staff joined by a brace. The key signature is one sharp (F#) and the time signature is common time (C). The first system starts with a forte (f) dynamic. The second system continues the melody and accompaniment. The third system concludes with a final cadence marked with a double bar line and a repeat sign.

## CORIMONIE'S RANT.

Strathspey.

Musical score for Corimonie's Rant, a Strathspey. The score consists of five systems of piano accompaniment. Each system has a treble and bass staff joined by a brace. The key signature is one sharp (F#) and the time signature is common time (C). The first system starts with a forte (f) dynamic. The second system continues the melody and accompaniment. The third system continues the melody and accompaniment. The fourth system continues the melody and accompaniment. The fifth system concludes with a final cadence marked with a double bar line and a repeat sign.



## THE WIND THAT SHAKES THE BARLEY.

Reel.

Three systems of piano accompaniment for the reel 'The Wind That Shakes the Barley'. Each system consists of a grand staff with a treble and bass clef. The key signature is one sharp (F#) and the time signature is common time (C). The music features a mix of eighth and sixteenth notes in the treble and block chords in the bass.

## LASSIE LOOK BEFORE YOU.

Strathspey.

Four systems of piano accompaniment for the strathspey 'Lassie Look Before You'. Each system consists of a grand staff with a treble and bass clef. The key signature is one sharp (F#) and the time signature is common time (C). The music includes various ornaments (flourishes) and dynamic markings such as *f* (forte) and *ff* (fortissimo). The strathspey style is characterized by its complex, often syncopated, rhythmic patterns.



## PRETTY PEGGY.

Reel.



## CAMERON'S GOT HIS WIFE AGAIN.

Strathspey.





## THE LASSES OF STEWARTON.

Reel

The musical score for 'The Lasses of Stewarton' is a reel in G major (one sharp) and 2/4 time. It consists of four systems of piano accompaniment. The first system shows the initial melody in the treble and a simple bass line. The second system introduces a more complex bass line with chords. The third system continues the melody and bass line. The fourth system features a more intricate bass line with chords and a final cadence. The score is written for piano, with treble and bass staves joined by a brace.

## ATHOL BROSE.

Strathspey.

The musical score for 'Athol Brose' is a strathspey in G major (one sharp) and 2/4 time. It consists of three systems of piano accompaniment. The first system shows the initial melody in the treble and a simple bass line. The second system introduces a more complex bass line with chords. The third system continues the melody and bass line. The score is written for piano, with treble and bass staves joined by a brace.



## PUSH ABOUT THE JORUM.

Reel.

Three systems of piano accompaniment for the reel 'Push About the Jorum'. Each system consists of a grand staff with a treble and bass clef. The key signature is one sharp (F#) and the time signature is common time (C). The first system begins with a forte (f) dynamic marking. The melody in the treble clef is characterized by eighth-note patterns and slurs. The bass clef provides a harmonic accompaniment with chords and single notes. The second system continues the melody and accompaniment. The third system concludes the piece with a final forte (f) dynamic marking.

## HIGHLAND DONALD KISSED KITTY.

Strathspey.

Four systems of piano accompaniment for the strathspey 'Highland Donald Kissed Kitty'. Each system consists of a grand staff with a treble and bass clef. The key signature is one sharp (F#) and the time signature is common time (C). The first system begins with a forte (f) dynamic marking. The melody in the treble clef features a mix of eighth and sixteenth notes, often with slurs. The bass clef provides a harmonic accompaniment with chords and single notes. The second system includes a repeat sign. The third and fourth systems continue the melody and accompaniment, with the fourth system concluding the piece.



## HILL HEAD.

Reel.

By Rob<sup>t</sup> Lowe.

Four systems of piano accompaniment for the Hill Head Reel. Each system consists of a grand staff with a treble and bass clef. The key signature is one sharp (F#), and the time signature is common time (C). The music features a mix of eighth and sixteenth notes in the treble, with block chords and some moving bass lines in the bass. The first system includes a 'v' marking under the first bass note. The second system ends with a double bar line. The third system includes a 'x' marking above the final treble note. The fourth system ends with a double bar line and a sharp sign on the final bass note.

## ALLOA KIRK.

Strathspey.

By Jos. Lowe.

Three systems of piano accompaniment for the Alloa Kirk Strathspey. Each system consists of a grand staff with a treble and bass clef. The key signature is one sharp (F#), and the time signature is common time (C). The music features a mix of eighth and sixteenth notes in the treble, with block chords and some moving bass lines in the bass. The first system includes a 'v' marking under the first bass note. The second system includes a 'v' marking under the first bass note. The third system includes a 'v' marking under the first bass note and a '3' marking above the first treble note. The fourth system includes a '3' marking above the first treble note. The fifth system includes a '3' marking above the first treble note. The sixth system includes a '3' marking above the first treble note. The seventh system includes a '3' marking above the first treble note. The eighth system includes a '3' marking above the first treble note. The ninth system includes a '3' marking above the first treble note. The tenth system includes a '3' marking above the first treble note. The eleventh system includes a '3' marking above the first treble note. The twelfth system includes a '3' marking above the first treble note. The thirteenth system includes a '3' marking above the first treble note. The fourteenth system includes a '3' marking above the first treble note. The fifteenth system includes a '3' marking above the first treble note. The sixteenth system includes a '3' marking above the first treble note. The seventeenth system includes a '3' marking above the first treble note. The eighteenth system includes a '3' marking above the first treble note. The nineteenth system includes a '3' marking above the first treble note. The twentieth system includes a '3' marking above the first treble note. The twenty-first system includes a '3' marking above the first treble note. The twenty-second system includes a '3' marking above the first treble note. The twenty-third system includes a '3' marking above the first treble note. The twenty-fourth system includes a '3' marking above the first treble note. The twenty-fifth system includes a '3' marking above the first treble note. The twenty-sixth system includes a '3' marking above the first treble note. The twenty-seventh system includes a '3' marking above the first treble note. The twenty-eighth system includes a '3' marking above the first treble note. The twenty-ninth system includes a '3' marking above the first treble note. The thirtieth system includes a '3' marking above the first treble note. The thirty-first system includes a '3' marking above the first treble note. The thirty-second system includes a '3' marking above the first treble note. The thirty-third system includes a '3' marking above the first treble note. The thirty-fourth system includes a '3' marking above the first treble note. The thirty-fifth system includes a '3' marking above the first treble note. The thirty-sixth system includes a '3' marking above the first treble note. The thirty-seventh system includes a '3' marking above the first treble note. The thirty-eighth system includes a '3' marking above the first treble note. The thirty-ninth system includes a '3' marking above the first treble note. The fortieth system includes a '3' marking above the first treble note. The forty-first system includes a '3' marking above the first treble note. The forty-second system includes a '3' marking above the first treble note. The forty-third system includes a '3' marking above the first treble note. The forty-fourth system includes a '3' marking above the first treble note. The forty-fifth system includes a '3' marking above the first treble note. The forty-sixth system includes a '3' marking above the first treble note. The forty-seventh system includes a '3' marking above the first treble note. The forty-eighth system includes a '3' marking above the first treble note. The forty-ninth system includes a '3' marking above the first treble note. The fiftieth system includes a '3' marking above the first treble note. The fifty-first system includes a '3' marking above the first treble note. The fifty-second system includes a '3' marking above the first treble note. The fifty-third system includes a '3' marking above the first treble note. The fifty-fourth system includes a '3' marking above the first treble note. The fifty-fifth system includes a '3' marking above the first treble note. The fifty-sixth system includes a '3' marking above the first treble note. The fifty-seventh system includes a '3' marking above the first treble note. The fifty-eighth system includes a '3' marking above the first treble note. The fifty-ninth system includes a '3' marking above the first treble note. The sixtieth system includes a '3' marking above the first treble note. The sixty-first system includes a '3' marking above the first treble note. The sixty-second system includes a '3' marking above the first treble note. The sixty-third system includes a '3' marking above the first treble note. The sixty-fourth system includes a '3' marking above the first treble note. The sixty-fifth system includes a '3' marking above the first treble note. The sixty-sixth system includes a '3' marking above the first treble note. The sixty-seventh system includes a '3' marking above the first treble note. The sixty-eighth system includes a '3' marking above the first treble note. The sixty-ninth system includes a '3' marking above the first treble note. The seventieth system includes a '3' marking above the first treble note. The seventy-first system includes a '3' marking above the first treble note. The seventy-second system includes a '3' marking above the first treble note. The seventy-third system includes a '3' marking above the first treble note. The seventy-fourth system includes a '3' marking above the first treble note. The seventy-fifth system includes a '3' marking above the first treble note. The seventy-sixth system includes a '3' marking above the first treble note. The seventy-seventh system includes a '3' marking above the first treble note. The seventy-eighth system includes a '3' marking above the first treble note. The seventy-ninth system includes a '3' marking above the first treble note. The eightieth system includes a '3' marking above the first treble note. The eighty-first system includes a '3' marking above the first treble note. The eighty-second system includes a '3' marking above the first treble note. The eighty-third system includes a '3' marking above the first treble note. The eighty-fourth system includes a '3' marking above the first treble note. The eighty-fifth system includes a '3' marking above the first treble note. The eighty-sixth system includes a '3' marking above the first treble note. The eighty-seventh system includes a '3' marking above the first treble note. The eighty-eighth system includes a '3' marking above the first treble note. The eighty-ninth system includes a '3' marking above the first treble note. The ninetieth system includes a '3' marking above the first treble note. The ninety-first system includes a '3' marking above the first treble note. The ninety-second system includes a '3' marking above the first treble note. The ninety-third system includes a '3' marking above the first treble note. The ninety-fourth system includes a '3' marking above the first treble note. The ninety-fifth system includes a '3' marking above the first treble note. The ninety-sixth system includes a '3' marking above the first treble note. The ninety-seventh system includes a '3' marking above the first treble note. The ninety-eighth system includes a '3' marking above the first treble note. The ninety-ninth system includes a '3' marking above the first treble note. The hundredth system includes a '3' marking above the first treble note.



## LOCH EARN.

Reel.

Three systems of musical notation for the 'LOCH EARN. Reel.' The first system is a grand staff with a treble clef and a key signature of one sharp (F#). The second and third systems are also grand staves, with the second system featuring a treble clef and a key signature of one sharp, and the third system featuring a treble clef and a key signature of one sharp. The music is written in 2/4 time and consists of a single melodic line in the treble clef and a harmonic accompaniment in the bass clef.

## MONYMUSK.

Strathspey.

Four systems of musical notation for the 'MONYMUSK. Strathspey.' The first system is a grand staff with a treble clef and a key signature of one sharp (F#). The second, third, and fourth systems are also grand staves, with the second system featuring a treble clef and a key signature of one sharp, and the third and fourth systems featuring a treble clef and a key signature of one sharp. The music is written in 2/4 time and consists of a single melodic line in the treble clef and a harmonic accompaniment in the bass clef.



## GLEN GELDER.

Reel.

By Jos. Lowe.

## BALMORAL GILLIES.

Strathspey.

By Jos. Lowe.



## THE MERRY LADS OF AYR.

Reel.



## AYRSHIRE LASSES.

Strathspey.

By the Earl of Eglinton.





## THE BRIDGE OF YARE.

Reel.

By Jos. Lowe.

Musical score for 'The Bridge of Yare' Reel, composed by Jos. Lowe. The score is written for piano in C major, 2/4 time. It consists of three systems of music, each with a treble and bass staff joined by a brace. The first system has a repeat sign at the end. The second system has a repeat sign at the end. The third system has a repeat sign at the end.

## ROBIN'S NEST.

Strathspey.

By Jos. Lowe.

Musical score for 'Robin's Nest' Strathspey, composed by Jos. Lowe. The score is written for piano in C major, 2/4 time. It consists of four systems of music, each with a treble and bass staff joined by a brace. The first system has a repeat sign at the end. The second system has a repeat sign at the end. The third system has a repeat sign at the end. The fourth system has a repeat sign at the end. There are triplets marked with a '3' in the fourth system.



## CABER FEIGH.

Reel.



## THE TWEEDALE CLUB.

Strathspey.





## FECHT ABOUT THE FIRESIDE.

Reel.

Handwritten musical score for a reel. The score is written on three systems of grand staves (treble and bass clef). The first system begins with a treble clef, a common time signature 'C', and a key signature of one sharp (F#). The melody is written in the treble staff, and the bass staff provides a simple harmonic accompaniment. The second and third systems continue the melody and accompaniment. The piece concludes with a double bar line and repeat dots.

## LOCH ERROCH SIDE.

Strathspey.

Handwritten musical score for a strathspey. The score is written on four systems of grand staves. The first system begins with a treble clef, a common time signature 'C', and a key signature of one sharp (F#). The melody is written in the treble staff, and the bass staff provides a simple harmonic accompaniment. The second and third systems continue the melody and accompaniment. The piece concludes with a double bar line and repeat dots.



## THE MARQUIS OF QUEENSBERRY.

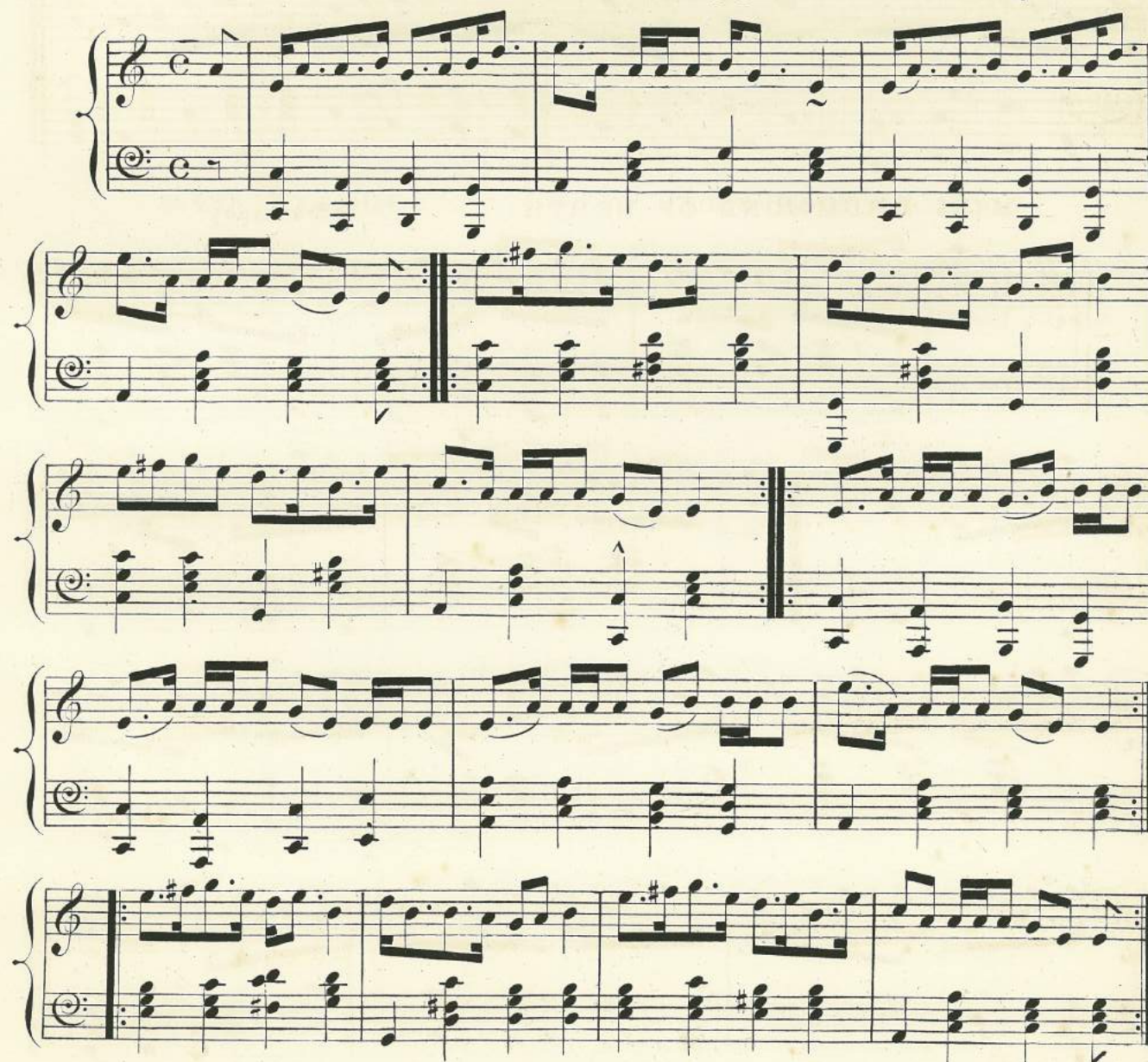
Reel.



## GAIR'S RANT.

Strathspey.

Very Old.





## SANDY IS MY DARLING.

Reel.

Very Old.

Three systems of piano accompaniment for the reel 'SANDY IS MY DARLING.' Each system consists of a grand staff with a treble and bass clef. The music is in common time (C) and features a mix of eighth and sixteenth notes, with some triplets. The first system ends with a repeat sign. The second system includes a key signature change to one sharp (F#) in the final measure. The third system concludes with a final cadence.

## MISS DRUMMOND OF PERTH.

Strathspey.

Three systems of piano accompaniment for the strathspey 'MISS DRUMMOND OF PERTH.' Each system consists of a grand staff with a treble and bass clef. The music is in common time (C) and features a mix of eighth and sixteenth notes, with some triplets. The first system includes a forte (f) dynamic marking. The second system includes a key signature change to one sharp (F#) in the final measure. The third system concludes with a final cadence.



## BONNIE ANNIE.

Reel.

Three systems of piano accompaniment for the 'Bonnie Annie' Reel. Each system consists of a grand staff with a treble and bass clef. The first system is in C major, the second in D major, and the third in E major. The music features a mix of eighth and sixteenth notes, with some triplets and slurs. The bass line is primarily composed of chords and single notes, while the treble line has more melodic movement.

## MISS LYALL'S.

Strathspey.

Four systems of piano accompaniment for 'Miss Lyall's' Strathspey. Each system consists of a grand staff with a treble and bass clef. The first system is in C major, the second in D major, the third in E major, and the fourth in F major. The music features a mix of eighth and sixteenth notes, with some triplets and slurs. The bass line is primarily composed of chords and single notes, while the treble line has more melodic movement.



## Mc LARIN'S.

Reel.

By Jos. Lowe.

Three systems of musical notation for the reel 'Mc LARIN'S'. Each system consists of a grand staff with a treble and bass clef. The first system begins with a treble clef and a common time signature 'C'. The melody is written in the treble staff, and the bass staff provides a harmonic accompaniment with chords and single notes. The second and third systems continue the piece, with the treble staff featuring more complex melodic lines and the bass staff providing a steady accompaniment. The piece concludes with a double bar line.

## DALWHINNIE.

Strathspey.

By Jos. Lowe.

Four systems of musical notation for the strathspey 'DALWHINNIE'. Each system consists of a grand staff with a treble and bass clef. The first system begins with a treble clef and a common time signature 'C'. The melody is written in the treble staff, and the bass staff provides a harmonic accompaniment. The second system includes a repeat sign in the treble staff. The third and fourth systems continue the piece, with the treble staff featuring more complex melodic lines and the bass staff providing a steady accompaniment. The piece concludes with a double bar line.



## SIR DAVID HUNTER BLAIR.

## Reel



## LADY DOUNE.

## Strathspey

The 'Strathspey' by Lady Doune is a six-system piano piece. It features a treble and bass staff throughout. The key signature is one flat (B-flat), and the time signature is common time (C). The melody in the treble staff is characterized by dotted rhythms and eighth-note patterns, typical of the strathspey genre. The bass staff provides a steady accompaniment with chords and moving lines. The piece includes a repeat sign in the third system and concludes with a final cadence in the sixth system.



BONNIE LASS OF BALLANTRAE. Reel. By Cap<sup>t</sup> Fraser.

Three systems of musical notation for the reel 'Bonnie Lass of Ballantrae'. Each system consists of a grand staff with a treble and bass clef. The key signature is one flat (B-flat), and the time signature is common time (C). The melody is written in the treble clef, and the accompaniment is in the bass clef. The first system has 8 measures, the second has 8 measures, and the third has 8 measures, ending with a double bar line.

THE HIGHLANDS OF BANFFSHIRE. Strathspey. By Cap<sup>t</sup> Fraser.

Three systems of musical notation for the strathspey 'The Highlands of Banffshire'. Each system consists of a grand staff with a treble and bass clef. The key signature is one flat (B-flat), and the time signature is common time (C). The melody is written in the treble clef, and the accompaniment is in the bass clef. The first system has 8 measures, the second has 8 measures, and the third has 8 measures, ending with a double bar line. The third system includes triplets marked with a '3' over the notes.



PAUL WALLACE.

Reel.

By Jos. Lowe.

Three systems of musical notation for the 'Paul Wallace' Reel. Each system consists of a grand staff with a treble and bass clef. The key signature is one flat (B-flat), and the time signature is common time (C). The first system has 8 measures, the second has 8 measures, and the third has 8 measures. The melody is in the treble clef, and the bass clef provides harmonic support with chords and single notes.

NORTH PORT.

Strathspey.

By Robt Lowe.

Three systems of musical notation for the 'North Port' Strathspey. Each system consists of a grand staff with a treble and bass clef. The key signature is one flat (B-flat), and the time signature is common time (C). The first system has 8 measures, the second has 8 measures, and the third has 8 measures. The melody is in the treble clef, and the bass clef provides harmonic support. The second and third systems feature triplets (marked with a '3') in the treble clef.



## I'LL GANG NAE MAIR TO YON TOUN.

Reel.

Two systems of piano accompaniment for a reel. The first system begins with a forte (f) dynamic marking. The music is in G major (one flat) and 2/4 time. The first system consists of two staves, and the second system also consists of two staves. The melody is in the right hand, and the bass line is in the left hand.

## LORD MOIRA.

Strathspey

Five systems of piano accompaniment for a strathspey. The music is in G major (one flat) and 2/4 time. The first system begins with a forte (f) dynamic marking. The melody is in the right hand, and the bass line is in the left hand. The score includes various musical notations such as slurs, ties, and triplets (indicated by a '3' over the notes).



## THE ANTIQUARY.

Reel.

By Jos. Lowe.

Three systems of musical notation for the reel 'THE ANTIQUARY'. Each system consists of a grand staff with a treble clef and a bass clef. The key signature is one flat (B-flat), and the time signature is common time (C). The first system has a repeat sign at the end. The second system has an 'A' marking above the final measure of the treble staff. The third system also has a repeat sign at the end.

## EDIE OCHILTREE.

Strathspey.

By Jos. Lowe.

Four systems of musical notation for the strathspey 'EDIE OCHILTREE'. Each system consists of a grand staff with a treble clef and a bass clef. The key signature is one flat (B-flat), and the time signature is common time (C). The first system has a repeat sign at the end. The second system has a repeat sign at the end. The third system has a repeat sign at the end. The fourth system has a repeat sign at the end and includes triplets marked with a '3' above the notes.



## PRINCE ALFRED'S.

Reel.

By Jos. Lowe.

Three systems of piano accompaniment for the piece 'Prince Alfred's Reel'. Each system consists of a grand staff with a treble and bass clef. The key signature is one flat (B-flat), and the time signature is common time (C). The music features a mix of eighth and sixteenth notes, with some triplets and slurs. The first system ends with a repeat sign. The second system has a 'v' marking under a note in the bass staff. The third system also ends with a repeat sign.

## BALMORAL BRIDGE.

Strathspey.

By Jos. Lowe.

Four systems of piano accompaniment for the piece 'Balmoral Bridge'. Each system consists of a grand staff with a treble and bass clef. The key signature is one flat (B-flat), and the time signature is common time (C). The music is more complex than the first piece, featuring many triplets, slurs, and ties. The first system has a repeat sign. The second system has a repeat sign and a 'v' marking. The third system has a 'ff' (fortissimo) marking. The fourth system has several triplet markings (3) and ends with a repeat sign.



## MISS GIBSON.

## Reel.

The musical score for "MISS GIBSON. Reel." consists of three systems of piano accompaniment. Each system is written for piano (p) in G major (one sharp) and 2/4 time. The first system has a treble clef with a key signature of one sharp and a common time signature 'C'. The melody is in the right hand, and the bass line is in the left hand. The second system continues the melody and bass line. The third system concludes the piece with a final cadence. The notation includes various musical symbols such as notes, rests, and bar lines.

## FRANK WALKER.

## Strathspey.

The musical score for "FRANK WALKER. Strathspey." consists of three systems of piano accompaniment. Each system is written for piano (p) in G major (one sharp) and 2/4 time. The first system has a treble clef with a key signature of one sharp and a common time signature 'C'. The melody is in the right hand, and the bass line is in the left hand. The second system continues the melody and bass line. The third system concludes the piece with a final cadence. The notation includes various musical symbols such as notes, rests, and bar lines.



SELECTION OF JIGS  
As Danced at  
HER MAJESTY'S BALLS  
AT  
BALMORAL.

SIR ROGER DE COVERLY.

Country Dance.

Three systems of musical notation for the Country Dance 'Sir Roger de Coverly'. Each system consists of a grand staff with a treble and bass clef, a key signature of one sharp (F#), and a time signature of 9/8. The first system contains four measures. The second system contains four measures, with a forte dynamic marking 'fz' and an accent mark '^' above the final measure. The third system contains four measures, ending with a repeat sign and a forte dynamic marking 'f'.

DROPS OF BRANDY.

Irish Jig.

Three systems of musical notation for the Irish Jig 'Drops of Brandy'. Each system consists of a grand staff with a treble and bass clef, a key signature of one sharp (F#), and a time signature of 9/8. The first system contains four measures, with a forte dynamic marking 'fz' above the third measure. The second system contains four measures. The third system contains four measures, ending with a repeat sign.



## THE HAY-MAKERS JIG.

Country Dance.



## GILLAN A DROVER.

Highland Jig.

Musical notation for 'GILLAN A DROVER.' in G major and 6/8 time. The piece consists of six systems of piano accompaniment. Each system has two staves: the right staff contains a melody with eighth and sixteenth notes, and the left staff contains a bass line with chords. The notation includes repeat signs and a final double bar line at the end of the sixth system.



## THE ORIGINAL COUNTRY BUMPKIN.

THE ORIGINAL COUNTRY BUMPKIN. is a piano piece in G major and 6/8 time. It consists of five systems of music, each with a treble and bass staff joined by a brace. The melody is primarily in the treble staff, featuring eighth and sixteenth notes, while the bass staff provides a harmonic accompaniment with chords and single notes. The piece concludes with a double bar line and repeat dots.

## THE HEIGHTS OF ALMA.

Reel

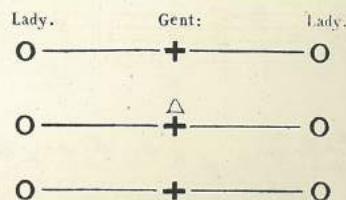
By Jos. Lowe.

THE HEIGHTS OF ALMA. is a piano piece in G major and common time (C). It consists of two systems of music, each with a treble and bass staff joined by a brace. The melody is in the treble staff, characterized by beamed eighth and sixteenth notes, giving it a lively, reel-like feel. The bass staff provides a steady accompaniment with chords. The piece ends with a double bar line and repeat dots.



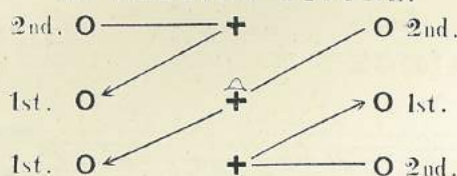
The original Country Bumpkin is a genuine old Scotch Dance which was very much in fashion amongst our Nobility prior to, and during the reign of George the Second, it is danced by six Ladies and three Gentlemen standing in lines across the Room, each Gentleman between his two partners, the Gentleman in the centre line wearing a cocked Hat to distinguish him as the Bumpkin, as shown by the figure below

POSITION OF DANCERS.



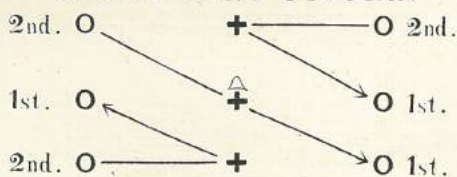
- 1st. All the three lines advance to the top of the Room with the common Strathspey step (8 bars) all turn round and return to places in the same way (8 bars)
- 2nd. Each Gentleman sets to, and turns two Ladies (8 bars) he then makes a Reel of three with the Ladies he turned, as the figure below directs, and finish in places (16 bars).

1st. REELING FIGURE.



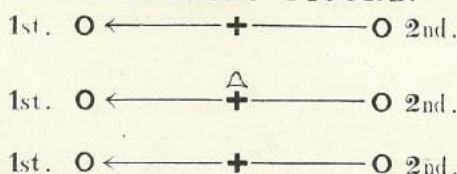
- 3rd. All the lines advance to the top of the Room and back again as before, each then set, turn, and Reel, as the figure below directs

2nd. REELING FIGURE.



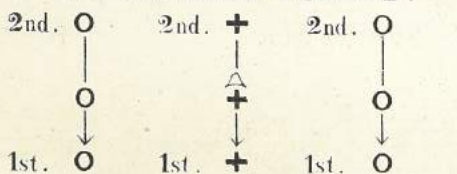
- 4th. All up the Room and back again as before, set, turn, and Reel, as the figure below directs

3rd. REELING FIGURE.



- 5th. All up the Room and back again as before, set, turn, and Reel, as the figure below directs

4th. REELING FIGURE.



In finishing this Figure the rear line comes into the centre, and the centre line goes to their place, and in passing the last time, the first Bumpkin crowns the Gentleman who was in the rear line with the cocked Hat, and he now becomes the Bumpkin, the whole of the figures are then repeated exactly in the same way with the new Bumpkin in the centre, after which those forming the front line come into the centre, and the centre line takes their place, the Gentleman who was in the front line now gets on the cocked Hat, and becomes the Bumpkin, all the figure are again repeated exactly in the same way, after the figures had been repeated three times it was common for other three Gentlemen to step in and form three Reels of Four across the Room, and dance three Foursome Reels. —

This good old lively Dance is now almost entirely forgotten, it requires more skill and perhaps better dancing than the Beaus and Belles of our present Ball rooms seem to care for, it is however a very exhilarating lively Dance and only requires to be known to be fully appreciated.



## CRATHIE LASSES.

Jig

By Jos. Lowe.

Two systems of musical notation for the piece 'Crathie Lasses'. Each system consists of a grand staff with a treble and bass clef. The key signature is one sharp (F#) and the time signature is 9/8. The first system begins with a forte 'f' dynamic marking. The music features a mix of eighth and sixteenth notes in the treble, with block chords and some single notes in the bass.

## TEVIOT BRIDGE.

Jig.

Three systems of musical notation for the piece 'Teviot Bridge'. Each system consists of a grand staff with a treble and bass clef. The key signature is one sharp (F#) and the time signature is 6/8. The music is characterized by a continuous eighth-note melody in the treble and a bass line of mostly block chords. The piece concludes with a double bar line.