

# PERINews

No: 641 February 2024

## **PIRBRIGHT VILLAGE PRIMARY SCHOOL New Science Lab!**

In our fast changing world, an understanding of science is more important than ever. So the new Science Lab at Pirbright Village Primary School has the potential to make a huge difference to all of our children for many years to come. With support from the Learning Partners Trust, the lab is ready for action, and the school are now looking for help to equip it with everything from tables to thermometers, benches to beakers, as well as pipettes, measuring equipment, weights, trays, bulbs, and so much more. With furniture and storage we are looking at around £30,000 to fully kit out the space, so every penny counts!

If you would like to contribute to this wonderful facility for our children, or if you work for a company that might like to support our project, then please contact the school office. Email: Shelley Fox

[info@pirbright.surrey.sch.uk](mailto:info@pirbright.surrey.sch.uk)

Telephone: 01483 473884

To find out more about this exciting project for our children's future, go to [www.pirbrightvillageprimaryschool.com/the-new-science-lab-2024/](http://www.pirbrightvillageprimaryschool.com/the-new-science-lab-2024/),



## **Fox Corner Community Wildlife Area Vacancy for Finance Officer**

Is caring for the environment important to you? Would you be competent with handling the straightforward finances for a small charity? Would you like to join a small friendly Management Team and do something special for your community?

Please phone Catherine Cobley on 07947 032210 to find out more!

**2024 is a Leap Year.  
Happy Birthday to all  
Leaplings!**

## **Banner image**

I hope you like our new look front page banner. The aim is to use a different image each month, reflecting our village through the seasons and community events. If you have a photo or artwork that you would like to see on our front page, please send it as a high resolution jpeg to the Editor at [julia.douetil@gmail.com](mailto:julia.douetil@gmail.com)

This month's banner image  
Woods in Mill Lane by the Editor

### How will you show your love this Valentine's Day?

Valentine's Day is an opportunity to show our love to those close to us. But how can we go beyond flowers and a card? Jesus says: *'A new command I give you: Love one another. As I have loved you, so you must love one another'* (John 13:34). How can we show love like Jesus' in our everyday relationships — to our partner, children, neighbours or work colleagues?

**Listening** We can listen to others, just as Jesus did. He asked questions of people and waited for them to process their answer. According to James, *'everyone should be quick to listen, slow to speak and slow to become angry'* (James 1:19). How well do we listen to others? Do we find ourselves already thinking of what we

want to say before they've finished speaking? Listening takes time; you can't rush it!

**Touching** Jesus reached out to touch the untouchables in his world, including lepers, the sick and children. This was completely out of character for rabbis of his day. One survey has suggested that we all need at least 8-10 meaningful touches a day to maintain emotional health! A warm handshake, touch on the arm or hug can be of real value. Of course, it should be appropriate touch – helpful for the other person, not just for ourselves.

**Speaking** Jesus' conversation was always full of grace and truth (John 1:14). Do we speak words of *grace*, by offering comfort, giving encouragement or expressing care and concern? However, we should also be ready to speak words of *truth*, in asking for forgiveness, seeking reconciliation or addressing conflict. As Paul urges us, don't avoid: *'speaking the truth in love'*.

Where is the challenge for us in expressing love this Valentine's Day?

*Rev Paul Hardingham (Parish Pump) .*



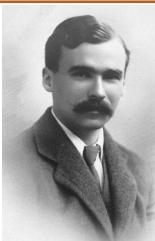
### CUNNINGHAM HOUSE

Cunningham House was initially built for local older people to downsize to, when their home became a challenge to manage. More recently the majority of our residents have moved quite a distance to be nearer to their relatives who live locally to Pirbright. Our two most recent residents, one who is local, the other having moved from Falmouth in Cornwall, were amazed to discover that they knew each other in their school days, being in the same class at Woking Grammar School for Girls. Both remembered well the walk to the hockey field which passed by the boys Grammar School, where the boys just happened to be down at the perimeter fence when they walked by!



### PIRBRIGHT HISTORIANS

Last month I wrote how Bullswater Common was used as a training ground for army recruits in 1914. One of those was George Butterworth (pictured), a budding composer of classical music with a strong English flavour. His best known composition is 'A Shropshire Lad', but one of his other songs is particularly poignant. "The Lads in their Hundreds", refers to young men arriving at a country fair, before leaving for the Second Boer War. Foreseeing the impending death of some of them, the song refers to "the lads who will never be old". Tragically George himself was killed during the battle of the Somme in August 1916, aged just 31, and he himself had become one of "the lads who will never be old".



The only physical traces of the Bullswater Common camp that can be seen today are some slight depressions in the ground, arranged in a straight line. In 1914 they were latrine pits. This is just one of the stories on the Fox Corner history website [www.foxcornerhistory.com](http://www.foxcornerhistory.com)

**Richard Hartley**

### PIRBRIGHT VILLAGE FAIR

June 8th



### ARE YOU FEELING CRAFTY?

This year's theme is the Paris Olympics and we would like all the local groups and societies to be represented in the exhibition on the little green. It is a great opportunity to promote YOUR group.

The entry can be anything to do with Paris or the Olympics so you have a wide range of subjects to choose from. Get your creative juices flowing and start thinking about what spectacular installation you and your friends could create.

And remember if you would like a stall at the fair or can help us on the day with the many tasks that make the fair run smoothly please get in touch, this is your fair and we can't do it without you! Please contact us at [pirbrightvillagefair@gmail.com](mailto:pirbrightvillagefair@gmail.com)

### PIRBRIGHT HORTICULTURAL SOCIETY

Our February meeting is on Tuesday 13th at 7.30pm in the Clubroom of Lord Pirbright's Hall. Our speaker, Roy Champion will talk on 'Hedgelaying'.

Subscriptions are now due, £20 for an individual, or £25 for a family membership.

Payments can be made to Julian Didyk by cash or cheque to Pirbright Horticultural Society or by card payment at our meetings.

Contact Julian on [juliandidyk@sky.com](mailto:juliandidyk@sky.com) or 07799207059. We depend on your support to keep our society active as it has been for nearly 100 years! We welcome new members from Pirbright and surrounding villages. *Philip Barralet*

**Shadow Councillor** The Council is happy to announce the appointment of Mr Keith Rowe as Shadow Councillor. Keith lives at Fox Corner with his family and has lived in the parish for 25 years. He is interested in local issues and is keen to do his best to help his community.

**Lord Pirbright's Hall** The LPH Trustees are pleased to announce the appointment of Mr Daniel Ward as Caretaker. Dan takes over from Mark Tidy and the Trustees wish to thank Mark for his help and wish him all the best for the future.

### **Community Sports Pavilion**

A reminder that the new community pavilion is available to hire for private functions; birthdays, family get-togethers, yoga classes. It has a fully operational kitchen, large entertainment space, private parking and a wonderful view of the Green. Please contact Catherine at [lph@pirbright-pc.gov.uk](mailto:lph@pirbright-pc.gov.uk) 07494 485056

**Recycling** The Trustees would also like to remind parishioners that Guildford Borough Council have taken the decision to remove the recycling bins at the Hall. Notices of alternative centres were posted on the bins and are on the PPC website. Slyfield will be the closest site for most of us and the Trustees would appeal against discarding any recycling at the Hall as this will only result in a cost to the whole community.

**Playground** Further safety surfacing has been replaced in the playground and thanks go to GBC for a 50% grant towards costs. This spongy surfacing replaces the worn tiles that have come to the end of their life. The new surfacing is expensive and laying it around the horse and climbing frame amounted to over £6,000 but the playground is so widely used by so many that the Council hope Parishioners will agree it is worth the investment to maintain it for generations to come.



**Village Phone Box** The phone box has been lovingly looked after by the Eason family for many years but the Council are now looking for another family to take it on. It requires careful painting once a year and it is currently a magazine and book swap, but the Council would consider a different community use if you have an idea? a fish tank or a communal changing room, or something more sensible? Please contact the Clerk, Helen Myers.

## COMMUNITY GROUPS

### ROYAL BRITISH LEGION

Our meeting is on Monday, 12th February at 8pm at the Fox Inn, Fox Corner so if you would like to join us please just turn up. 01252 404276 *Anne Hawkins*

### PIRBRIGHT WI

Enjoy a talk on *Hearing Dogs* by Irene Rich, on Tuesday February 20 at 7pm in the Club Room in Lord Pirbright's Hall. Visitors are always welcome.

**The WI serve coffee & tea** with biscuits on Thursday mornings 10am to 11.15am. When you pop into the **Pirbright Country Market** why not visit us?

*Irene Dredge 01483 233279 or email [iredredge@outlook.com](mailto:iredredge@outlook.com)*

### PIRBRIGHT COUNTRY MARKET

*"If we had no winter,  
spring would not be so pleasant"*

At Lord Pirbright's Hall every Thursday 10am to 11.15am, for home made cakes, savouries, preserves, plants and crafts.

### CRAFT, COFFEE AND CHAT

in the Church Room, St Michael's Church on 27th February 10am-noon. Work on your own project in sociable company.

### PIRBRIGHT TWINNING ASSOCIATION

#### **Wine tasting with Majestic Wines.**

Thursday 29 February, 8.00pm at Lord Pirbright's Hall. Majestic Wine's specialist will guide us through an evening of French regional wine tasting, with a selection of red, white, rose and sparkling wines on offer, and a variety of French cheeses.

Existing and new members welcome.

Tickets £18.00 per person.

**Crêpe Supper** - Saturday 09 March at 6.30pm at Lord Pirbright's Hall.

Tickets: payment for both events please via bank transfer (BACS) to: Pirbright Twinning Association Sort code 30-99-80, A/C No. 01174367.

Payment enquiries to George Lane via email to [treasurer.twinning@gmail.com](mailto:treasurer.twinning@gmail.com)

### RAWLINS CLUB

On Friday 9th Feb, 2.00 - 4.00pm in Lord Pirbright's Hall, the talk will be "Wildlife Through a Lens" by David Fettes

*Denise Granger 01483 472070*

### PIRBRIGHT VILLAGE PRIMARY SCHOOL Clerk to the Governors

Our Governing Body are looking to appoint a pro-active, efficient Clerk. As part of the role you will provide administrative support and advice to the Governing Body, draft agendas and take minutes of meetings. You will help the Chair to ensure that the annual cycle of governance is carried out. This is a paid role, approx 100 hours a year, with the flexibility for overtime if needed. For more information contact Julia Douetil at [Chair@pirbright.surrey.sch.uk](mailto:Chair@pirbright.surrey.sch.uk)

### 1st BROOKWOOD SCOUTS

Thanks to all the residents who supported our Christmas Tree recycling, and Peter Goold for the van, and all the parents and young people who got up very early on Sunday morning to help. The £1000 raised will help to buy our own Mess tent for camps and adventures we have planned this year..

1st Brookwood Scouts is a thriving local Scout group with sessions every Friday in the Memorial Hall in Brookwood for local children aged 6-14. Our Beavers (aged 6-8) & Cub (aged 8-10) groups are at full capacity & we are actively looking out for new adults to help run the sessions. You don't need to have a background in Scouting and there are ways to be involved with whatever time you can spare.

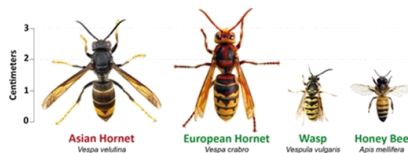
If you'd like to make a difference in your local community and help shape young people's lives please contact Joe for more information at [gslbrookwood@gmail.com](mailto:gslbrookwood@gmail.com)



### ASIAN HORNETS ALERT!

Our pollinating insects, and especially honey bees, are under dire threat from a new invasive predator, the Asian Hornet. They established in Kent and are spreading. As if honey bees were not in enough trouble with varroa mite and climate change, Asian Hornets can kill an entire hive of honey bees in a single day.

Now is the time to look out for this new menace, and report them so that their nests can be located and destroyed. One nest of Asian Hornets in February can become 30 nests by the following year!



Report through the Asian Hornet Watch app or [www.bit.ly/asianhornetreport](http://www.bit.ly/asianhornetreport)

Asian Hornets are smaller than native European hornets, with a velvety black thorax, mainly black abdomen and distinctive yellow legs. Individuals are not aggressive to humans but nests are, so don't try to destroy the insects yourself and don't approach a nest. DO report any sightings just google Asian Hornet, or download the Asian Hornet Watch app. .

The honey bees will thank you!

### PIRBRIGHT TENNIS CLUB

<https://clubspark.lta.org.uk/PirbrightTennisClub>

[www.facebook.com/pirbrighttennisclub](http://www.facebook.com/pirbrighttennisclub)



Last month a useful ramp was created from the path outside the clubhouse on to the courts. This allows access to the courts much easier with a wheelchair or ball machine.

As members, you are also a member of LTA Advantage. There are advantages to this, which include entering the Wimbledon club ballot (next year only now), priority access to tickets for LTA events and more. For the full explanation visit the LTA Advantage website -- <https://www.lta.org.uk/advantage/>

David Greenland



## CALLING ALL HEATHLAND HABITAT HELPERS!

Surrey's lowland heaths are an internationally rare habitat, supporting specialised plants and wildlife. For it to survive, and for the rare flora and fauna to thrive, heathland needs specialist management and regular maintenance work needs to be carried out. Can you help protect the rare heathland habitat right on your doorstep? No



experience necessary, just enthusiasm to get stuck in! Volunteers need to be 16 or over, and all tasks are supported by trained leaders. To find out more, including working party dates, call 07974 864 295, e mail [heathlandproject@surreycc.gov.uk](mailto:heathlandproject@surreycc.gov.uk) or go to <https://pirbright-pc.gov.uk/news/calling-all-heathland-habitat-helpers-8-sep-2023>

## PIRBRIGHT CRICKET CLUB

The cricket club welcomes all abilities and all ages ...so dust off your kit and join us for Winter training which began at Winston Churchill school as early as January! Graeme Marks



## FEBRUARY GARDENING TIPS from Wellie

Cut autumn raspberry canes to ground level ensuring you leave no stumps that could harbour disease. Prune out a quarter of blackcurrant older growth at ground level. Apply a general purpose fertiliser to tree, bush and cane fruit and mulch with well rotted manure or garden compost. Force rhubarb for early pickings. Start chitting your potatoes. Start sowing some of your chosen veg seeds indoors, such as broad beans, tomatoes, basil, kale and chilies.

Clean out existing bird boxes or put up new boxes, continue to provide food and keep bird baths topped up with fresh water. In late February cut back ornamental grasses and other perennials left for winter interest. Cut away old foliage from epimediums, before the spring flowers start to appear. Cut back hard shrubs such as Cornus and Salix grown for winter coloured stems. Cut back late flowering (group 3) Clematis such as *Clematis viticella*, *C. orientalis* and *C. "Jackmannii"* to a low pair of strong buds. Prune late summer flowering shrubs such as buddleia, lavatera and fuschia hard.

Prune winter flowering shrubs such as mahonia, winter jasmine and heathers, once they have finished flowering. Topdress beds and borders with a balanced fertiliser.



## PIRBRIGHT COMMUNITY CALENDAR FEBRUARY 2024

1	Thur	2:30pm	Scrabble at Cunningham House
4	Sun	9:30am	Family Service with Church Band, St Michael's
7	Tue	7:30pm	Alpha Course session 4, United Reform Church, Wyke
9	Fri	2:00pm	Rawlins Club, 'Wildlife Through a Lens', LPH
11	Sun	9:30am	Holy Communion, St Michael's Church
12	Mon	8:00pm	Royal British Legion meeting, The Fox Inn at Fox Corner
13	Tue	7:30pm	Horticultural Society, 'Hedge Laying', LPH
14	Wed	2:30pm	Craft Circle at Cunningham House
18	Sun	9:30am	Holy Communion, St Michael's Church
20	Tue	10:15am 7:00pm	Mid week communion with café club, St Michael's Pirbright WI, 'Hearing Dogs', LPH
21	Wed	7:30pm	Alpha Course session 5, St Mark's Church Hall, Wyke
25	Sun	10:00am	Church on the Green, LPH
27	Tue	10:00am	Craft Coffee and Chat in the Church Room
28	Wed	7:30pm	Alpha Course session 6, St Mark's Church Hall, Wyke
29	Thur	8:00pm	LEAP YEAR DAY Twinning Association, French wine tasting, LPH



### PIRBRIGHT SINGERS Rutter's Requiem

The Pirbright Singers are excited to present John Rutter's Requiem on Saturday, 23rd March at St Michael and All Angels Church, Pirbright. More details in the next PeriNews and look out locally in social media and on posters for ticket information.



**PeriNews is produced by and delivered by volunteers on behalf of St Michael and All Angels Church and Pirbright Parish Council,**

**Editor:** Julia Douetil, [julia.douetil@gmail.com](mailto:julia.douetil@gmail.com)  
Church Cottage, Church Lane, Pirbright, GU24 0JJ.



### St Michael and All Angels Church

**Vicar:** Rev George Watkinson  
[georgealbionwatkinson@gmail.com](mailto:georgealbionwatkinson@gmail.com)  
07711944327

**Admin** [admin@pirbrightchurch.org.uk](mailto:admin@pirbrightchurch.org.uk)  
07984323709

**Website:** [www.pirbrightchurch.org.uk](http://www.pirbrightchurch.org.uk)

### Pirbright Parish Council

**Chair:** Steve Fidgett  
[sfidgett@pirbright-pc.gov.uk](mailto:sfidgett@pirbright-pc.gov.uk)  
**Parish Clerk:** Helen Myers,  
[clerk@pirbright-pc.gov.uk](mailto:clerk@pirbright-pc.gov.uk) 07485 411214  
**Parish website** [www.pirbright-pc.gov.uk](http://www.pirbright-pc.gov.uk)  
**Lord Pirbright's Hall** Catherine Loots  
07494 485056