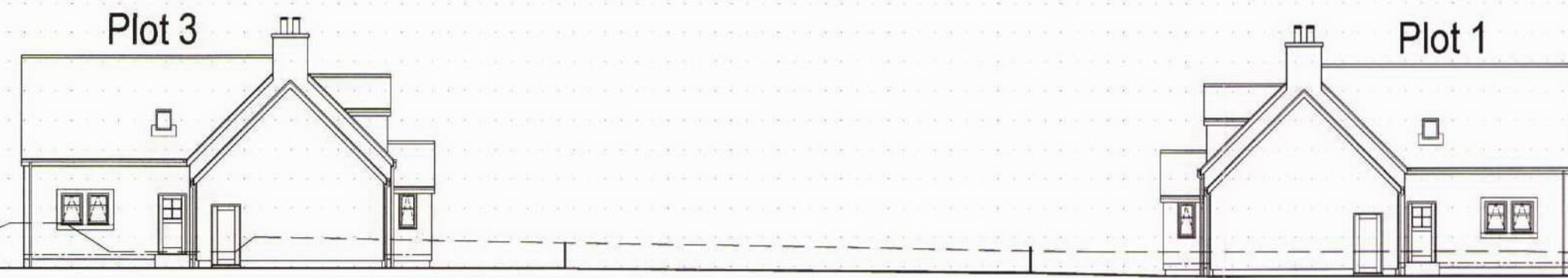


+183.000m  
+182.000m  
+181.000m  
+180.000m  
+179.000m  
+178.000m  
+177.000m  
+176.000m  
+175.000m  
+174.000m  
+173.000m  
+172.000m  
+171.000m

A~A



Existing Ground Level

+183.000m  
+182.000m  
+181.000m  
+180.000m  
+179.000m  
+178.000m  
+177.000m  
+176.000m  
+175.000m  
+174.000m  
+173.000m  
+172.000m  
+171.000m

+183.000m  
+182.000m  
+181.000m  
+180.000m  
+179.000m  
+178.000m  
+177.000m  
+176.000m  
+175.000m  
+174.000m  
+173.000m  
+172.000m  
+171.000m  
+170.000m  
+169.000m  
+168.000m  
+167.000m  
+166.000m

B~B

Plot 4 Driveway



Existing Ground Level

+183.000m  
+182.000m  
+181.000m  
+180.000m  
+179.000m  
+178.000m  
+177.000m  
+176.000m  
+175.000m  
+174.000m  
+173.000m  
+172.000m  
+171.000m  
+170.000m  
+169.000m  
+168.000m  
+167.000m  
+166.000m

Town & Country Planning  
(Scotland) Act, 1997  
as amended

**APPROVED**

11.03.2011

**Development Management  
Environmental Services  
The Moray Council**



A	REVISED HOUSETYPES FOR PLANNING	GM	06.2010.
Rev			Date

**Gordon Scott  
Architectural Services Ltd**  
Langavat House  
Old Skene Road  
Westhill  
Aberdeen  
AB32 6UB

Tel: 01224 744106  
Tel: 01467 626828  
Fax: 01467 626822

TITLE:  
Site Sections For Plots 1-3  
Minduff  
Drybridge  
Buckie

FOR:  
Milne Property Developments

**AMENDED PLAN**

drawn by: G. Mathieson	drawing no:
checked by:	GS0130 - 008
date: 10.2009	
scale: 1:200	rev: A