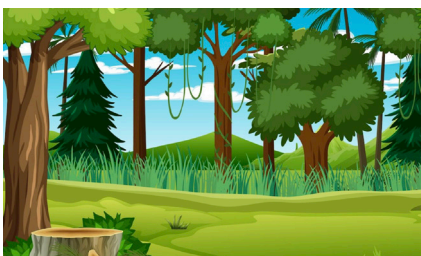


BARNWELL PARISH COUNCIL

NEWS UPDATE

3 SEPTEMBER 2022

BARNWELL COUNTRY PARK AWARD



Barnwell Country Park has received special status at the UK's Favourite Park 2022 awards. 364 parks were nominated for the prestigious awards and over 30,000 votes were cast.

The parks finishing in the top 20% of the public vote have achieved the special "Local Favorite" status, reflecting the importance of the park to the local community. There were only 5 parks in the whole of the East Midlands region who received this special award and we should be rightly proud that Barnwell Country Park was in the top 5, and one of only two in Northamptonshire.

HRH The Duke of Cambridge, is the President of Fields in Trust, which was established in 1925 and ran the competition. He remarked that **"Access to parks and green spaces can help us to stay physically and mentally well, reduce social isolation and instill pride in our local communities, Whether it is playing sport, socialising with friends or aking a moment for quiet reflection, parks and green spaces quite simply make us happier"**

Echoing this sentiment, in addition to Barnwell Country Park, we have identified a number of other green spaces within the parish which have been adopted in our Barnwell Neighbourhood Plan. The plan is in its final stages before being adopted through the formal referendum process.

2022 BARNWELL CARBON FOOTPRINT

Last week we highlighted a national tool that has been developed to provide insight into the carbon footprint of our local areas. Here is the table of Thrapston Ward and you can see where Barnwell sits within this. The new Environmental Group will be looking at some practical ways we can reduce our footprint.

	Households	Per household consumption	Total parish consumption	Total parish territorial
1 Thrapston	2,568	18.6	47,768	33,365
2 Brigstock	615	18.7	11,505	19,907
3 Warmington	339	30.7	10,402	13,439
4 Titchmarsh	242	23.4	5,669	16,831
5 Polebrook	182	26.5	4,816	5,843
6 Barnwell	177 (6th)	21.3 (8th)	3,766 (7th)	12,938 (6th)
7 Clopton	167	10.3	1,717	3,914
8 Lilford-cum-wigsthorpe	166	9.4	1,561	8,303
9 Lutton	147	12.0	1,762	3,460
10 Aldwincle	132	30.1	3,968	8,002
11 Lowick	126	26.3	3,310	11,829
12 Stoke Doyle	112	7.7	866	4,807
13 Wadenhoe	112	13.8	1,544	3,478
14 Thurning	89	13.3	1,181	2,076
15 Hemington	89	12.5	1,109	2,004
16 Twywell	83	20.2	1,673	13,399
17 Sudborough	80	29.4	2,353	5,807
18 Cotterstock	53	39.1	2,071	2,234



Driving is an essential part of our everyday lives, however, whilst many older drivers drive better than those younger, our driving ability can change as we grow older, and the Northamptonshire Safer Roads Alliance are running a number of Mature Driver Roadshows. These are aimed at those over 60 and will provide free advice on car adaptations, eyesight and the effects that medication may have on your driving. There are very limited spaces available on the next course.

More details can be found on the website www.northampton-iam.org.uk

The Parish Council meets bi-monthly, usually on the third Tuesday of the month, at the Village Hall at 7pm. The public are welcome to attend. Minutes of the meetings can be found on the parish council website: www.barnwellparishcouncil.org.uk

Parish Councillors:

David Brown (Chair). Jeanne DeBock. Catriona Forrest, Heather Hanlon, Tim Herring, Chris Soans, Graham Wise

For items requiring attention of the Council, please contact Nicki Phillips, the Parish Clerk: barnwellparishclerk@gmail.com